

[illegible][illegible]

[illegible]

FLOOR PLANS

3400 GVF 0-22 C SBI



3600 GVF 0-22 C SBID



3600 GVF 0-22 C SBI



*Turis berda urutabito

Grand Villa

MAIN POWER PLANT:
 SP - 3000 kW, 1700 RPM, 100%
 DR - 3000 kW, 1700 RPM, 100%
 CR - 3000 kW, 1700 RPM, 100%

2900 GVF SBI FLOOR PLAN



2900 GVF RB FLOOR PLAN



3000 GVF SB FLOOR PLAN



3300 GVF SBI FLOOR PLAN



* Twin beds available

3300 GVF RB FLOOR PLAN



BASIC FLOOR PLANS:
SB - SIDE BATH, TWIN BEDS
RB - SIDE BATH, ISLAND BED
SBI - SIDE BATH, TWIN BEDS, DINETTE

3600 U225/U240 SBID

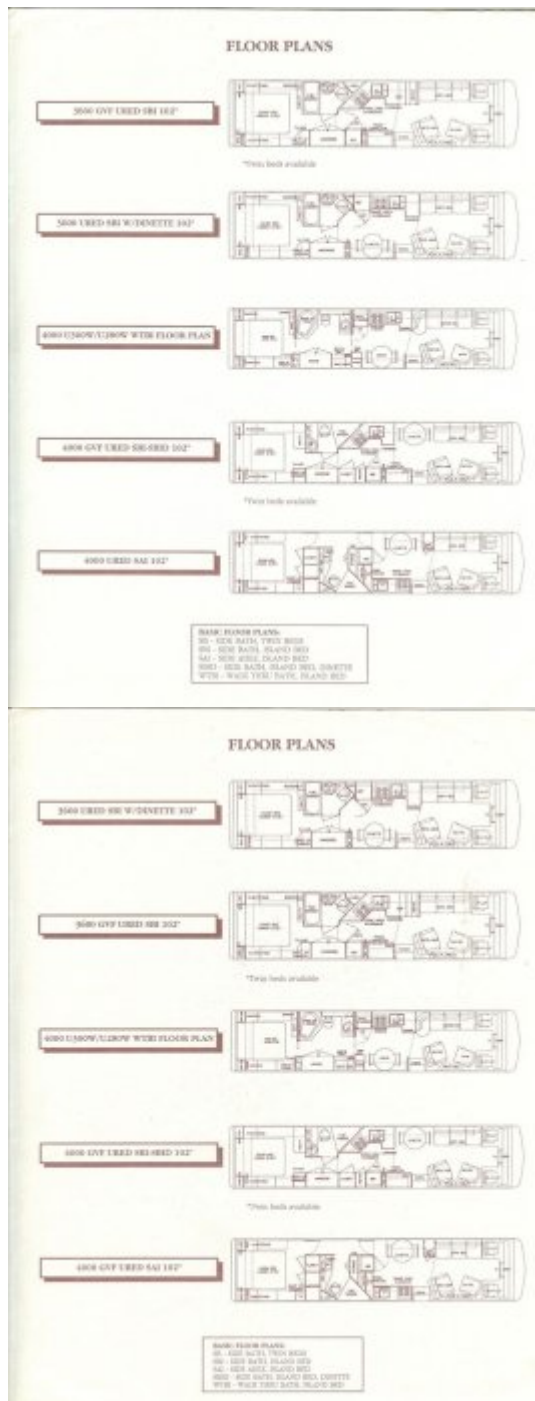


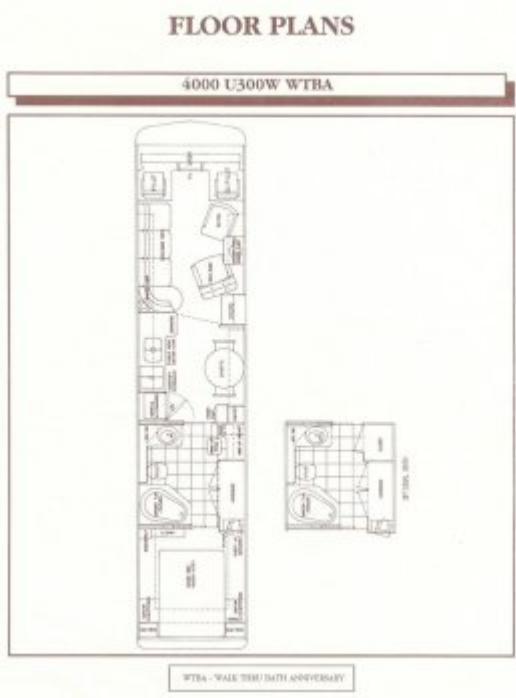
3600 U225/U240 SBI



* Twin beds available

BASIC FLOOR PLANS:
SB - SIDE BATH, TWIN BEDS
SBI - SIDE BATH, ISLAND BED
SBID - SIDE BATH, ISLAND BED, DINETTE
SBI - SIDE BATH, TWIN BEDS, DINETTE





Specifications

1992 Silver Anniversary Grand Villa U300

Models

MODEL NO	WHEEL BASE	RETAIL
Silver Anniversary 4000	276"	\$320,500
Model number denotes approx. length		
CODE	DESCRIPTION	
WTBA	WALK THRU BATH ANNIVERSARY	

Features

AUTOMOTIVE

- 148 gallon fuel tank
- 160 amp alternator
- 160 amp battery isolator
- 2" square receiver hitch
- 275/80R 225 PXZA Michelin tires
- (3) 200 Amp hour batteries
- 8 bag 100% air-ride suspension
- Air disk brakes
- Air hose for tire service

- Allison HT 746 transmission ATEC
- Clock in dash
- Cruise control
- DDA Silver 6V92TA DDEC 350 H.P.
- Dry air cleaner
- Dual electric wipers & washers
- Engine compartment light
- Engine coolant heater 110V
- Foretravel chassis 30,000 GVWR
- Full instrumentation
- Halogen headlights
- Heavy duty radiator, boiled construction
- Heavy steel bumpers with decorative fascia
- Jake Brake
- One piece Alcoa aluminum wheels
- Padded automotive-type dash with swing-up top for easy service
- Padded sun visors
- Power steering
- Racor® fuel filter
- Radiator water recovery system
- Transmission oil cooler
- Transmission retarder brake

LIVABILITY

- 1 1/2" block Styrofoam® insulation
- 20" Stereo TV in living area
- 40 channel CB radio
- 6-way electric driver seat base
- All wood drawers on full extension ball bearing glides
- AM/FM/cassette stereo in bedroom
- Automatic closet lights
- Built-in 13" color TV & VCR in bedroom
- Built-in vacuum cleaner
- Carpeted overhead cabinets
- Cedar lined wardrobe closet
- Corian® countertops in kitchen & bath
- Corian® lavatory bowl
- Corian® night stand tops
- Corian® recessed single bowl sink w/covers
- Corian® table w/chairs
- Deadbolt lock
- Decorative ceiling light
- Decorative tile in bath
- Designer sofa bed
- Deluxe carpet & pad
- Digital alarm clock in bedroom
- Dometic® AES ref/freezer/ice maker

- Electronic AM/FM/cassette w/seek
- Exterior cable TV hookup
- Eye level microwave/convection oven
- Fiberglass underskin
- Floor level night lights
- Florescent lighting throughout
- Full screen door
- Generator switch in bedroom & cockpit
- Large bath/shower & tub combination
- Large lighted vanity with mirror
- Motor-aid water heater / electronic ignition
- One piece fiberglass roof and sidewalls
- Porch & entry lights with touch switch
- Power ceiling vent in bath area
- Real wood paneling
- Recessed 2 burner Gaggenau cooktop
- Recliner & swivel chair
- Reclining pilot & co-pilot seats
- Sealand toilet w/Sprayer hose
- Slide-out console table
- Thermostatically controlled fresh air ventilator
- Three point compartment door latches
- Trash compactor
- TV antenna with booster
- Wall mounted clock
- Wardrobe dressing mirrors
- Water pump switch in bath & kitchen
- Water purifier

ELECTRICAL

- 110 volt automatic changeover
- 110 voltmeter & polarity meter
- 1500 watt inverter
- 50 Amp. shoreline
- 7.5 K.W. generator/diesel fueled
- 75 Amp. converter-charger
- Master battery disconnect switch
- Trailer wiring

SAFETY

- Back-up lights
- Back-up monitor
- Docking lights
- Emergency exit side windows
- Emergency flashers
- Entry door hand rail

- Fire extinguisher
- Halogen fog lights
- Large outside remote mirrors with wide angle vision, heated
- LP gas leak detector
- Park lights
- Retractable seat belts
- Self-canceling directional signal lights
- Smoke detector
- Steel cage with aluminum roof frame
- Tinted safety glass
- Warning triangle reflector kit

HEATING/COOLING

- 17,250 BTU auto/AC
- 35,000 BTU auto heat/def.
- (2)-35,000 BTU ducted AC with heat strips and wall thermostats
- (2)-35,000 BTU ducted furnaces with electronic ignition

CONVENIENCE

- 110 gal. gray water capacity
- 54 gal. black water capacity
- 102 gallon water capacity
- 2 gallon pre-charged water accumulator
- 77" interior height
- 12V air compressor
- 270 lb. LPG tank
- Air leveling system
- Antenna warning
- Automatic air step
- Computer screen systems monitor
- Computerized air leveling system
- Conveniently located dump hose & valves
- Door bell
- Dual Hadley air horns
- Exterior 110v outlet
- Glove box
- Large bus type belly storage
- large interior storage
- Map lights for pilot & co-pilot
- Pilot & co-pilot ducted fan system
- Remote searchlight
- Roof mounted rack and ladder
- Safe
- Storage compartment lights
- Telephone jack

1992 Grande Villa U300

Models

	3600	3800	4000
Retail	\$300,000	\$307,500	\$315,500
Gross Vehicle Weight Rating	30,000	30,000	30,000
Gross Combined Vehicle Weight Rating	36,000	36,000	36,000
Wheel Base	228"	252"	276"
Rear Axle Ratio	3.07	3.07	3.07
Front axle GAWR	10,500	10,500	10,500
Rear axle GAWR	19,500	19,500	19,500
Model number denotes approx. length			
CODE	DESCRIPTION		
SB	SIDE BATH, TWIN BEDS		
SBI	SIDE BATH, ISLAND BED		
SAI	SIDE AISLE, ISLAND BED		
SBID	SIDE BATH, ISLAND BED, DINETTE		
WTBI	WALK THRU BATH, ISLAND BED		

Features

AUTOMOTIVE

- (3)-200 amp. hour batteries
- 148 gallon fuel tank
- 160 amp alternator
- 160 amp battery isolator
- 2" square hitch receiver
- 275/80R 22.5 PXZA Michelin tires
- 8 bag 100% air ride suspension
- Air disc brakes front and rear
- Air hose for tire service
- Allison HT 746 transmission ATEC
- Clock in dash
- Cruise control
- Dry air cleaner
- Dual electric wipers & washers
- Engine compartment light
- Engine coolant heater - 110v
- Foretravel chassis 30,000 GVWR
- Full instrumentation
- Halogen headlights
- Heavy duty radiator, bolted construction
- Heavy steel bumpers with decorative fascia

- Jake Brake
- One piece Alcoa aluminum wheels
- Padded automotive-type dash with swing-up top for easy service
- Padded sun visors
- Power steering
- Racor@fuel filter
- Radiator water recovery system
- Thermal Exhaust Blanket
- Transmission oil cooler

LIVABILITY

- 1 1/2" block Styrofoam insulation
- 20" Stereo TV in living area
- 40 channel CB radio
- 36x76 twin beds - SB
- 60 x 80 queen-size bed - SBI
- 4 burner cooktop with gas oven
- 6-way electric driver seat base
- All wood drawers on full extension ball bearing glides
- AM/FM/cassette stereo in bedroom
- Automatic closet lights
- Built-in 13" color TV & VCR in bedroom
- Built-in vacuum cleaner
- Carpeted overhead cabinets with lights
- Cedar lined wardrobe closet
- Corian countertops in kitchen & bath
- Corian table w/chairs -on 4000 SAI, SBI,& WTBI
- Corian lavatory bowl
- Curtains and sheers
- Deadbolt lock
- Decorative ceiling light on SAI & WTBI
- Deluxe carpet & pad
- Digital alarm clock in bedroom
- Dometic AES ref/freezer (SBI)
- Dometic AES ref/freezer/ice maker (SAI, WTBI, & 36' SBID)
- Electronic AM/FM/cassette w/ seek
- Exterior cable TV hookup
- Eye level microwave/convention oven
- Fiberglass underskin
- Floor level night lights
- Fluorescent lighting throughout
- Full screen door
- Generator switch in bedroom & cockpit
- Ice Maker (SBI only)
- Large bath/shower & tub combination
- Laundry bag on SAI model
- Lavatory drawer

- Lighted vanity with mirror
- Motor-aid water heater with electronic ignition
- One piece fiberglass roof and sidewalls
- Porch & entry lights with touch switch
- Power ceiling vent in bath area
- Real wood paneling
- Recessed double stainless steel sink with covers
- Recliner & swivel chair
- Reclining pilot & co-pilot seats
- Slide-out pantry (except SA! & WTBI)
- Slide-out console table
- Sofa Bed
- Thermostatically controlled fresh air ventilator
- Three-point compartment door latches
- Trash compactor (except on 3600 & 3800 dinette models)
- TV antenna with booster
- Wall mounted clock
- Wardrobe dressing mirrors
- Washer/Dryer plumbing on 4000 Series (Except WTBI)
- Water pump switch in bath & kitchen
- Water purifier

ELECTRICAL

- 110 volt automatic changeover
- 110 voltmeter & polarity meter
- 1500 watt inverter
- 50 Amp. shoreline
- 7.5 K.W. generator/diesel fueled
- 75 Amp. converter-charger
- Master battery disconnect switch
- Trailer wiring

SAFETY

- Back-up lights
- Back-up monitor
- Docking lights
- Emergency exit side windows
- Emergency flashers
- Entry door hand rail
- Fire extinguisher
- Halogen fog lights
- Large outside remote mirrors with wide angle vision, heated
- LP gas leak detector
- Park lights
- Retractable seat belts
- Self-canceling directional signal lights

- Smoke detector
- Steel cage with aluminum roof frame
- Tinted safety glass
- Warning triangle reflector kit

HEATING/COOLING

- 17,250 BTU auto/AC
- 35,000 BTU auto heat/def.
- (2)-13,500 BTU roof AC with heat strips and wall thermostats
- (2)-35,000 BTU ducted furnaces with electronic ignition (35,000 + 16,000 on 3600 Series)

CONVENIENCE

- 110 gal. gray water capacity
- 54 gal. black water capacity
- 102 gallon fresh water capacity
- 2 gallon pre-charged water accumulator tank
- 77" interior height
- 12v air compressor
- 270 lb. LPG tank
- Antenna warning
- Automatic air step
- Computer screen systems monitor
- Computerized air leveling system
- Conveniently located dump hose & valves
- Door bell
- Dual Hadley® air horns
- Exterior 110v outlet
- Glove box
- Large bus type belly storage
- Large interior storage
- Map lights for pilot & co-pilot
- Pilot & co-pilot ducted fan system
- Remote searchlight
- Roof mounted rack and ladder
- Safe
- Storage compartment lights
- Telephone jack

Options

Advanced Electronics Package	\$475
Audit 1150 Climatic Screen	\$475
Awning Package I	\$1665
Window awnings covering four windows	\$824
Patio awning	\$876

Awning Package I	\$1665
Two matching chairs	\$110
Awning Package II	\$1873
Window awnings covering five windows	\$1050
Patio awning	\$876
Two matching chairs	\$110
Awning Package III	\$2044
Window awnings covering six windows	\$1236
Patio awning	\$876
Two matching chairs	\$110
Sound Option	\$975
Compact Disc Player/Changer	\$975
Convenience Package	\$2316
LP connections for Bar-B-Que	\$94
100 lb. slide out freezer	\$1274
Solar battery charger	\$550
Modular Storage Cabinet	\$600
Deluxe Kitchen Package	\$478
Gourmet Spray faucet	\$120
Instant hot water dispenser	\$175
Blender	\$225
Luxury Package	\$1184
Parquet Flooring (kitchen only)	\$1032
Sealand china toilet	\$120
Leaded beveled glass insert for china cabinet door (SAI & WTB only)	\$100
Personalized entrance door lighted assist handle	\$35
Power Package	\$372
Power passenger seat	\$330
Cellular antenna	\$75
Washer / Dryer Package (4000 only)	\$2042
Washer / Dryer	\$2000
6 gallon 3-waywater heater	\$220

1992 Foretravel Grand Villa U280

Models

MODEL NO	WHEEL BASE	RETAIL
Foretravel Grand Villa 3600	228"	\$260,500
Foretravel Grand Villa 3800	252"	\$269,500
Foretravel Grand Villa 4000	276"	\$283,500

CODE	DESCRIPTION
SB	SIDE BATH, TWIN BEDS
SBI	SIDE BATH, ISLAND BED
SAI	SIDE AISLE, ISLAND BED
SBID	SIDE BATH, ISLAND BED, DINETTE

Features

AUTOMOTIVE

- (2)-200 amp. hour batteries
- 8 bag 100% air-ride suspension
- 148 gallon fuel tank
- 160 amp alternator
- 160 amp battery isolator
- 2" square receiver hitch
- 275/80R 223 PXZA Michelin tires
- Air disk brakes front and rear
- Air hose for tire service
- Allison MT647 transmission
- Clock in dash
- Cummins C8.3-300 H.P.
- Cruise control
- Dry air cleaner
- Dual electric wipers & washers
- Engine compartment light
- Engine coolant heater - 110v
- Foretravel chassis 28.000 GVWR
- Full instrumentation
- Halogen headlights
- Heavy duty radiator, bolted construction
- Heavy duty bumpers with decorative fascia
- One piece Alcoa* aluminum wheels
- Padded automotive-type dash with swing-up lop for easy service
- Padded sun visors
- Power steering
- Racor® fuel filter
- Radiator water recovery system
- Transmission oil cooler

LIVABILITY

- 1 1/2" block Styrofoam ® insulation
- 20" Stereo TV in living area
- 36x76 Twin beds - SB
- 4 burner cooktop with gas oven
- 40 channel CB radio

- 6-way electric driver scat base
- 60×80 queen-size bed - SBI
- All wood drawers on full extension ball bearing glides
- AM/FM/cassette stereo in bedroom
- Automatic closet lights
- Built-in 13' color TV & VCR in bedroom
- Built-in vacuum cleaner
- Carpeted overhead cabinets
- Cedar lined wardrobe closet
- Corian ® countertops in kitchen & bath
- Corian ® table w/chairs on 4000 SAI & SBID & WTBI
- Corian ® lavatory bowl
- Curtains and sheers
- Deadbolt lock
- Deluxe carpet & pad
- Digital alarm clock in bedroom
- Dometic® AES ref/freezer (SBI)
- Dometic® AES ref/freezer w/built-in icemaker (SAI, WTBI & SBID)
- Electronic AM/FM/cassette with seek & scan
- Exterior cable IV hookup
- Eye level microwave/convection oven
- Fiberglass underskin
- Floor level night lights
- Fluorescent lighting throughout
- Full screen door
- Generator switch in bedroom & cockpit
- Ice maker (except SAI & 36' SBID)
- Large bath/shower & tub combination
- Laundry bag on SAI model
- Lavatory drawer
- Lighted vanity with mirror
- Motor-aid water heater with electronic ignition
- One piece fiberglass roof and sidewalls
- Porch & entry lights with touch switch
- Power ceiling vent in bath area
- Real wood paneling
- Recessed double stainless steel sink with covers
- Recliner & swivel chair
- Reclining pilot & co-pilot scats
- Slide-out pantry (except SAI & WTBI)
- Slide-out console table
- Sofa bed
- Thermostatically controlled fresh air ventilator
- Three-point compartment door latches
- Trash compactor except on 3600 series dinette models
- TV antenna with booster
- Wall mount clock
- Wardrobe dressing mirrors

- Washer/dryer connections on 4000 series (except WTBI)
- Water pump switch in bath & kitchen
- Water purifier

ELECTRICAL

- 110 volt automatic changeover
- 110 voltmeter & polarity meter
- 50 Amp. shoreline
- 6.3 K.W. generator/LP. fuel
- 75 Amp. converter-charger
- Master battery disconnect switch
- Trailer wiring

SAFETY

- Back-up lights
- Back-up monitor
- Docking lights
- Emergency exit side windows
- Emergency flashers
- Entry door hand rail
- Fire extinguisher
- Halogen fog lights
- Large outside remote mirrors with wide angle vision, heated
- LP gas leak detector
- Park lights
- Retractable seat belts
- Self-canceling directional signal lights
- Smoke detector
- Steel cage with aluminum roof frame
- Tinted safety glass
- Warning triangle reflector kit

HEATING/COOLING

- 17,250 BTU auto/AC
- 35,000 BTU auto heat/def.
- (2)-13,500 BTU roof AC with heat strips and wall thermostats
- (2)-35,000 BTU ducted furnaces with electronic ignition (16,000 + 35,000 on 3600 series)

CONVENIENCE

- 110 gal. gray water capacity
- 54 gal. black water capacity
- 102 gallon water capacity
- 2 gallon pre-charged water accumulator
- 77" interior height
- 110 v air compressor

- 2701b. LPG tank
- Antenna warning
- Automatic air step
- Computer screen systems monitor
- Computerized Air leveling system
- Conveniently located dump hose & valves
- Door bell
- Dual Hadley® air horns
- Exterior 110v outlet
- Glove box
- Large bus type belly storage
- Large interior storage
- Map lights for pilot & co-pilot
- Pilot & co-pilot ducted fan system
- Remote searchlight
- Roof mounted rack and ladder
- Safe
- Storage compartment lights
- Telephone jack

1992 Grand Villa U240 / U225

Models

MODEL NO	WHEEL BASE	RETAIL
Grand Villa 3600 U225	228"	\$185,000
Grand Villa 3600 U240	228"	\$195,000
U225 Cummins B5.9 230HP		
U240 Caterpillar 3208 DIT 250HP		
CODE	DESCRIPTION	
SB	SIDE BATH, TWIN BEDS	
SBI	SIDE BATH, ISLAND BED	
SBID	SIDE BATH, ISLAND BED, DINETTE	

Features

AUTOMOTIVE

- (2)-200 amp. hour batteries
- Velvet Ride Torsilastic® Suspension
- 100 gallon fuel tank
- 160 amp alternator
- 160 amp battery isolator
- 2" square receiver hitch
- 9R22.5 Michelin® tires

- Air brakes
- Air hose for tire service
- Allison MT 643 transmission
- Clock in dash
- Cruise control
- Dry air cleaner
- Dual electric wipers & washers
- Engine compartment light
- Engine coolant heater - 110v
- Foretravel chassis 22,500 GVWR
- Full instrumentation
- Halogen headlights
- Heavy duty radiator; bolted construction
- One piece Alcoa® aluminum wheels
- Padded automotive-type dash with swing-up top for easy service
- Padded sun visors
- Power steering
- Racor® fuel filler
- Radiator water recovery system
- Stainless steel bumpers
- Transmission oil cooler

LIVABILITY

- 1 1/2" block Styrofoam® insulation
- Built in 13" color TV over dash
- 60×80 queen-size bed - SBI
- 36×76 Twinbeds-SB
- 4 burner cooktop with gas oven
- 40 channel CB radio
- 6-way electric driver scat base
- All wood drawers on full extension ball bearing glides
- Automatic closet lights
- Built-in vacuum cleaner
- Carpeted overhead cabinets
- Cedar lined wardrobe closet
- Corian countertops in kitchen & bath
- Corian table w/chairs on SBID
- Curtains and sheers
- Deadbolt lock
- Deluxe carpet & pad
- Digital alarm clock in bedroom
- Dometic® AES ref/freezer
- Dometic® AES ref/freezer/ice maker on SBID
- Electronic AM/FM/cassette with seek & scan
- Exterior cable TV hookup
- Eye level microwave/convection oven
- Fiberglass underskin

- Floor level night lights
- Fluorescent lighting throughout
- Full screen door
- Generator switch in bedroom & cockpit
- Ice maker on SBI
- Large bath/shower & tub combination
- Lighted vanity with mirror
- Motor-aid water heater with electronic ignition
- One piece fiberglass roof and sidewalls
- Porch & entry lights with touch switch
- Power ceiling vent in bath area
- Real wood paneling
- Recessed double stainless steel sink w/covers
- Recliner & swivel chair
- Reclining pilot & co-pilot seats
- Slide-out pantry
- Slide-out console table and drawer
- Sofa bed
- Thermostatically controlled fresh air ventilator
- Trash compactor except on dinette model
- TV antenna with booster
- Wall mount clock
- Wardrobe dressing mirrors
- Water pump switch in bath & kitchen
- Water purifier

ELECTRICAL

- 110 volt automatic changeover
- 110 voltmeter A polarity meter
- 50 Amp. shoreline
- 6.3 K.W. generator/L-P. fuel
- 75 Amp. converter-charger
- Master battery disconnect switch
- Trailer wiring

SAFETY

- Back-up lights
- Docking lights
- Emergency exit side windows
- Emergency flashers
- Entry door hand rail
- Fire extinguisher
- Halogen fog lights
- LP gas leak detector
- Large outside mirrors with angle vision, and turn signals
- Park lights

- Retractable seat belts
- Self-canceling directional signal lights
- Smoke detector
- Steel cage with aluminum roof frame
- Tinted safety glass
- Warning triangle reflector kit

HEATING/COOLING

- 17,250 BTU auto/AC
- 35,000 BTU auto heat/def.
- (2)-13,500 BTU roof AC with heat strips
- (2)-Ducted furnaces with electronic ignition (16,000 and 35.000 BTU)

CONVENIENCE

- 85 gal. gray water capacity
- 40 gal. black water capacity
- 1741b. LPG tank
- 77" interior height
- 88 gallon water capacity
- 2 gallon pre-charged water accumulator
- Bus type belly storage
- Computer screen system monitor
- Conveniently located dump hose & valves
- Doorbell
- Dual Hadley * air horns
- Exterior 110 v outlet
- Glove box
- HWH automatic leveling system
- Large interior storage
- Map lights for pilot & co-pilot
- Pilot & co-pilot ducted fan .-system
- Remote searchlight
- Roof mounted rack and ladder
- Safe
- Storage compartment lights
- Telephone jack

1992 Grand Villa ORED 3400, 3600

Models

MODEL NO	WHEEL BASE	RETAIL
Grand Villa 3400	204"	\$165,500
Grand Villa 3800	228"	\$167,000

MODEL NO		WHEEL BASE	RETAIL
OSHKOSH Rear Engine Diesel ORED			
Model number denotes approx length			
CODE	DESCRIPTION		
SB	SIDE BATH, TWIN BEDS		
SBI	SIDE BATH, ISLAND BED		
SBID	SIDE BATH, ISLAND BED, DINETTE		

Features

AUTOMOTIVE

- 100 gallon fuel tank
- 200 Amp. hour battery - Coach
- 2" square receiver hitch
- 9R 22.5 Michelin ® tires
- Allison transmission MT643
- Battery isolator
- Clock in dash
- Cruise control
- Cummins C8.3-250 h.p.
- Dry air cleaner
- Dual electric wipers & washers
- Engine compartment light
- Full instrumentation
- Halogen headlights
- Heavy duty alternator
- Heavy duty radiator
- One piece Alcoa® aluminum wheels
- Oshkosh VC-22-RD 22,500 GVWR chassis
- Padded automotive-type dash with swing-up top for easy service
- Padded sun visors
- Power disc brakes
- Power steering
- Stainless steel bumpers
- Transmission oil cooler

LIVABILITY

- 1 1/2" block Styrofoam® insulation
- 36×76 Twin beds-SB
- 4-burner cooktop with gas oven below
- 40 channel CB radio
- 60×80 queen-size bed -SBI
- All wood drawers on full extension ball bearing glides
- Automatic closet lights
- Built-in 13" color TV over dash

- Built-in breakfast bar with bench 3600 series except SBID
- Built-in vacuum cleaner
- Carpeted overhead cabinets
- Cedar lined double wardrobe closet
- Corian® countertops in kitchen & bath
- Corian® table w/chairs on SBID
- Curtains and sheers
- Deadbolt lock
- Deluxe carpet & pad
- Digital alarm clock in bedroom
- Dometic AES ref/freezer on SBI
- Dometic AES ref/freezer/ice maker on SBID
- Electronic AM/FM/cassette with seek
- Exterior cable TV hookup
- Eye level microwave/convection oven
- Fiberglass underskin
- Floor level night lights
- Fluorescent lighting throughout
- Full screen door
- Generator switch in bedroom & cockpit
- Ice maker on SBI
- Large bath/shower & tub combination
- Lavatory drawer - SB, SBI
- Lighted vanity with mirror
- Motor-aid water heater with electronic ignition
- One piece fiberglass roof & sidewalls
- Porch & entry lights with touch switch
- Power ceiling vent in bath area
- Real wood paneling
- Recessed double stainless steel sink with covers
- Recliner & swivel chair
- Reclining pilot & co-pilot seats
- Slide out pantry
- Slide out console table & drawer
- Sofa bed
- Thermostatically controlled fresh air ventilator
- Trash compactor - 3600 series except SBID
- TV antenna with 2 jacks
- Wall mounted clock
- Wardrobe dressing mirrors
- Water pump switch in bath, kitchen
- Water purifier

ELECTRICAL

- 110 volt automatic changeover
- 110 volt meter & polarity meter
- 50 Amp. shoreline

- 6.3 K.W. generator/LP fuel
- 75 Amp. convertor-charger
- Master battery disconnect switch
- Trailer wiring

SAFETY

- Back-up lights
- Emergency exit side windows
- Emergency flashers
- Entry door hand rail
- Fire extinguisher
- Halogen Tog lights
- large outside mirrors with wide angle vision, turn signals
- LP gas leak detector
- Park lights
- Retractable seat belts
- Self-canceling directional signal lights
- Smoke detector
- Steel cage with aluminum roof frame
- Steel chassis
- Tinted safety glass
- Warning triangle reflector kit

HEATING/COOLING

- (2) Ducted furnaces with electronic ignition (16,000 & 35,000 BTU)
- 17,250 BTU auto AC
- 35,000 BTU auto heat/def.
- (2)-13,500 BTU roof AC with heat strips

CONVENIENCE

- 194 lb. LPG tank
- 60 and 75 gallon waste tanks (3600)
- 77" interior height
- 88 gallon water capacity
- 2 gallon pre-charged water accumulator tank
- Antenna warning
- Battery boost switch
- Conveniently located dump hose & valves
- Dual electric trumpet horns
- Electronic systems monitor
- Exterior 110v outlet
- Glove box
- Large exterior storage
- Large interior storage
- LPG access door

- Map lights for pilot & co-pilot
- Pilot & co-pilot ducted fan system
- Remote searchlight
- Roof mounted rack and ladder
- Telephone jack

1992 Grand Villa 2900, 3000, 3300

Models

MODEL NO	WHEEL BASE	RETAIL
Grand Villa 2900	190"	\$109,500
Grand Villa 3000	190"	\$111,000
Grand Villa 3300	208"	\$125,000
Front Engine Gas / Diesel		
Optional Cummins 5.9 Diesel 190 hp		
Model number denotes approx length		
CODE	DESCRIPTION	
SB	SIDE BATH, TWIN BEDS	
SBI	SIDE BATH, ISLAND BED	
SBID	SIDE BATH, ISLAND BED, DINETTE	

Features

AUTOMOTIVE

- 2" square receiver hitch
- 200 Amp. hour battery - coach
- 90 gallon fuel tank
- Clock in dash
- Cruise control
- Dual wipers & washers
- Halogen headlights
- Heavy duty transmission
- Heavy duty radiator
- Inside rear view mirror
- Large trunk storage
- Large V8 engine/gas
- Cummins 5.9 diesel optional
- Padded automotive-type dash with swing-up top for easy service
- Padded sun visors
- Power disc brakes
- Power steering
- Radiator water recovery system

- Stainless steel wheel covers
- Stainless steel bumpers
- Transmission oil cooler
- Trunk light

LIVABILITY

- 1 1/2" block Styrofoam insulation
- 4-burner cooktop with gas oven below
- 40 channel CB radio
- 36×76 Twin beds-SB & RB
- 54×76 2900 SBI
- 60×80 queen-size bed - SBI
- All wood drawers on full extension ball bearing glides
- Automatic closet lights
- Built-in 13" color TV over dash
- Built-in vacuum cleaner
- Carpeted overhead cabinets
- Cedar lined closet
- Corian ® countertops in kitchen & bath
- Curtains and sheers
- Deadbolt lock
- Deluxe carpet & pad
- Digital alarm clock in bedroom
- Dometic AES ref/freezer
- Electronic AM/FM/cassette w/seek
- Exterior cable TV hookup
- Eye level microwave/convection oven
- Fiberglass underskin
- Fluorescent lighting throughout
- Generator switch in bedroom & cockpit
- Ice maker
- Laundry chute with removable bag (except 2900 SBI)
- One piece fiberglass roof & sidewalk
- Porch & entry lights
- Power ceiling vent in bath area
- Real wood paneling
- Recliner & swivel chair (except 2900 & 3000)
- Reclining pilot & co-pilot seats
- Slide-out console table & drawer
- Thermostatically controlled fresh air ventilator
- Tub and shower combination
- TV antenna with 2 jacks
- Wall mounted clock
- Water pump switch in bath & kitchen

ELECTRICAL

- 110 volt automatic changeover
- 50 Amp. shoreline
- 6.3 K.W. LP generator/diesel
- 7.0 K.W. generator/gas
- 75 Amp. converter-charger
- Master battery disconnect switch
- Trailer wiring

SAFETY

- Back-up lights
- Emergency exit side windows
- Emergency flashers
- Entry door hand rail
- Fire extinguisher
- Halogen fog lights
- Impact switch for emergency fuel pump shut down
- large outside mirrors with wide angle vision, turn signals
- LP gas leak detector
- Park lights
- Retractable seat bells
- Self-canceling directional signal lights
- Smoke detector
- Steel cage with aluminum roof frame
- Steel chassis
- Tinted safety glass
- Warning triangle reflector kit

HEATING/COOLING

- 17,250 BTU auto AC
- 35.000 BTU auto heat/def.
- (2)-13,500 BTU roof AC with heat strips
- Ducted furnace with electronic ignition (35.000 BTU) additional 16,000 BTU furnace on 3300 series

CONVENIENCE

- 194 lb. LPG tank/diesel model
- 100 lb. LPG tank/gas model
- 38 and 42 gallon waste tanks
- 70 gallon water capacity - SBI
- 64 gallon water capacity - RB
- 2 gallon pre-charged water accumulator tank
- 90 3/8" interior width
- 77" interior height
- Antenna warning
- Battery boost switch
- Electronic systems monitor

- Exterior 110v outlet
- Glove box
- Large exterior storage
- Large interior storage
- LPG access door
- Pilot & co-pilot ducted fan system
- Roof mounted rack and ladder
- Telephone jack

From:

<https://wiki.foreforums.com/> - **ForeForums Foretravel Motorcoach Wiki**

Permanent link:

https://wiki.foreforums.com/doku.php?id=through_the_years:1992

Last update: **2021/03/10 12:31**

