

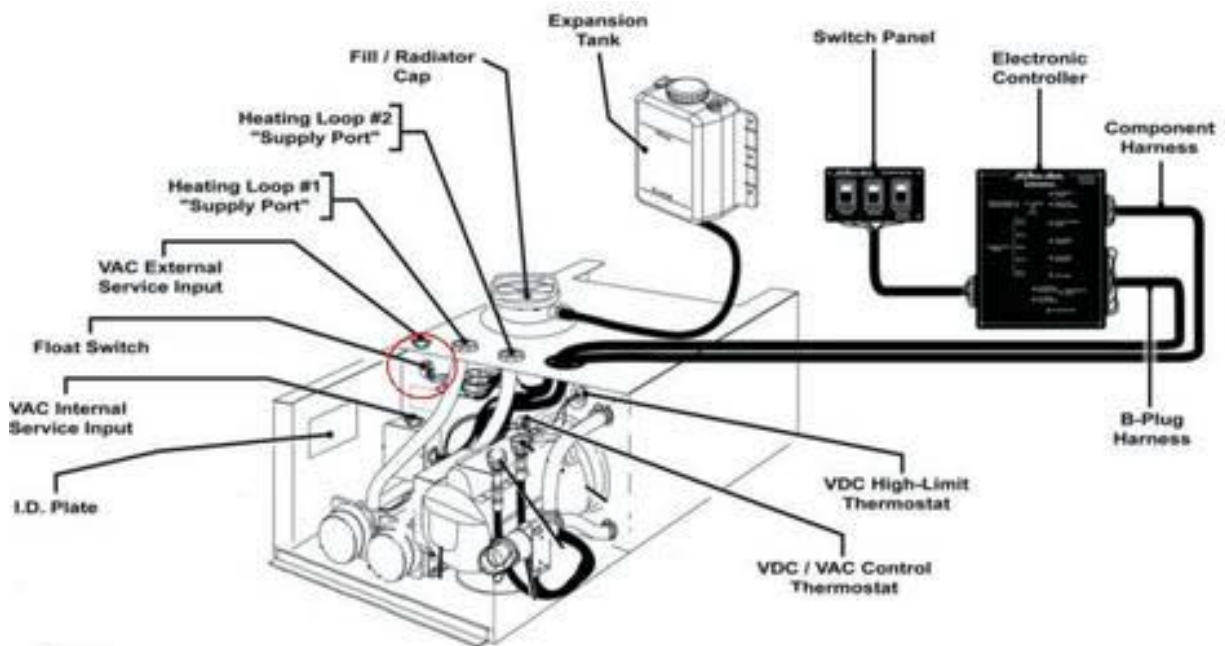
How to Defeat the Float Switch on Your Aqua-Hot

CAUTION: The following directions outline how to defeat the low water safety feature of your Aqua-Hot / Hydro Hot. This is intended to be a temporary repair so that your Aqua-Hot will run until proper repair has been completed. If you defeat this safety feature and your Aqua-Hot runs low on water, you will probably do serious damage to your Aqua-Hot. Proceed at your own risk.

With this safety feature by-passed you should check the water level (water overflow reservoir) DAILY.

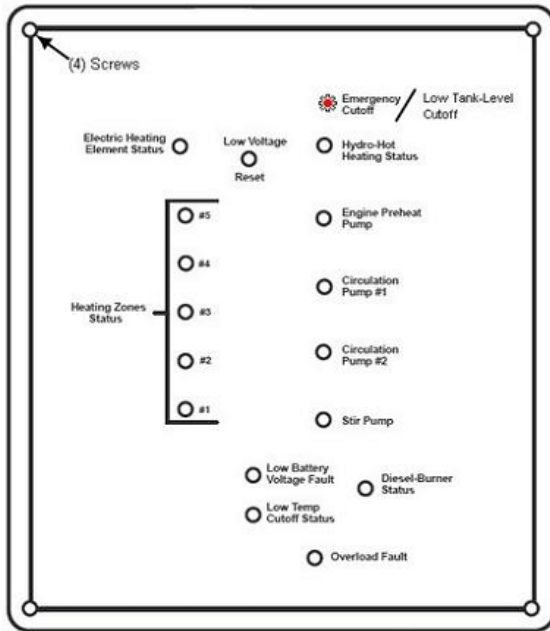
If you have verified that the supply tank on the Aqua-Hot is full by removing the 'radiator cap' and checking the coolant level. CAUTION: Make sure that the coolant is cool enough to remove the cap by touching the cap. If the coolant is HOT you will burn yourself and make quite a mess.

You will need to locate the electronic control board in your coach. It is usually placed in the bay adjacent to the Aqua-Hot unit. A drawing of the Hydro-Hot system layout is below.



The float switch location is shown circled in red above.

The control panel looks like the drawing below.

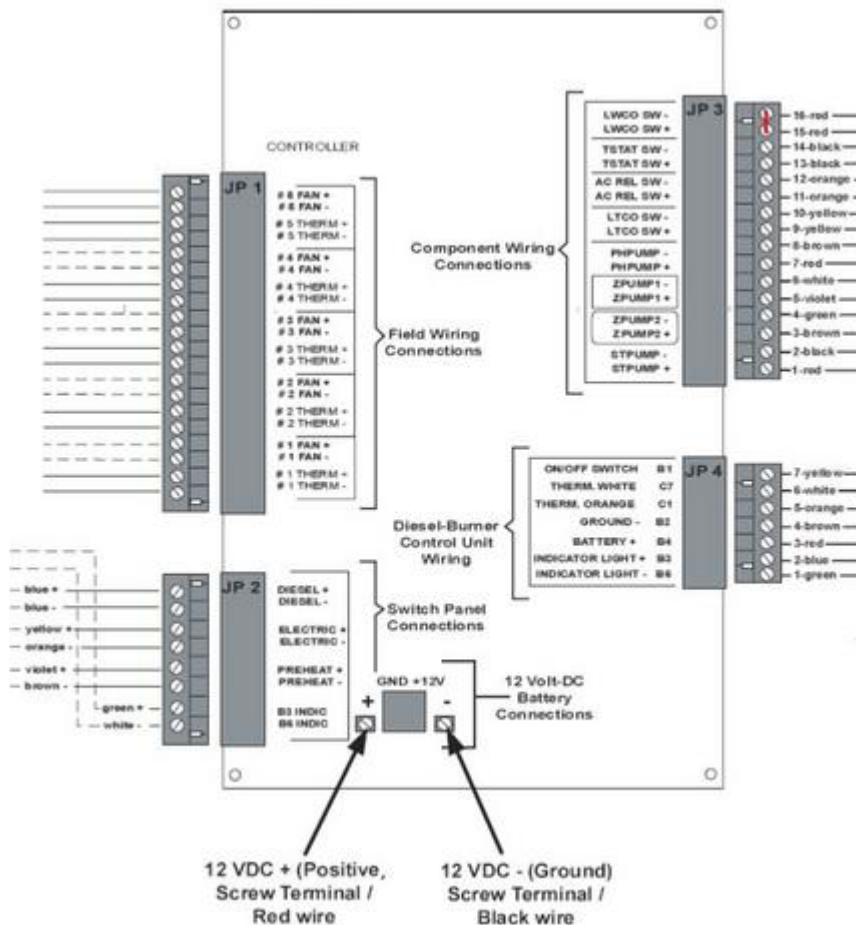


The light next to Emergency Cutoff / Low Tank Level Cut Off should be illuminated indicating low coolant.

Remove the cover on the electronic control by removing 4 screws, one in each corner.

Disconnect 12v power to board by removing the wire from the 12 VDC+ connection from the circuit board. Caution: This wire has 12 VDC+ and will short out if grounded.

You will need to install a 'jumper' wire as shown on the drawing below



On the plug on the upper right hand corner on JP3, remove the wire # 15 and #16, (Says LWCO SW- to LWCO SW+ on the circuit board). Install a jumper wire from the terminal on the plug where wire 15 and 16 were removed. A paper clip works great!

Reconnect 12v power to board.

The light next to Emergency Cutoff / Low Tank Level Cut Off should not be illuminated and the Aqua-Hot should now operate.

The float switch is a mechanical switch. On the older style Hydro-Hot units with the VERY LARGE radiator cap, you can feel the switch by reaching through the filler neck. On the new style Hydro-Hot with the 'standard' size cap, there is not enough room to get your hand inside.

Changing the float switch is not too bad of a 'Do-It-Yourself' project. You would remove some of the coolant from the tank, remove the switch (screws into a port on the tank on upper left), 2 wires, replace switch, and replace coolant. You can purchase the switch from <http://www.Parts.RVHydronicHeaterRepair.com>.

- Roger Berke -
2000 Foretravel U320 42'
Authorized Aqua-Hot Service Center

This article copyright – Roger Berke 12/2007 – Revised 2/2009