

Foretravel

Motorhomes of Distinction



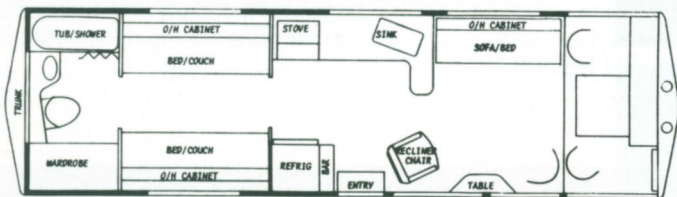
BUILT especially for YOU!

Make Your Dreams Come True with Foretravel



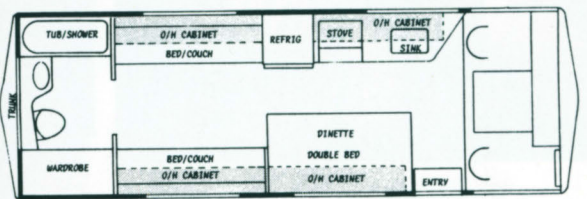
Beautiful. Comfortable. Yet unmistakably functional. A galley, bedroom and bathroom that's truly a home just like home. Designed **especially for YOU!**





Roomy as all outdoors. All the comforts of home. Large comfortable Flex-steel inner spring bed, couch, swivel chair and recliner. Make America your playground while you're safely surrounded with 2-inch sandwich foam construction with an integrated 1½-inch tubular steel superstructure by Foretravel.







Choice of real wood Indian Rosewood or Barcelona Pecan paneling. Floorplan and chassis. 23', 26', and 30' models with standard center or rear bath — see specification sheet for details. Optional custom work: rear kitchen, special bedrooms, *Commercial units* for schools, bank, mobile showrooms, mobile health clinics and others.

Foretravel Motorhomes are ready and able to go mile after mile, sea level or mile high. Body sturdily built of high quality materials and rubber mounted for a quieter ride. On a chassis especially designed for motorhomes — Dodge, Chevrolet, International, or Ford. When you own a Foretravel, you'll know why the February 1973 issue of TRAILER LIFE said,

"... Texas Mercedes are the lone star Rolls Royce ... the Foretravel is a similar motorhome that's 'beautiful' in many enduring ways that very few rigs are. In a world increasingly appreciative of lasting, honest quality and genuine depth of character. It follows as the night the day that motorhomes should be increasingly appreciative of that dark horse from Texas, the Foretravel."



Here's what Motorhome Life says about the Foretravel



MENTION THE WORD *diesel* to a motorhome owner or prospective buyer and watch his ears perk up. Put a diesel engine in a motorhome which actually has a real-life reclining chair, in addition to exceptional quality, and the result is a combination which is bound to be the center of attention.

There is a motorhome like this, and it's the Foretravel 30RB. The diesel engine is the Caterpillar Model 1145, a 522-cubic-inch V-8. And the recliner is so comfortable you wouldn't think it has any right to be in something on wheels.

But that's the way Foretravel does business: doing the unusual. You wouldn't think real wood paneling is an exotic feature, but the plastic-coated wood print paneling is used widely enough in the industry these days that Foretravel's natural Barcelona pecan is a refreshing change.

In our customary flat-highway fuel economy test, the Cat-powered Foretravel appeared to have an average economy edge of about 40% over what we have recorded with large-displacement gasoline engines on the same course, under similar conditions with similar motorhomes.

What the tests indicate is significant: the bottom does not fall out of the diesel economy picture when the accelerator pedal goes down. With gasoline engines being operated under heavy throttle in the mountains, mileage falls badly, to 5 mpg or below. The Caterpillar V-8 seems to take very little notice of heavy-throttle use, which means the fuel economy difference between the Cat and a large gasoline-powered V-8 may be as high as 80% in mountainous terrain.

This motorhome's plumbing self-containment is exceptional with 70 gallons of holding capacity for sink/shower water and 30 gallons for waste.

Outside storage also is good, with a large rear trunk and a lockable side storage compartment.

The Foretravel frame is all-steel, which puts it in the frame integrity class where it should be. The \$28,595 price tag with options was boosted in our test motorhome by the diesel conversion to \$38,585. The 1-1/2-inch tube steel frame members are part of the wall/roof/floor sandwich which consists of the interior paneling, the Styrofoam, 3/16-inch plywood and the

outer covering of fiberglass or aluminum.

Our 30RB reflects a great deal of planning and obviously is aimed at the owner who may spend several months each year on the road. It's very comfortable. Just how comfortable should be evident upon learning that the motorhome actually is equipped with a reclining chair.

In summary, The Foretravel 30RB stacks up well on its own merits, with conventional power. It's an exceptionally well-made motorhome, well insulated and with fine quality control. Add the Caterpillar/Allison combination and the mileage situation takes a decided turn for the better.

Comments from Others:

"Texas Mercedes" or "Lone Star Rolls Royce"

— February 1973 issue of *Trailer Life*.

"We searched through the 1973 Louisville Kentucky Show as well as other shows in the U.S.A. and finally found the motorhome we wanted in Foretravel"

— *Rolls Royce dealer from England*.

"In the spring of 1974 during the tornado that left Atlanta, Georgia with millions of dollars in damage, my brother and I in a 30RB Foretravel motorhome survived without any damage. We were parked in the midst of a very heavily damaged area (over \$250,000.00) — in fact just a few feet from two conventional type trailers that were completely destroyed."

— *John D. Fore, Special Project*.

"I have just finished reading the article in the February issue of TL concerning the Foretravel motorhome. My wife and I have looked at almost every make and model of motorhomes in this part of the East, and did not see anything we really thought was right for us until we saw the Foretravel. We drove over twelve hundred miles to Texas to see the plant where they are made. Everything in the article concerning quality and engineering, we found to be correct. I must say we are very impressed."

— *J. Richard Miller*.

"The bitter taste of poor quality remains long after the sweet smell of low price is gone."

— *Don Franklin, Marketing Manager*

"We say if you will show us any American made motorhome with as much quality, material and workmanship as Foretravel we will show you another Foretravel — no brags — just facts."

— *Clarence M. Fore, President, Foretravel, Inc.*

EVALUATION Foretravel 30RB					
	Poor	Acceptable	Good	Excellent	Superior
COACH					
Floorplan					
Construction					
Sleeping					
Storage					
Decor/Upholstery					
Insulation/Winterization					
Balance*					
Noise Control**					
Visibility					
Driver Comfort					
*Reflects additional weight of diesel conversion; rating with conventional power would have been good.					
**Reflects higher level of diesel noise; rating with conventional power would have been excellent.					
CHASSIS					
Braking					
Stability					
Body Roll in Curves					
Handling in Crosswinds					
Rough-Road Ride					
Trans Oil Temp					
Engine Oil Temp					



Foretravel

BUILT

especially for

YOU.



The small **COMPANY** that **DARES** to be **COMPARED** with the **GIANTS**



**High Quality Functional Interiors Surrounded with
1½ Tubular Steel Cage on Chassis of Your Choice
— Including Diesel**

Specifications subject to change without notice.



Foretravel, inc.

1221 N. Stallings Dr.
Nacogdoches, Texas 75961
Ph (713) 564-7602, 564-8367