

# Table of Contents

- 2006 Foretravel** ..... 3
  - Specifications Phenix / Nimbus** ..... 3
  - Brochures** ..... 3
  - Floor Plans & Exteriors** ..... 3
  - Photos** ..... 5
- Specifications** ..... 5
  - 2006 Phenix** ..... 5
    - Models & Codes ..... 6
    - WEIGHTS/RATINGS ..... 6
    - CHASSIS ..... 6
    - COCKPIT FEATURES ..... 7
    - APPLIANCES/ELECTRONICS/LIGHTING/AUDIO-VIDEO ..... 7
    - LIVABILITY ..... 8
    - HEATING/COOLING/ELECTRICAL ..... 9
    - SAFETY ..... 9
    - EXTERIOR FEATURES ..... 10
  - 2006 Nimbus** ..... 10
    - Features ..... 10
    - WEIGHTS/RATINGS ..... 11
    - CHASSIS ..... 11
    - COCKPIT FEATURES ..... 12
    - APPLIANCES/ELECTRONICS/LIGHTING/AUDIO-VIDEO ..... 12
    - LIVABILITY ..... 12
    - HEATING/COOLING/ELECTRICAL ..... 13
    - SAFETY ..... 14
    - EXTERIOR FEATURES ..... 14
    - OPTIONS ..... 15



# 2006 Foretravel

Specifications, Brochures, Floor Plans & Photos for model year 2006



- The 2006 Phenix introduced a new design for the front and rear end caps (w/HID headlamps)
- Early slides had aluminum edges on top that created a area for water to pool area, later units this area was filled in.
- The first year of the Nimbus line, it is basically a rebadged U295/U320.

## Specifications Phenix / Nimbus

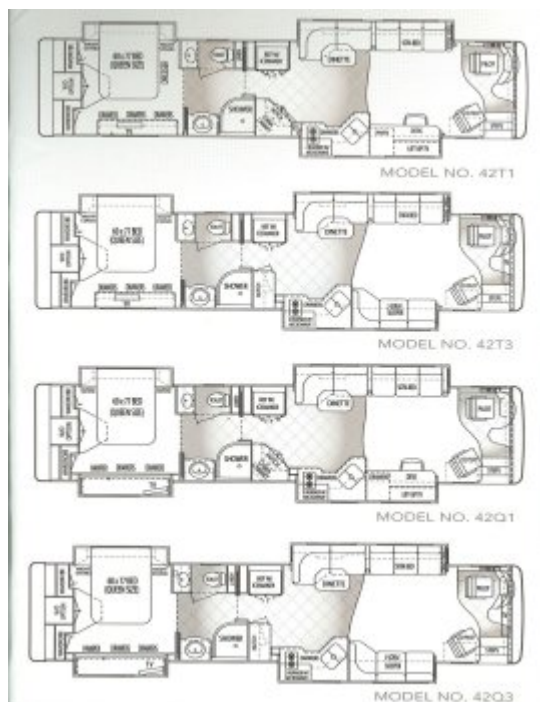
- [2006 Phenix Specifications](#)
- [2006 Nimbus Specifications](#)

## Brochures

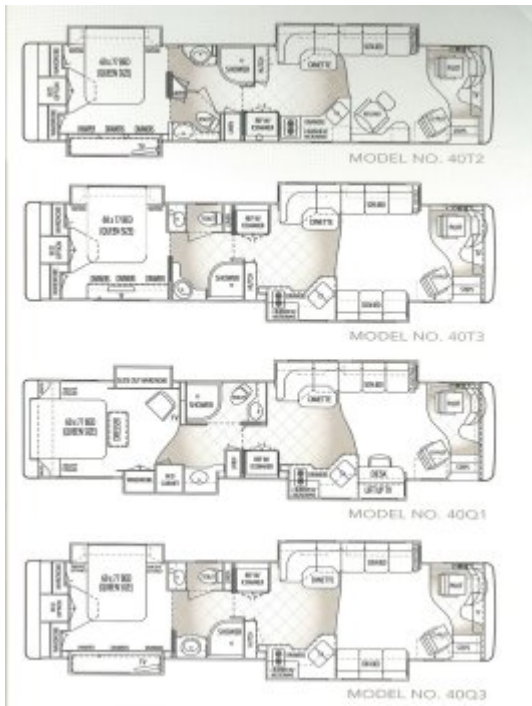
- [2006 Nimbus](#)
- [2006 Phenix Video](#)

## Floor Plans & Exteriors

- [2006 Phenix Floor Plans / Exteriors](#)



[2006 Phenix Floor Plans](#)



### 2006 Phenix Floor Plans



### 2006-phenix-1-exteriors



### 2006-phenix-2-exteriors

## Photos



2006 Nimbus



2006 Phenix

## Specifications

### 2006 Phenix

## Models & Codes

CODE	DESCRIPTION
40T2 / 42T2	TRIPLE SLIDE, 2 in REAR
40T3 / 40T3	TRIPLE SLIDE, 2 in FRONT
40Q1 / 40Q1	QUAD SLIDE, ISLAND BED
40Q3 / 40Q3	QUAD SLIDE, BED & CLOSET SLIDES

## WEIGHTS/RATINGS

## WEIGHTS/RATINGS

- Fresh water capacity: 95 gal.
- Gray water capacity: 100 gal.
- Waste water capacity: 50 gal.
- Fuel tank capacity: 150 gal.
- LP tank capacity: xx gal.
- Overall Height: 12' 4" (top of A/C's)
- Interior Height: 7'
- Exterior Width 102"
- Wheelbase: xxx"
- Available Lengths: 40, 42'
- Front GAWR: xx lb.
- Rear GAWR: xx lb.
- Tag GAWR: 10,000 lbs.
- GVWR: 46,800 lbs.
- GCWR: 60,000 lbs.

## CHASSIS

## CHASSIS

- Foretravel chassis and superstructure
- Cummins ISM 02 500 HP electronic diesel engine
- Allison 4000 MHR 6-speed transmission
- Allison dual-actuated transmission retarder
- Anti-lock braking system, air disc brakes on all wheels
- Air hose for tire service
- Alcoa aluminum wheels with Dura-Bright protection (6)
- Automatic Traction Control (ATC)
- Auxiliary 12v air compressor
- Computerized air-leveling system
- Electronic cruise control with dash indicator light
- 3-AGM engine batteries
- Front tow retrieval points
- Koni shock absorbers (8) on 440 and 442
- 10,000 lb. GAWR lifting tag axle
- Power steering
- Fuel system with air and water purge

- Radiator coolant recovery system
- Rear axle ratio: 4.33:1
- Remote battery jumper terminals
- Suspension: Firestone airbags, 100% air ride, 10-bags outboard mounted
- Tires: 295/80R22.5
- Transmission oil cooler
- 200-amp alternator (270-amp on Cummins ISX engine)
- 200-amp battery isolator (300-amp on Cummins ISX engine)
- 18,000 lb. rated receiver hitch

## **COCKPIT FEATURES**

## **COCKPIT FEATURES**

- AM/FM radio with 6-disc CD player (Satellite radio capable)
- Air tank switch
- Back-up monitor
- Back-lit analogue dash gauges
- Battery boost switch
- Cell phone connection and dual band antenna
- Cruise control with dash indicator light
- Driver drink holder
- In-dash Driver Information Center
- Electric windshield/privacy shades
- Generator start/stop switch with auto voltage and temperature start system
- Hand held CB radio with weather band
- Illuminated dash panels
- Pilot and co-pilot map lights
- Slide-out drink holder and snack tray
- Illuminated Smart Wheel steering wheel
- Synchronized windshield wipers
- Tilt and telescoping steering wheel
- Touch pad transmission gear selector
- Villa 6-way power pilot seat
- Villa 6-way power co-pilot seat with electric footrest
- 12v accessory receptacle
- One-piece windshield with shade band
- Automotive compass and outdoor temperature display
- Dash AC controls for co-pilot

## **APPLIANCES/ELECTRONICS/LIGHTING/AUDIO-VIDEO**

## **APPLIANCES/ELECTRONICS/LIGHTING/AUDIO-VIDEO**

- Whole house audio/video package: (All systems HD compatible)
- 32" LCD TV in living room area
- 20" LCD TV in bedroom
- Universal Remote Control MX 850
- Integra receiver, Integra CD/DVD player

- Flush-mounted speakers
- Powered subwoofer
- Stationary TV antenna with signal booster
- Accent lighting under counters, behind valances and in ceiling recesses
- Dometic NDA-1402-ID BSF 14cu. ft. refrigerator/freezer with in-door icemaker dispenser
- Floor-level accent lights
- G.E. Advantium microwave oven (black)
- Halogen accent lighting
- Halogen adjustable reading lamps in bedroom
- Silverleaf Total Coach system monitor
- Multiplex lighting control system
- Electric cook-top
- Washer/dryer connections

## LIVABILITY

## LIVABILITY

- Dometic air filtration system
- Air-operated step-well cover with dual controls
- Aqua-Hot hydronic heating and hot water system
- Bedroom alarm clock
- Built-in safe with electronic push-button lock
- Tile floor (kitchen, bath and driver/passenger area)
- Kitchen china cabinet (floor plan dependent)
- Color-coordinated throw pillows (sofa and bed)
- Concealed cabinet door hinges
- Designer kitchen faucet with pull-out sprayer
- Electric window shades (except on slide-out end windows)
- Drinking water filter
- Chair and ottoman (floor plan dependent)
- Electric Fantastic Fan in bath and toilet room, equipped with automatic closing rain sensor
- Generator start/stop switch in bedroom
- Handcrafted maple, walnut or cherry cabinetry
- All slide-out rooms flush with sidewalls when retracted
- Pneumatic seal on all slide-out rooms
- Magazine rack and drink holder at co-pilot seat
- Kitchen pantry
- China toilet
- Brushed nickel cabinet hardware
- Shower head slider
- Floor-to-ceiling wallpaper with chair rail
- Engineered stone countertops (kitchen, bath and living room)
- Engineered stone desktop (floor plan dependent)
- Engineered stone motorized dinette table (floor plan dependent)
- Solid surface entry steps with storage below
- Engineered stone nightstand and dresser tops
- Solid surface shower walls with soap and shampoo holder
- Stainless steel 2-compartment kitchen sink with flush-mounted covers
- Solid surface lavatory sink
- Telephone jack in living area and bedroom



- Tip-out storage below kitchen sink
- Water fill switch with automatic shut-off
- Water pump switch in kitchen, bath and utility station
- Queen bed (60" x 77")
- Roof skylight
- Self-closing drawer slides

## **HEATING/COOLING/ELECTRICAL**

## **HEATING/COOLING/ELECTRICAL**

- Aqua-Hot hydronic heating and hot water system
- Coach batteries: 8d gel with heat probe (3)
- Comfort Control Center for roof AC's
- Aqua-Hot and auto generator start
- Ducted air conditioning: Dometic 15,000 BTU roof
- AC with 2 heat pumps (3 units on 442)
- Electric surge-suppression system
- Low-battery generator auto-start
- Master battery disconnect switch
- Xantrex 3000w inverter/charger
- 10kw Power Tech diesel generator in quiet box (12.0kw on 442)
- 50-amp shoreline connection
- 28,000 BTU automotive air conditioner
- 52,000 BTU automotive heater/defroster

## **SAFETY**

## **SAFETY**

- All coaches built to RVIA specifications
- Allison transmission retarder with dual actuators
- Back-up camera (color)
- Carbon monoxide detector
- Smoke detector
- LP leak detector
- GFI protected circuits
- Chrome Ramco triple-head remote-controlled, heated mirrors with blinking LED indicators
- Daytime running lights
- Docking lights (4)
- Emergency flasher lights
- Fire extinguishers (2)
- Fog lights
- Heat probe on coach batteries
- High-mounted additional
- LED brake light and turn signals
- Interior exit-assist handle
- Lighted entry-assist handle
- Egress window

- Driver and passenger three-point seat belts and shoulder harnesses
- Deadbolt lock on entry door

## EXTERIOR FEATURES

## EXTERIOR FEATURES

- New design for front and rear end caps
- Air-Operated entry step
- Auxiliary rear brake lights and turn signals
- Carpeted storage bay
- Consolidated components bay
- Convenient utility station: Electric fresh water hose reel, electric 50-amp shoreline reel, hot and cold water faucet, soap dispenser, cable TV and phone connection, paper towel holder, 110v receptacle, water pump switch, water fill switch with automatic shut off
- Fiberglass roof (one piece)
- Fuel fill on both sides of coach
- Flush kits on black and grey tanks
- Integrated fairing on front and rear end caps with one electric Girard roof-mounted automatic patio awning and three awning shells
- Hidden air horns
- Peninsula dark grey tinted and insulated windows
- Joey Bed
- Increased height in storage door openings
- Top-hinged storage doors
- Keyless remote locks on entry door and storage bays
- Mounted touch-pad on outside sidewall to unlock entry door
- LED marker lights
- PTL entry door with screen and kick guard
- Porch light
- Door bell
- LP quick connect
- Manibloc plumbing system
- Rear mud flap with brushed stainless accent
- Painted exterior graphics with full body paint and double clear-coat finish
- Storage bay lights
- Trailer wiring
- TV outlet and 12v outlet in storage bay
- Roof AC drains
- Electric TV antenna

## 2006 Nimbus

### Features

### WEIGHTS/RATINGS

## WEIGHTS/RATINGS

- Fresh water capacity: 95 gal.
- Gray water capacity: 100 gal.
- Waste water capacity: 50 gal.
- Fuel tank capacity: 150 gal.
- LP tank capacity: 17.7 gal.
- Overall Height: 11' 6.5" (top of A/C's)
- Interior Height: xx"
- Exterior Width 102"
- Wheelbase: xxx"
- Available Lengths: 34, 36, 40'
- GVWR: 44,800 (34' 36' 34,800 lbs.)
- GCWR: 60,000 (34' 36' 51,000 lbs.)

## CHASSIS

### CHASSIS

- Foretravel chassis and superstructure
- Cummins ISL® 05-400 HP with engine brake
- Allison transmission MH 3000
- Air disc brakes on all wheels with ABS and automatic slack adjusters
- Alcoa aluminum wheels with Dura-Bright® protection (4 on 34' and 36', 6 on 40')
- Anti-lock braking system
- Air quick connect in storage bay
- Automatic traction control
- Auxiliary 12v air compressor
- Bilstein shock absorbers
- Computerized air-leveling system
- Cruise control with dash indicator light
- 3-AGM engine batteries
- Front tow retrieval points
- Power steering
- Cummins™ fuel filter/water separator
- Radiator coolant recovery system
- Rear axle ratio: 4.78:1
- Suspension: Firestone™ air springs, 8 bags on 34' or 36'; 10 bags on 40'; 100% air ride, outboard-mounted on all models (Lifting tag axle on 40')
- Tires: 295/80R22.5
- Transmission oil cooler
- 160-amp alternator
- 200-amp battery isolator
- 15,000 lb. rated receiver hitch

## COCKPIT FEATURES

## COCKPIT FEATURES

- AM/FM radio with CD player (Satellite radio capable)
- Air tank switch
- Back-up monitor
- Back-lit analogue dash gauges
- Battery boost switch
- Cell phone connection and dual band antenna
- Cruise control with dash indicator light
- Driver drink holder
- In-dash driver Information Center
- Electric windshield/privacy shade
- Shade band at top of windshield
- Generator start/stop switch
- Automotive compass and outdoor temperature system
- Illuminated dash panel
- Pilot and co-pilot map lights
- Slide-out drink holder and snack tray
- Illuminated Smart Wheel® steering wheel
- Synchronized windshield wipers
- Tilt and telescoping steering wheel
- Touch-pad transmission gear selector
- Villa\* leather 6-way power pilot seat
- Villa\* leather 6-way power co-pilot seat with electric footrest
- 12v accessory receptacle
- Tile flooring in entry way
- Dash AC controls for co-pilot

## APPLIANCES/ELECTRONICS/LIGHTING/AUDIO-VIDEO

### APPLIANCES/ELECTRONICS/LIGHTING/AUDIO-VIDEO

- Audio-Visual
- Stationary TV antenna with signal booster
- 24" CRT TV in living room
- Home theater system in living room with recessed speakers (including AM/FM, DVD/CD)
- Floor-level accent lights
- Halogen adjustable reading lamps in living room and bedroom
- Inverter/Power monitor panel in living room area
- Recessed Seaward® 2-burner cook top with electronic ignition
- 1292 Dometic side-by-side 12 cu. ft. refrigerator on 36' and 40'; 10 cu. ft. on 34'
- Microwave/convection oven
- Washer/dryer connections

## LIVABILITY

### LIVABILITY

- Air-operated step-well cover with dual controls

- Tile flooring (kitchen and bath)
- Color-coordinated throw pillows (sofa and bed)
- Designer window treatment with day/night shades
- Designer kitchen faucet with pull-out sprayer
- Drinking water filter
- Leather chair with footrest
- Electric Fantastic Fan® in bath and toilet room, equipped with automatic closing rain sensor
- Handcrafted stained cabinetry
- All slide-out rooms flush with sidewalls when retracted
- Pneumatic seal on all slide-out rooms
- Magazine rack and drink holder at co-pilot seat
- Kitchen pantry
- Solid surface lavatory sink
- China toilet
- Brushed nickel cabinet hardware
- Shower head slider
- Solid surface countertops (kitchen and bath)
- Solid surface desktop (floor plan dependent)
- Solid surface dinette table with leaf
- Solid surface nightstand tops
- Stainless steel kitchen sink with covers
- Storage under entry step
- Telephone jack in living area and bedroom
- Water pump switch in kitchen and bath
- Queen bed (60" x 77')
- Floor-to-ceiling wallpaper with matching border and chair rail
- Skylight above shower
- Concealed door hinges
- Tip-out storage below kitchen sink

## **HEATING/COOLING/ELECTRICAL**

## **HEATING/COOLING/ELECTRICAL**

- Coach batteries: 8D Thermoil lead-acid (2) with heal probes
- Comfort control center for AC and heater
- Ducted air conditioning: Dometic two 13,500 BTU roof AC (2) on 34' and 36', 15,000 BTU living room roof AC on 40', 13,500 BTU on rear of 40'
- Hydro-Hot® hydronic heating
- Electric battery disconnect with LED indicator
- Electrical surge-suppression system
- Low-battery generator auto-start
- Xantrex RS 2000w inverter/charger
- 8kw Power Tech diesel generator in quiet box
- 50 amp shoreline connection
- 28,000 BTU automotive air conditioner
- 52,000 BTU automotive heater/defroster

## SAFETY

## SAFETY

- All coaches built to RVIA specifications
- GFI protected circuits
- Polarity meter/monitor - 120v
- Back-up camera (color)
- Daytime running lights
- Emergency flasher lights
- Fire extinguishers (2)
- High-mounted additional LED brake light and turn signals on rear cap
- Interior exit-assist handle
- Lighted entry-door assist handle
- LP leak detector
- Smoke detector
- Carbon monoxide detector
- Non-skid surface on roof near ladder
- Driver and passenger 3-point seat belts and shoulder harnesses

## EXTERIOR FEATURES

## EXTERIOR FEATURES

- Air-operated entry step
- Auxiliary rear brake lights and turn signals
- Carpeted storage bays
- Consolidated components bay
- Convenient utility station: Fresh water connection, 50-amp shoreline connection, hot and cold water faucet, soap dispenser, cable TV and phone connection, paper towel holder, 110v receptacle
- Dual halogen head lamps with turn signals
- Fiberglass roof (one-piece)
- Fuel fill on both sides of coach
- Hidden air horns
- Dual-pane insulated windows
- Painted exterior graphics with full body paint and clear coat finish
- Girard roof-mounted, automatic patio awning
- Slide-out toppers above all slide-outs
- Aluminum ladder
- Marker lights
- Lighted entry door with assist handle
- Porch light
- PTL® entry door with screen and kick guard
- Manibloc plumbing system
- Mud flaps
- Trailer wiring
- TV outlet and 12v outlet in storage bay
- Black double-head mirrors
- Storage bay lights
- Electric TV antenna

## OPTIONS

## OPTIONS

- Comfort package: Electric utility reels, LP connection, black and grey flush kits, built-in vacuum cleaner
- HD satellite package: 1 HD satellite, 1 HD receiver, 32" LCD TV in living room
- Outdoor entertainment package: 32" LCD TV on swing-out arm, AM-FM-CD with speakers wired to TV
- 32" LCD TV in living room
- Satellite antenna - TracStar SV-360 In-Motion
- Satellite receiver
- Satellite radio
- GPS navigation
- VCR
- AM/FM DVD/CD bedroom stereo
- 6-Disc CD player/changer at dash
- Satellite radio (XM or SIRIUS requires subscription)
- Silverleaf VMS400™
- Shower footrest
- GE Advantium oven
- Security system
- Joey Bed
- Solar battery charger
- Washer/dryer combination
- Girard electric window awnings
- 100 lb. Freezer
- Chrome triple-head mirrors
- Allison transmission retarder
- 10kw Power Tech generator
- 12kw Power Tech generator
- 15,000 BTU roof AC on 34' or 36
- Clear shield paint protection below windshield
- Keyless remote locks on storage doors
- Hand held CB radio with weather band
- Rope lighting in ceiling recesses

From:

<https://wiki.foreforums.com/> - **Foretravel Wiki**

Permanent link:

[https://wiki.foreforums.com/through\\_the\\_years:specs:2006](https://wiki.foreforums.com/through_the_years:specs:2006)

Last update: **2025/02/13 16:41**

