

Media

Photos



Brochures

Refrigerator/Freezer Rec'd-a-Mate® exhaust fan in kitchen Magazine rack and drink holder Inside co-pilot seat Microwave/convection oven Plank floor in kitchen area Power pilot and co-pilot seats Recessed fluorescent lighting Recessed 3 burner cooktop Sealed® porcelain toilet Shower head fixture Slide-out shelf under kitchen sink Solid surface countertops, kitchen and bath Solid surface dining table with leaf Sony® AM/FM cassette stereo in dash Sony® AM/FM cassette stereo in bedroom Scales and kitchen sink Tip-out storage below kitchen sink TV antenna with signal booster VCR in front overhead VCR control eye in bedroom Wainscot walls with vinyl wall covering Washable dining surfaces Water-tight connections Water pump switch in kitchen and bath Wrap-around dash with fold up each tray 26" TV in front overhead 13" TV in bedroom 40 channel CB radio 60" x 80" Queen bed	Antenna wiring done Audio ST-30® Stereo Monitor with backup camera, on-board chronometer and compass Cellular telephone antenna and connections Compartimented air landing system with auxiliary 12v air compressor Illuminated dash panel Keyless remote locks on entry door and storage bay doors Marbled® plating system Map light for pilot and co-pilot Synchronized windshield wipers Smart Wheel® steering wheel with headlamp flash, marker lamp flash, cruise control and superwiper controls Telephone jack (2) 16 gal. 3-way water heater
CAPACITIES	
GVWR	31,000 lbs.
Front GVWR	12,000 lbs.
Rear GVWR	19,000 lbs.
GCWR	36,000 lbs.
Fresh water	182 gal.
Gray water	110 gal.
Black water	54 gal.
Fuel tank	149 gal.
LP capacity	42 gal.
POPULAR OPTIONS	
"Limited Edition" appearance package Dance® DSS machine system with Sony® motor Aqua-Flow® hydronic heating (ordered separately) Stereosonic® music/stereo Base Lifestyle 250 home theater Zip Dye® window tinting package Outdoor entertainment center 1800 Deco Hose and shower reels Sleep® 16 disc CD player Trekforce® wireless security system Tilt floor in bathroom Solar panels Metal drawers in storage bay Caroline® compactors	
PRICING	
5000	\$322,500
4000	\$353,000

CHASSIS

Forward monocoque chassis
General® CR-5 325 hp diesel engine
Allison® MDS 366GE, 4 speed transmission with
manifold
Allison® Alternators wheels (8)
Anti lock braking system
Grates control
Dual halogen headlights
Engine heater: (1) Optima® gel type
Engine block heater
Full audio communication
Electric® shock absorbers (8)
Power Steering
Radiator coolant recovery system
Raw air intake: 5.130
Remote start in engine compartment
Reduced® air disc brakes
Suspensions: 8 bag, 100% air ride
Tires: Michelin® 275 98R22.5 P95ZA
Transmission oil cooler
Racor® fuel filter/water separator
160 amp alternator
190 amp battery isolator

SAFETY

Allison® transmission monitor
Back-up light
Carbon monoxide detector
Docking light (5)
Brake door and handle
Fire extinguisher
Halogen fog lamps
LP leak detector
Non-skid surface on roof near ladder
Polarity meter in utility station
Smoke detector
Racor® air filter
8" air - top of windshield

EXTERIOR FEATURES

Air hose for air service
Air operated entry step
Capped storage bins
Convention Utility Station:
Fresh water hook-up, 30 amp shoreline
connection, hot & cold water faucet,
soap dispenser, cable TV & phone
connections, paper towel holder, 110v
outlets, city access dump valve,
polarity meter, water pump switch
General® insulated windows

Insulated bonded glass china cabinet door
Leather Villa® dining table (6200 series)
Leather Villa® recliner or lounge
Leather Villa® sofa bed
Leather Villa® pilot and co-pilot seats
Magazine rack and drink holder behind co-pilot seat
Marquise® porcelain toilet
Maroon/cream color
Plank floor in kitchen area
Power pilot and co-pilot seats
Recessed fluorescent lighting
Recessed Gipsy® 2 burner cooking
Shower head slider
Slide-out shelf under kitchen sink
Solid surface countertop, kitchen and bath
Solid surface dining table with leaf
Sony® JMT/PM cassette stereo in dash
Tie-on storage below kitchen sink
TV antenna with signal booster
VCR in front overhead
VCR control eye in bedroom
Wardrobe with vinyl vinyl wall covering
Washer/dryer connections
Water pump switch in kitchen and bath
Window screen lighting
Wrap-around dash with 640 sq inch tray
20" TV in front overhead
17" TV in bedroom
20" TV in bedroom (4200 series)
40 channel CB radio
66" x 86" Queen bed

ELECTRICAL

Prodon 25 1/2 hour Inverter® inverter/dgtr.
18.0 kw PowerTide® diesel generator
12.0 kw PowerTide® diesel generator (4200 series)
110v Powerwatch® meter
50 amp shoreline connection
Cushion battery (10.80 gal type)
Generator low battery monitor
Electric motor battery disconnect switch

HEATING/COOLING

Aqua-Hot® hydronic heating
Comfort Control Center® re control
A/C and Aqua-Hot®
Ducted air conditioning with (2) 13,500 btu
wall A/C with electric heat strips
(4200 series - 3 A/C's)
17,250 btu remote air conditioner
35,000 btu remote heat exchanger

Door bell
Dual Halogen® air filter
Fuel filter 2.100
Large pass-through storage bins
Lighted entry door and handle
Lighted storage bins
MacGill® 299 gallon remote tank
Mail bags
One-piece covered fiberglass roof
Parade® (two-style) storage bag doors
with keyless remote locks
Dash light with truck switch
PTLP entry door with keyless remote lock
Racor® remote-controlled and
heated mirrors with wide-angle
vision, chrome
Roof rack and ladder
Screen door
Shelf in fresh water bay
Shelf in LP compartment
Slide-out cargo tray
TV meter in storage bay
Unwind sideboards
Zip-Door® patio awning

INTERIOR LIVABILITY

Bedroom slats dock
Base Companion® audio surround
sound system
Bunk in side
Cedar-lined washroom
Chandelier in dining table
Concealed cabinet door hinges
Corian® laundry sink
Designer accent pillows, sofa and bed
Designer window treatments with day/night
shades in living room
Docking light switch in bedroom
Domestic® refrigerator/freezer
with wood inserts
Drinking water filter
Ducted air conditioning
Extra-wide co-pilot seat
Furniture, 7x6" in both
Fluorescent® sofa bed
Hessert® lounge or recliner
Hessert® pilot & co-pilot seats (leather & vinyl)
Floor level accent light
Fully lined shower with three doors in bedroom
Generator switch in dash and bedroom
Guestroom kitchen faucet with spray
Halogen accent lighting
Hand-crafted rubber cabinetry

CONVENIENCE

Air-operated step-well cover
Antenna warning alarm
Audio RTSP Screen Monitor with backup
camera, window thermometer and compass
Cellular photo antenna and connection
Computerized air-feeding system with
auxiliary 12v air compressor
Illustrated dash panel
Keyless remote locks on entry door
and storage bay door
Manifold plumbing system
Map light for pilot and co-pilot
Master Wash® steering wheel with heating
(dash, master long dash, cruise control
and wiper/washer controls)
Synchronized windshield wipers
Telephone jack (2)

CAPACITIES

GVWR	12,550 lbs.
GVWR (4200 series)	42,000 lbs.
Front GVWR	12,550 lbs.
Rear GVWR	20,000 lbs.
Rear GVWR (4200 series)	21,000 lbs.
Tag GVWR (4200 series)	9,600 lbs.
GCWR	30,000 lbs.
GCWR (4200 series)	40,000 lbs.
Fresh water	302 gal.
Gray water	110 gal.
Black water	54 gal.
Fuel tank	194 gal.
LP capacity	17.6 gal.

POPULAR OPTIONS

"Limited Edition" appearance package
Dometic® DSS audio system with
Stereo® receiver
Sylwilde® washer/dryer
Outdoor entertainment center
1800 freeze
Flow and shoreline tools
Trekman® window security system
Tire floor in bedroom
Solar panels
Canadian components

PRICING

3400	\$374,500
4000	\$465,000
4200	\$493,000

CHASSIS	
Frontend monocoque chassis	
Cummins M111 Celer Plus® 400 hp diesel engine	
Allison® TDE-400BLL 6 speed transmission with retarder	
Allison® All-Steer™ wheels (35 1420R Series - R)	
Auto lock backing system	
Cruise control	
Dual halogen headlights	
Engine battery box (3) Options® gel type	
Engine block heater	
Full swing instrumentation	
Knee® shock absorbers(3)	
Power Steering	
Radiant coolant recovery system	
Rear axle ratio: 3.91:1	
Retarder: start to engine disengagement	
Rachet® air line locker	
Suspension: 8 bag, 300% air ride (4200 series - 20 bag)	
Tires: Michelin® 275/80R22.5 PSL2A	
Transmission oil cooler	
Wet® fuel filter/separator	
160 amp alternator	
150 amp battery isolator	
SAFETY	
Allison® transmission retarder	
Back-up lights	
Carbon monoxide detector	
Docking lights (4)	
Every door auto latches	
Fire extinguisher	
Halogen fog lamps	
LP tank detector	
Non-slip surface on roof over ladder	
Priority motor in utility station	
Seismic detector	
Roof® air vision	
8" view - top of windshield	
EXTERIOR FEATURES	
Air hose for fire service	
Air operated entry step	
Caped entry bay	
Commuter Utility Station:	
Peak water hook-up, 50 amp	
shoulder connection, hot & cold	
water faucet, soap dispenser, cable	
TV & phone connections, paper	
and lock, 130 amp/grade, ramp	
motor dump valve, polarity sensor,	
water pump switch, electric water	
tank fill valve.	
Solid surface countertops, kitchen and bath	
Solid surface dining table with leaf	
Stainless steel kitchen sink	
Sony® AM/FM/cassette in dash	
TV antenna with signal booster	
VCR in front overhead	
Wannet walls with vinyl wall covering	
Wardrobe dressing mirror	
Washer/dryer compartments	
Water pump switch in kitchen	
Wrap-around dash with fold up truck tray	
20" TV in front overhead	
15" TV in bedroom	
40 channel CB radio	
60" x 80" Queen bed	
ELECTRICAL	
Freedom 20 Hiatt Inverter® inverter/charger	
8.8 kw Power Tech® diesel generator	
130k Powerwatch® meter	
50 amp shoreline connection	
Coach battery: (2) 86 gal type	
Generator low battery auto-start	
Electric motor battery disconnect switch	
Trailer wiring	
HEATING/COOLING	
Comfort Control Cruise® to control	
A/C and furnace	
Ducted air conditioning with (2) 11,500	
Btu roof A/C with electric heat strips	
40,000 lbs ducted furnace with	
electronic ignition	
17,250 lbs automotive air conditioner	
35,000 lbs automotive heater/dehumidifier	
CONVENIENCE	
Air-operated step-well cover	
Antenna warning alarm	
Audio STG® Systems Monitor with	
back-up camera	
Compressed air leveling system with	
auxiliary 12v air compressor	
Electronic dash panel	
Molded-in plumbing system	
Map light for pilot and co-pilot	
Smart Wheel® steering wheel with	
headlamp flash, marker lamp flash, cruise	
control and speed/weather controls	

Cruise® insulated windows
Door bell
Dual Halogen® air horns
Fuel fill 2 sides
Large pass-through storage bays
Lifted entry door auto handle
Lifted storage bays
Marlwood 20" gelcoat exterior finish
Modular storage drawers (2)
Mud flaps
One-piece crowned fiberglass roof
Rooflet (two style) storage bay doors with
locking remote locks
Roof light with touch switch
PTU entry door with keyless remote lock
Remote® remote controlled and
beared mirrors with wide-angle
vision, chrome
Roof rack and ladder
Screen door
Shelf in fresh water bay
Shower in LP compartment
Slide-out cargo tray
TV antenna in storage bay
Unisoll sidevents
Zip Dr® patio and window awnings
INTERIOR LIVABILITY
Bedroom alarm clock
Bow Lifestyle 15" home theater system
Built-in desk (EDGE, plus only)
Built-in safe
Café-loud windows
Chandelier in dining table
Controlled cabinet door hinges
Cover® sinks, kitchen and bath
Designer accent gelcoat, only end bed
Designer window treatments with day/night shades
Docking light switch in bedroom
Detachable® refrigerator/freezer with wood interior
Drinking water filter
Electric furnace on wide on pilot size
Forward fire® in bath
Flare level accent lights
Fullly fitted drapes with down shades in bedroom
Generator switch in dash and bathroom
Generator kitchen faucet with spray
Halogen accent lighting
Hand-crafted walnut cabinetry
Home theater system in bedroom
Kitchen in refrigerator/freezer
Kool-a-Matic® exhaust fan in kitchen

Synchronized windshield wipers
Telephone jack in living area
18 gal. 3-way water heater

CAPACITIES	
GVWR	51,000 lbs.
Front GVWR	12,000 lbs.
Rear GVWR	19,000 lbs.
GCWR	30,000 lbs.
Fresh water	182 gal.
Gray water	130 gal.
Black water	54 gal.
Fuel tank capacity	149 gal.
LP tank capacity	42 gal.

POPULAR OPTIONS	
Dance® DSS satellite system	with Sony receiver
Splendide® washer/dryer	
Keyless remote locks on entry door	and storage bay doors
Zip Dr® window awning package	
Duckhorn entertainment center	9000 freezer
Sony® 16-disc CD player	
Slide-out cargo tray	
Telexone™ wireless security system	
Chorus mirrors	
Tile floor in bathroom	
Solar panels	
Canadian components	

PRICING	
3400	\$253,500
3600	\$259,800

CHASSIS

Forward monocoque chassis
 Cummins® C33 325 hp diesel engine
 Allison® MD-560R, 6 speed transmission
 with overdrive
 Allison® Automatic vehicle (AV)
 Anti-lock braking system
 Cruise control
 Dual halogen headlights
 Engine harness (2) Optima® gel-type
 engine block heater
 Full analog instrumentation
 Blower® shock absorbers (8)
 Power steering
 Radiator coolant recovery system
 Rear axle ratio: 5.13:1
 Remote start in engine compartment
 Rockwell® air ride brakes
 Suspension: 8 bag, 100% air ride
 Tire: Michelin® 275/60R22.5 PSZA
 Transmission oil cooler
 Ram® fuel filter/water separator
 130 amp alternator
 160 amp battery isolator

SAFETY

Allison® transmission monitor
 Backup lights
 Carbon monoxide detector
 Docking light (4)
 Entry door mirror handle
 Fire extinguisher
 Halogen fog lamps
 LP tank detector
 Non-skid surface on roof near ladder
 Ram® run vision
 Smoke detector
 8" air - top of windshield

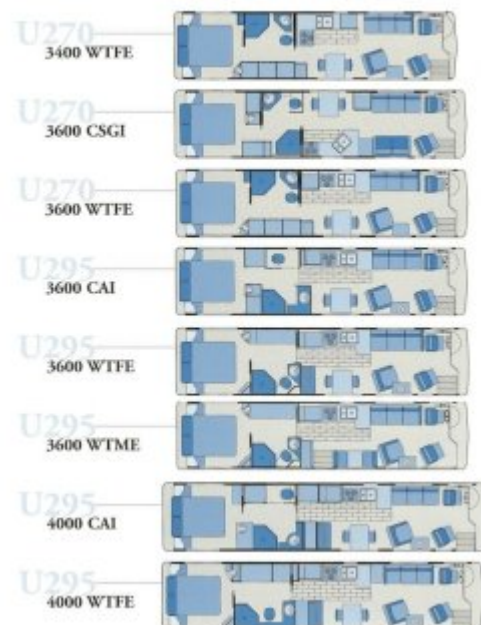
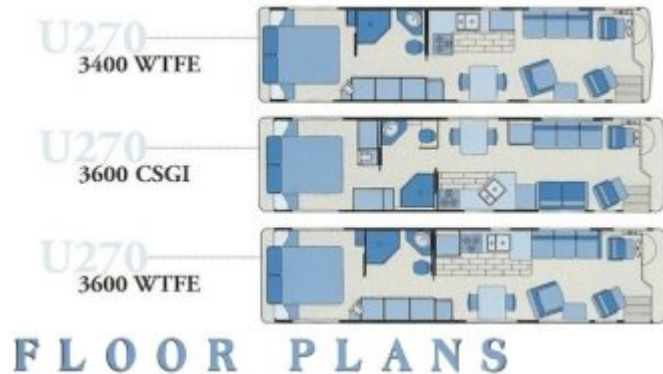
EXTERIOR FEATURES

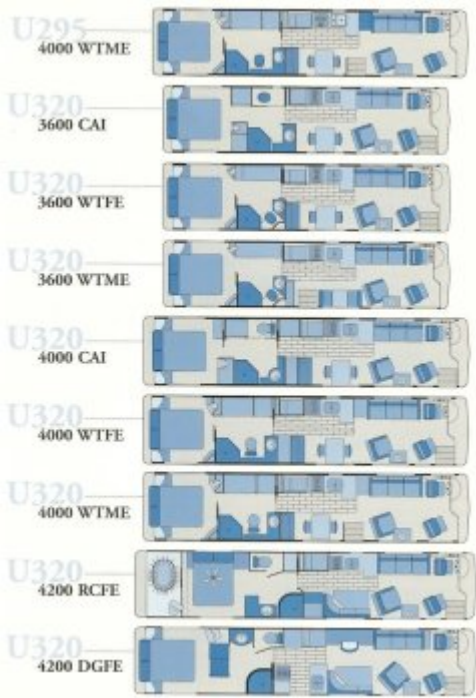
Air operated entry step
 Carpeted floors in storage bays
 Corrosion UNK® Station
 Fresh water hookup, 50 amp shore-line
 connection, hot & cold water faucet, soap
 dispenser, cable TV & phone connections,
 paper towel holder, 130 v. receptacle, easy
 access dump valve
 Corrosion® insulated windows
 Dual Halley® air horns
 Fuel 80 T sides
 Large pass-through storage bay

Lighted entry door mirror handle
 Lighted storage bay
 MaxGuard™ 299 gloss exterior finish
 Mud flaps
 One-piece covered fiberglass roof
 Peach light
 PTL® entry door
 Ramco® remote controlled lift-lowered
 mirror with wide-angle vision
 Roof rack and ladder
 Screen door
 TV meter in storage bay
 Universal mirrors
 Zip-Door® porta seating

INTERIOR LIVABILITY

Revised mirror mirrors in bedroom
 corner cabinet
 Revised mirror headboard
 Color-lined wardrobe panels
 Chair cushion in kitchen
 Closet light
 Designer accent pillows, sofa and bed
 Designer window treatments with
 day/night shades in living room
 Draining water filter
 Drink holders on duals
 Drink holder inside co-pilot seat
 Decent air conditioning
 Fennec® Fan® in back
 Flonit® sofa bed
 Flonit®® lounge (some models)
 Flonit®® recliner (some models)
 Flonit®® pilot & co-pilot seats
 Floor level accent lights
 Fully lined drapes with sheer shades
 in bedroom
 Generator switch at duals
 Halogen accent lighting
 Hand-crafted oak cabinetry
 formatter with sound meter
 Kool-Aid®® vibrant fan in kitchen
 Magazine rack inside co-pilot seat
 Microwave/convection oven
 Norcold® refrigerator/freezer with
 mood lights
 Park floor in kitchen area
 Power pilot seat
 Recessed fluorescent lighting
 Recessed 3 burner cooktop
 Sealed® porcelain toilet
 Shower head slider





Specifications

1998 U320

MODEL NO	WHEEL BASE	LENGTH	HEIGHT	WIDTH	INT HEIGHT	RETAIL
4200 U320		42'	11'4"	102"	80"	\$459,000
4000 U320	276"	40'	11'4"	102"	80"	\$405,000
3600 U320	228"	36'	11'4"	102"	80"	\$374,500
CODE	DESCRIPTION					
CAI	CENTER AISLE, ISLAND BED					
WTFE	WALK THROUGH BATH, FRONT ENTRY					
DGFE	DOUBLE GALLEY, FRONT ENTRY					
WTME	WALK TRHOUGH BATH, MID ENTRY					
RCFE	REAR CLOSET, FRONT ENTRY					

Features

WEIGHTS/RATINGS

- GVWR: 32,350 lbs.
- GVWR (4200): 42,000 lbs.
- Front GAWR: 12,350 lbs.
- Rear GAWR: 20,000 lbs.
- Rear GAWR (4200): 21,000 lbs.
- Tag GAWR (4200): 9,000 lbs.

- GCWR: 38,000 lbs.
- GCWR (4200): 48,000 lbs.
- Fresh water capacity: 102 gal.
- Gray water capacity: 110 gal.
- Black water capacity: 54 gal.
- LP Tank: 17.6 gal.
- Fuel capacity: 194 gal.

CHASSIS

- Foretravel Monocoque Chassis
- Engine: Cummins M11 Celect Plus 450 h.p.
- Allison HD4060 6 speed with retarder
- Alcoa aluminum Wheels (6) (4200 Series - 8)
- Anti-lock Braking-System
- Cruise control
- Dual Halogen headlamps
- Engine batteries: (3) Optima gel type
- Engine block heater
- Full analog instrumentation
- Koni shock absorbers
- Power Steering
- Radiator coolant recovery system
- Rear axle ratio: 3.91:1
- Remote Start panel in engine compartment
- Rockwell Air disk brakes
- Suspension: 8 bag 100% air ride (4200 series 10 bag)
- Tires: Michelin 275/80R22.5 PXZA
- Transmission oil cooler
- Winn fuel filter/water separator system
- 160 amp alternator
- 190 amp battery isolator

LIVABILITY

- Bedroom alarm clock
- Bose Lifestyle 25 home theater system
- Built in desk (DGFE plan only)
- Built-in safe
- Cedar-lined wardrobes
- Chandelier at dining table
- Concealed cabinet door hinges
- Corian sinks in kitchen and bath
- Designer accent pillows, sofa and bed
- Designer window treatment with day/night shades
- Docking light switch in bedroom
- Dometic refrigerator / freezer with wood inserts
- Drinking water filter

- Electric footrest on wide co-pilot seat
- Fantastic fan in bath
- Floor level accent lights
- Fully lined drapes with sheer shades in bedroom
- Generator switch at dash and bedroom
- Gourmet kitchen faucet with spray
- Halogen accent lighting
- Hand drafted walnut cabinetry
- Home theater speakers in bedroom
- Icemaker in refrigerator / freezer
- Kool-o-matic exhaust fan in kitchen area
- Leaded beveled glass china cabinet door
- Leather Villa dining salon (4200 series)
- Leather Villa recliner or love seat
- Leather Villa sofa bed
- Leather Villa pilot and co-pilot seats
- Magazine rack and drink holder beside co-pilot seat
- Microphor porcelain toilet
- Microwave/Convection oven
- Plank floor in kitchen area
- Power pilot and co-pilot seats
- Recessed fluorescent lighting
- Recessed Gaggenau 2 burner cooktop
- Shower head slider
- Slide out shelf under kitchen sink
- Solid surface countertops, kitchen and bath
- Solid surface dining table with leaf
- Sony AM/FM/Cassette in dash
- Tip out storage below kitchen sink
- TV antenna with power signal booster
- VCR in front overhead
- VCR control eye in bedroom
- Wainscot walls with vinyl wall covering
- Washer/Dryer connections
- Water pump switch in kitchen
- Window accent lighting
- Wrap-around dash with fold up snack tray
- 20" TV in front overhead
- 13" TV in bedroom
- 20" TV in bedroom (4200 series)
- 40 Channel CB radio
- 60x80 Queen bed

ELECTRICAL

- Freedom 25 Heart Interface inverter (2500 watt)
- 10.0 kw Powertech diesel generator
- 12.0 kw Powertech diesel generator (4200 series)

- 110 volt Powerwatch meter
- 50 amp shoreline connection
- Coach batteries (3) 8D Gel type
- Generator low battery auto-start
- Electric master battery disconnect switch

SAFETY

- Allison transmission retarder
- Back up lights
- Carbon Monoxide detector
- Docking lights (4)
- Entry door assist handle
- Fire extinguisher
- Halogen fog lamps
- LP leak detector
- Non skid surface on roof near ladder
- Polarity meter in utility station
- Smoke detector
- Ronsen sun visors
- 8" tint top of windshield

EXTERIOR FEATURES

- Air hose for tire service
- Air operated entry step
- Carpeted storage bays
- Convenient Utility Station: Hot & cold water faucet, fresh water hook-up, soap dispenser, cable TV & phone connections, paper towel holder, 110v receptacle, easy access dump valves, polarity meter, water pump switch, electric water tank fill switch, 50 amp shoreline connection
- Creation insulated windows
- Door Bell
- Dual Hadley air horns
- Exterior 110v outlet
- Fuel fill - two sides
- Large pass-thru storage bays
- Lighted entry door assist handle
- Lighted storage bays
- MaxGuard 29 Gelcoat exterior finish
- Modular storage drawers (2)
- One piece crowned fiberglass roof
- Parallel (bus style) storage bay doors with keyless remote locks
- Porch light w/ Touch switch
- Ramco remote controlled and heated mirrors with wide angle vision, chrome
- Roof rack and ladder
- Screen door
- Shelf in fresh water bay
- Drawer in LP compartment

- Slide out cargo tray
- TV outlet in storage bay
- Uniwall sidewalls
- Zip Dee patio awning & window awnings

HEATING/COOLING

- Aqua-Hot hydronic heating system
- Comfort Control Center to control A.c and Aqua-Hot
- Ducted Air conditioning with (2) 13,500 BTU roof AC with heat strips (4200 series 3 A/C's)
- 17,250 BTU automotive A/C
- 35,000 BTU automotive heater/def

CONVENIENCE

- Air operated step well cover
- Antenna warning alarm
- Audit 8t8 Systems monitor with Backup Camera, outdoor thermometer and compass
- Cellular phone antenna and connections
- Computerized air leveling system with 12v compressor
- Illuminated dash panels
- Keyless remote locks on entry door and storage bay doors
- Manifold plumbing system
- Smart Wheel steering wheel with headlamp flash, marker lamp flash, cruise control and wiper/washer controls
- Synchronized windshield wipers
- (2) Telephone jacks

1998 U295

Models

MODEL NO	WHEEL BASE	RETAIL
3600	228"	\$374,500
4000	276"	\$405,000
4200		\$495,000
CAI	CENTER AISLE, ISLAND BED	
WTFE	WALK THROUGH BATH, FRONT ENTRY	
CSGI	CURE SIDE GALLEY, ISLAND BED	
WTME	WALK TRHOUGH BATH, MID ENTRY	

Features

WEIGHTS/RATINGS

- GVWR: 32,350 lbs.
- GVWR (4200): 42,000 lbs.
- Front GAWR: 12,350 lbs.
- Rear GAWR: 20,000 lbs.
- Rear GAWR (4200): 21,000 lbs.
- Tag GAWR (4200): 9,000 lbs.
- GCWR: 38,000 lbs.
- GCWR (4200): 48,000 lbs.
- Fresh water capacity: 102 gal.
- Gray water capacity: 110 gal.
- Black water capacity: 54 gal.
- LP Tank: 17.6 gal.
- Fuel capacity: 194 gal.

CHASSIS

- Foretravel Monocoque Chassis
- Engine: Cummins C8 325 h.p. diesel engine
- Allison MD3060 R 6 speed automatic with retarder
- Alcoa aluminum Wheels (6)
- Anti-lock Braking-System
- Cruise control
- Dual Halogen headlamps
- Engine batteries: (2) Optima Gel Type
- Engine block heater
- Full analog instrumentation
- Bilstein shock absorbers
- Power steering
- Radiator coolant recovery system
- Rear axle ratio: 5.13:1
- Remote Start panel in engine compartment
- Rockwell Air disk brakes
- Suspension: 8 bag 100% air ride
- Tires: Michelin 275/80R22.5 PXZA
- Transmission oil cooler
- Racor fuel filter/water separator system
- 160 amp alternator
- 190 amp battery isolator

LIVABILITY

- Bedroom alarm clock
- Bose Companion satellite surround sound system
- Built in safe
- Cedar-lined wardrobes
- Chandelier at dining table
- Concealed cabinet door hinges
- Corian lavatory sink

- Designer accent pillows, sofa and bed
- Designer window treatment w/ day/night shades in living room
- Docking light switch in bedroom
- Dometic refrigerator / freezer with wood inserts
- Drinking water filter
- Ducted air conditioning
- Extra wide co-pilot seat
- Fantastic fan in bath
- Flexsteel sofa/bed
- Flexsteel loveseat or recliner
- Flexsteel pilot and co-pilot seats (leather)
- Floor level accent lights
- Fully lined drapes in bedroom
- Generator switch at dash and bedroom
- Gourmet kitchen faucet with spray
- Halogen accent lighting
- Hand drafted walnut cabinetry
- Leaded beveled glass china cabinet door
- Leather Villa dining salon (4200 series)
- Leather Villa recliner or love seat
- Leather Villa sofa bed
- Leather Villa pilot and co-pilot seats
- Magazine rack and drink holder beside co-pilot seat
- Microphor porcelain toilet
- Microwave/Convection oven
- Plank floor in kitchen area
- Power pilot and co-pilot seats
- Recessed fluorescent lighting
- Recessed Gaggenau 2 burner cooktop
- Shower head slider
- Slide out shelf under kitchen sink
- Solid surface countertops, kitchen and bath
- Solid surface dining table with leaf
- Sony AM/FM/Cassette in dash
- Tip out storage below kitchen sink
- TV antenna with power signal booster
- VCR in front overhead
- VCR control eye in bedroom
- Wainscot walls with vinyl wall covering
- Washer/Dryer connections
- Water pump switch in kitchen
- Window accent lighting
- Wrap around dash with fold up snack tray
- 20" TV in front overhead
- 13" TV in bedroom
- 20" TV in bedroom (4200 series)
- 40 Channel CB radio
- 60x80 Queen bed

ELECTRICAL

- Freedom 25 Heart Interface inverter
- 10.0 kw Powertech diesel generator
- 12.0 kw Powertech diesel generator (4200)
- 110 volt Powerwatch meter
- 50 amp shoreline
- Coach batteries (3) 8D Gel type
- Generator low battery auto start
- Master battery disconnect switch

SAFETY

- Allison transmission retarder
- Back up lights
- Carbon Monoxide detector
- Docking lights (4)
- Entry door assist handle
- Fire extinguisher
- Halogen fog lamps
- LP leak detector
- Non-skid surface on roof near ladder
- Polarity meter in utility station
- Smoke detector
- Ronsen sun visors
- 8" tint - top of windshield

EXTERIOR FEATURES

- Air hose for tire service
- Air operated entry step
- Carpeted storage compartments
- Convenient Utility Station: Fresh water hook-up, 50 amp shoreline connection, hot & cold water faucet, soap dispenser, cable TV & phone connections, paper towel holder, 110v receptacle, easy access dump valves, polarity meter, water pump switch,
- Creation Insulated windows
- Door Bell
- Dual Hadley air horns
- Fuel fill two sides
- Large pass-thru storage bays
- Lighted entry door assist handle
- Lighted storage bays
- MaxGuard 29 Gelcoat exterior finish
- Mud flaps
- One piece crowned storage bay doors
- Parallel (bus-type) storage bay doors with keyless remote locks
- Porch light w/ Touch switch
- PTL entry door with keyless remote lock

- Ramco remote controlled and heated mirrors with wide angle vision, chrome
- Roof rack and ladder
- Screen door
- Shelf in fresh water bay
- Shelf in LP compartment
- Slide out cargo tray
- TV outlet in storage bay
- Uniwall sidewalls
- Zip Dee patio awning & window awnings

HEATING/COOLING

- Aqua-Hot hydronic heating
- Comfort Control Center to control a/c and Aqua-Hot
- Ducted air conditioning with (2) 13,500 BTU roof AC with heat strips (4200 series 3 A/C's)
- Two (2) ducted furnaces with electronic ignition (35,000 BTU front, 16,000 BTU rear)
- 17,250 BTU automotive A/C
- 35,000 BTU automotive heater/def

CONVENIENCE

- Air operated step well cover
- Antenna warning alarm
- Audit 8t8 Systems monitor with Backup Camera, outdoor thermometer and compass
- Cellular phone antenna and connections
- Computerized air leveling system with 12v compressor
- Illuminated dash panels
- Keyless remote locks on entry door and storage bay doors
- Manifold plumbing system
- Map lights for pilot and co-pilot
- Smart Wheel steering wheel with headlamp flash, marker lamp flash, cruise control and wiper/washer controls
- Synchronized windshield wipers
- (2) Telephone jacks

1998 U270

Models

MODEL NO	WHEEL BASE	LENGTH	HEIGHT	WIDTH	INT HEIGHT	RETAIL
3400 U270		34'	11'4"	102"	80"	\$253,500
3600 U270	228"	36'	11'4"	102"	80"	\$259,000
CODE	DESCRIPTION					
WTFE	WALK THROUGH BATH, FRONT ENTRY					
CSGI	CURE SIDE GALLEY, ISLAND BED					

Features

WEIGHTS/RATINGS

- GVWR: 31,000 lbs.
- Front GAWR: 12,000 lbs.
- Rear GAWR: 19,000 lbs.
- GCWR: 36,000 lbs.
- Fresh water capacity: 102 gal.
- Gray water capacity: 110 gal.
- Waste water capacity: 54 gal.
- LP Capacity: 42 gal.
- Fuel capacity: 149 gal.

CHASSIS

- Foretravel monocoque chassis
- Cummins C8.3 325hp diesel engine Allison MD-3060R, 6-speed Transmission retarder
- Alcoa aluminum wheels(4)
- Anti-lock braking system
- Cruise control
- Dual halogen headlamps
- Engine Batteries: (2) Optima gel-type
- Engine block heater
- Full analog instrumentation
- Bilstein shock absorbers (8)
- Power steering
- Radiator coolant recovery system
- Rear axle ratio: 5.13:1
- Remote start in engine compartment
- Rockwell air disc brakes
- Suspension: 8-Bag,100% air
- Tires: Michelin 275/80R22.5 PXZA
- Transmission oil cooler
- Racor fuel filter/water separator
- 130 amp alternator
- 160 amp battery isolator

LIVABILITY

- Beveled mirror inserts in bedroom corner cabinets
- Beveled mirror headboard
- Cedar-lined wardrobe panels
- China cabinet in kitchen
- Closet lights
- Designer accent pillows, sofa and bed
- Designer window treatment with day/night shades in living room
- Drinking water filter

- Drink holders on dash
- Drink holder beside co-pilot seat
- Ducted air conditioning
- Fantastic Fan in bath
- Flexsteel sofa bed
- Flexsteel loveseat (some models)
- Flexsteel recliner (some models)
- Flexsteel pilot & co-pilot seats
- Floor level accent lights
- Fully lined drapes with sheer shades in bedroom
- Generator switch at dash
- Halogen accent lighting
- Hand-crafted oak cabinetry
- Icemaker with wood insert
- Kool-o-Matic exhaust fan in kitchen
- Magazine rack beside co-pilot seat
- Microwave/convection oven
- Norcold refrigerator/freezer with wood inserts
- Plank floor in kitchen area
- Power pilot seat
- Recessed fluorescent lighting
- Recessed 3 burner cooktop
- Sealand porcelain toilet
- Shower head slider
- Solid surface countertops, kitchen and bath
- Solid surface dining table with leaf
- Stainless steel kitchen sink
- Sony® AM/FM/cassette in dash
- TV antenna with signal booster
- VCR in front overhead
- Wainscot walls with vinyl wall covering
- Wardrobe dressing mirror
- Washer/dryer connections
- Water pump switch in kitchen
- Wrap-around dash with fold up snack tray
- 20" TV in front overhead
- 13" TV in bedroom
- 40 channel CB radio
- 60" x 80" Queen bed

ELECTRICAL

- Freedom 20 Heart Interface inverter/chgr.
- 8.0 kw Power Tech diesel generator
- 110v Powerwatch meter
- 50 amp shoreline connection
- Coach batteries: (2) 8d gel type
- Generator low battery auto-start

- Electric master battery disconnect switch
- Trailer wiring

SAFETY

- Allison transmission retarder
- Back-up lights
- Carbon monoxide detector
- Docking lights(4)
- Entry door assist handle
- Fire extinguisher
- Halogen fog lamps
- LP leak detector
- Non skid surface on roof near ladder
- Rosen sunvisors
- Smoke detector
- 8" tint top of windshield

EXTERIOR FEATURES

- Air operated entry step
- Carpeted storage bays
- Convenient utility station: Fresh water hook-up, 50 amp shoreline connection, hot and cold water faucet, soap dispenser, cable TV and phone connections paper towel holder,110v receptacle easy access dump valves
- Creation Insulated windows
- Dual Hadley air horns
- Fuel fill two sides
- Large pass-thru storage bays
- Lighted entry door assist handle
- Lighted storage bays
- MaxGuard 29"gel coat exterior finish
- Mud flaps
- One-piece crowned fiberglass roof
- Lighted entry door assist handle
- Lighted storage bay
- MaxGuard 29 geccoat exterior finish
- Muds flaps
- Porch light
- PTL entry door
- Ramco remote controlled and heated mirrors with wide angle vision
- Roof rack and ladder
- Screen door
- TV outlet in storage bay
- Uniwall sidewalls
- ZipDee patio awning

HEATING/COOLING

- Comfort Control Center® to control A/C and furnace
- Ducted air conditioning with (2) 13,500 BTU roof A/C with electric heat strips
- 40,000 BTU ducted furnace with electronic ignition
- 17,250 BTU automotive air conditioner
- 35,000 BTU automotive heater/defroster

CONVENIENCE

- Air-operated step-well cover
- Antenna warning alarm
- Audit 9T6® Systems Monitor with
- back-up camera
- Computerized air leveling system with
- auxiliary 12v air compressor
- Illuminated dash panels
- Manifold plumbing system
- Map lights for pilot and co-pilot
- Smart Wheel' *steering wheel with* headlamp flash, marker lamp flash, cruise
- control and wiper/washer controls
- Synchronized windshield wipers
- Telephone jack in living area
- 10 gal. 3-way water heater

From:

<https://wiki.foreforums.com/> - **ForeForums Foretravel Motorcoach Wiki**

Permanent link:

https://wiki.foreforums.com/doku.php?id=through_the_years:1998

Last update: **2021/03/10 12:31**

