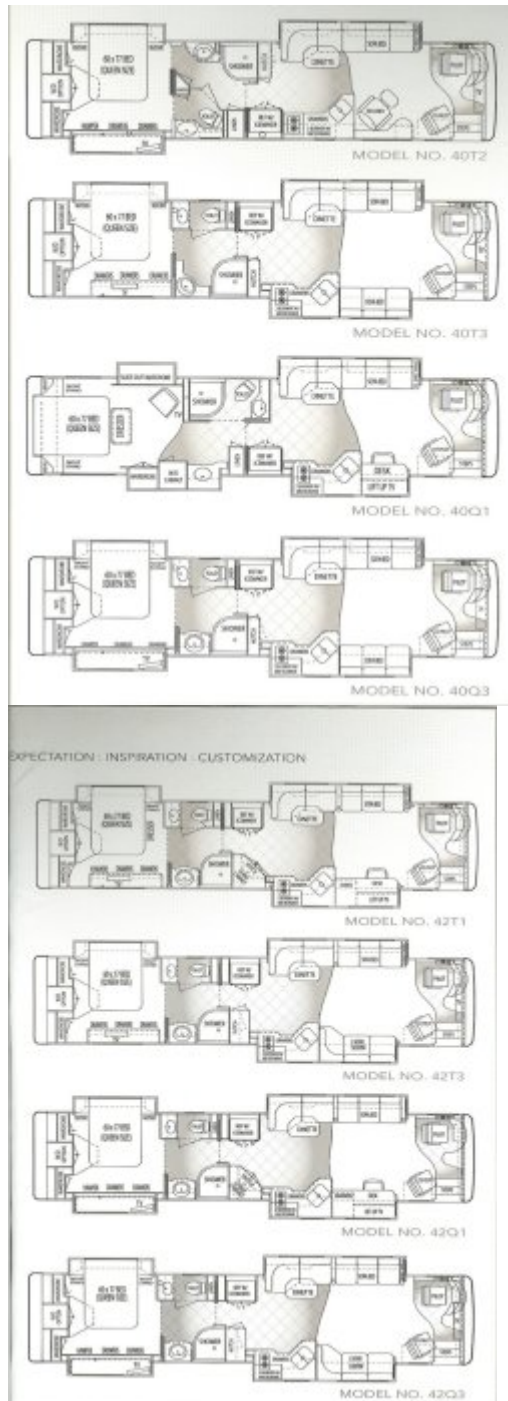


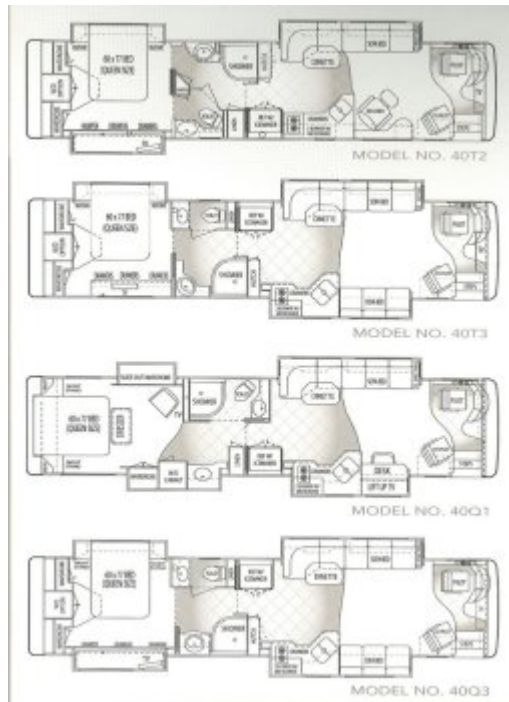
Media

Photos

Brochures

Safety Features All coaches built to RVIA specifications GFI protected circuits Polarity reverse/protection - 120v Back-up camera (optional) Daytime running lights Frequency flasher lights Fire extinguishers (2) High-mounted additional LED brake light and turn signals on rear cap Interior exit assist handle Lighted entry door assist handle LP leak detector Smoke detector Carbon monoxide detector Non-slip surface on rear stair treads Driver and passenger 3-point seat belts and shoulder harnesses		34' & 36' GVWR 34,000 lbs GVWR 31,000 lbs 40' GVWR 44,000 lbs GVWR 60,000 lbs	
Heating/Cooling/Electrical Coach batteries: 4d Thermal lead-acid (12) with heat cables Comfort control center for AC and heater Ducted air conditioning: Dometic® two 13,500 BTU roof AC (2) on 34' and 36', 15,000 BTU living room roof AC on 40', 13,500 BTU on rear of 40' Hydrex Hot® hydronic heating Electric battery disconnect with LED indicator Electrical surge-suppression system Low-battery generator auto start Kohler® RS 2000w inverter/charger 8-flow Power Tech diesel generator in quiet box 50-amp shoreline connection 20,000 BTU automatic air conditioner 52,000 BTU automatic heater/dehumidifier		Popular Options Comfort package: Electric utility seats, LP connection, black and grey flush kits, built-in vacuum cleaner HD satellite package: HD satellite, 1 HD receiver, 32" LCD TV in living room Deluxer entertainment package: 32" LCD TV on swing-out arm, AM-FM-CD with speakers wired to TV 32" LCD TV in living room Satellite antenna - TracStar® SW360 in Motion Satellite receiver Satellite radio GPS navigation VCR AM/FM DVD/CD bedroom stereo 6 Disc CD player/charger at dash Satellite radio (XM® or SIRIUS® requires subscription) Silverado VMS 400™ Shower footrest CE Arkamark® Queen Security system Jayco Bed™ Solar battery charger Wash/dryer combination Guard® electric window awnings 100 lb freezer Chrome triple-head mirrors Absorber transmission retarder 10kw Power Tech generator 12kw Power Tech generator 15,000 BTU roof AC on 34' or 36' Clear shield paint protection below windshield Keyless remote lock and storage doors Hardwired CB radio with weather band Rope lighting in ceiling recesses	
Weight Ratings and Capacities Available lengths 34', 36', 40' Exterior height 11' 6" (2") Exterior width 8' 6" Fresh water capacity 85 gal Gray water capacity 100 gal Waste water capacity 50 gal LP capacity 17.7 gal Fuel capacity 150 gal			
Chassis Features Forward chassis and suspension Cummins® ISL® 35-400 HP with engine brake Allison® transmission M11 3000 Air-ride brakes on all wheels with ABS and automatic slack adjusters Alloy aluminum wheels with Dura-Brake® protection (4 on 34' and 36', 6 on 40') Anti-lock braking system Air-quick connect in storage bay Automatic axle lock control Auxiliary 12v air compressor Electronic shock absorbers Computerized air-braking system Cruise control with dash indicator light 3.0L I6 engine features Front tow retrieval pattern Power steering Carrier® fuel filter/water separator Fuel/air control recovery system Rear axle ratio 5.78:1 Suspension: Freedom® air springs, 8 bags on 34' or 36'; 12 bags on 40'; 100% air ride, self-adjust mounted on all models (4 spring bags on 40') Tires: 295/80R22.5 Transmission oil cooler 140-amp alternator 280-amp battery isolator 15,000 lb rated receiver hitch		Slide-out topgens above all slide-outs Aluminum ladder Marker lights Lighted entry door with assist handle Park light PTU entry door with assist and lock guard Membrac® plumbing system Mud flaps Trailer wiring TV socket and 12v outlet in storage bay Rack double head mirrors Storage bay lights Electric TV antenna	
Exterior Features Air-operated entry step Auxiliary rear brake lights and turn signals Caped storage bay Consolidated components bay Convenient utility station Fresh water connection, 50-amp Phone connection, hot and cold Sewer, faucet, soap dispenser, cable TV and phone connection, paper towel holder, 15lb receptacle Dual halogen head lamps with turn signals Fiberglass roof (one piece) Fuel fill on back side of coach Hidden air lines Dual-pane insulated windows Painted exterior graphics with full body gloss and clear coat finish Guard® dual mounted, automatic gate opening		Dash and Cockpit Features AM/FM radio with CD player (Satellite radio available) Air tank switch Back-up monitor Back-to-back dash gauges Battery boost switch Cell phone connection and dual band antenna Cruise control with dash indicator light Driver drink holder In-dash driver information Center Electric window/privacy shade Mirror hand at top of windshield Generator start/stop switch Automotive compass and outdoor temperature system Illuminated dash panel Pilot and cockpit map lights Slide-out drink holder and snack tray Illuminated floor (thru) steering wheel Synchro-mesh handsheld mirrors Tilt and telescoping steering wheel Truck-pull transmission gear selector Villet® leather 12-way power pilot seat with electric footrest 12v accessory receptacle Tire blowing in entry way Dash-AC controls for cockpit	
Appliances/Electronics/Lighting/Audio-Visual Stationary TV antenna with signal booster 24" CRT TV in living room Home theater system in living room with surround speakers (including AM/FM, DVD/CD)		Floor-level accent lights Halogen adjustable reading lamps in living room and bedroom Inverter/Power window panel in living room area Inboard heater/2 2-burner cook-top with electronic ignition 120V Dometic® side-by-side 12cu. ft. refrigerator on 36' and 40', 10cu. ft. on 34' Microwave/convection oven Wash/dryer combination Interior Usability Features Air-operated step-up cover with dual controls Tire-flaring kitchen and bath Color-coordinated throw pillows (only on 36') Designer window treatments with electric shades Designer kitchen faucet with pull-out sprayer Drinking water filter Leather chair with footrest Electric furnace (built-in bath and toilet room, equipped with automatic closing air vents) Handcrafted custom cabinets All slide-out rooms flush with sidewalls when retracted Pneumatic seat on all slide-out rooms Magazine rack and drink holder at re-pilot seat Kitchen pantry Solid surface laundry sink Chrome toilet Brushed nickel cabinet hardware Shower head slider Solid surface countertops (kitchen and bath) Solid surface dining (floor plan dependent) Solid surface dinner table with leaf Solid surface nightstand tops Stainless steel kitchen sink with covers Storage under entry step Telephone jack in living area and bedroom Water pump switch in kitchen and bath Queen bed 60" x 77" Floor-to-ceiling wallpaper with matching border and chair rail Skylight above shower Consolidated door hinges Tapered storage below kitchen sink	





EXTERIOR COLORS & GRAPHICS



EXTERIOR COLORS & GRAPHICS

064 COLORS : A GRAPHICS



065 COLORS : A GRAPHICS



064 COLORS : B GRAPHICS



065 COLORS : B GRAPHICS



064 COLORS : C GRAPHICS



065 COLORS : C GRAPHICS

Specifications

2006 Phenix

Features

CODE	DESCRIPTION
40T2 / 42T2	TRIPLE SLIDE, 2 in REAR
40T3 / 40T3	TRIPLE SLIDE, 2 in FRONT
40Q1 / 40Q1	QUAD SLIDE, ISLAND BED
40Q3 / 40Q3	QUAD SLIDE, BED & CLOSET SLIDES

CHASSIS

- Foretravel chassis and superstructure
- Cummins™ ISM 02 500 HP electronic diesel engine
- Allison 4000 MHR 6-speed transmission
- Allison dual-actuated transmission retarder
- Anti-lock braking system, air disc brakes on all wheels
- Air hose for tire service
- Alcoa aluminum wheels with Dura-Bright protection (6)
- Automatic Traction Control (ATC)
- Auxiliary 12v air compressor
- Computerized air-leveling system
- Electronic cruise control with dash indicator light
- 3-AGM engine batteries
- Front tow retrieval points
- Koni shock absorbers (8) on 440 and 442
- 10,000 lb GAWR lifting tag axle
- Power steering

- Fuel system with air and water purge
- Radiator coolant recovery system
- Rear axle ratio: 4.33:1
- Remote battery jumper terminals
- Suspension: Firestone™ airbags, 100% air ride, 10-bags outboard mounted
- Tires: 295/80R22.5
- Transmission oil cooler
- 200-amp alternator (270-amp on Cummins ISX engine)
- 200-amp battery isolator (300-amp on Cummins ISX engine)
- 18,000 lb rated receiver hitch

COCKPIT FEATURES

- AM/FM radio with 6-disc CD player (Satellite radio capable)
- Air tank switch
- Back-up monitor
- Back-lit analogue dash gauges
- Battery boost switch
- Cell phone connection and dual band antenna
- Cruise control with dash indicator light
- Driver drink holder
- In-dash Driver Information Center
- Electric windshield/privacy shades
- Generator start/stop switch with auto voltage and temperature start system
- Hand held CB radio with weather band
- Illuminated dash panels
- Pilot and co-pilot map lights
- Slide-out drink holder and snack tray
- Illuminated Smart Wheel steering wheel
- Synchronized windshield wipers
- Tilt and telescoping steering wheel
- Touch pad transmission gear selector
- Villa 6-way power pilot seat
- Villa 6-way power co-pilot seat with electric footrest
- 12v accessory receptacle
- One-piece windshield with shade band
- Automotive compass and outdoor temperature display
- Dash AC controls for co-pilot

APPLIANCES/ELECTRONICS/LIGHTING

- Whole house audio/video package: (All systems HD compatible)
- 32" LCD TV in living room area
- 20" LCD TV in bedroom
- Universal Remote Control MX 850
- Integra receiver, Integra CD/DVD player
- Flush-mounted speakers
- Powered subwoofer

- Stationary TV antenna with signal booster
- Accent lighting under counters, behind valances and in ceiling recesses
- Dometic NDA-1402-ID BSF 14cu. ft. refrigerator/freezer with in-door icemaker dispenser
- Floor-level accent lights
- G.E. Advantium microwave oven (black)
- Halogen accent lighting
- Halogen adjustable reading lamps in bedroom
- Silverleaf Total Coach™ system monitor
- Multiplex lighting control system
- Electric cook-top
- Washer/dryer connections

LIVABILITY

- Dometic air filtration system
- Air-operated step-well cover with dual controls
- Aqua-Hot hydronic heating and hot water system
- Bedroom alarm clock
- Built-in safe with electronic push-button lock
- Tile floor (kitchen, bath and driver/passenger area)
- Kitchen china cabinet (floor plan dependent)
- Color-coordinated throw pillows (sofa and bed)
- Concealed cabinet door hinges
- Designer kitchen faucet with pull-out sprayer
- Electric window shades (except on slide-out end windows)
- Drinking water filter
- Chair and ottoman (floor plan dependent)
- Electric Fantastic Fan in bath and toilet room, equipped with automatic closing rain sensor
- Generator start/stop switch in bedroom
- Handcrafted maple, walnut or cherry cabinetry
- All slide-out rooms flush with sidewalls when retracted
- Pneumatic seal on all slide-out rooms
- Magazine rack and drink holder at co-pilot seat
- Kitchen pantry
- China toilet
- Brushed nickel cabinet hardware
- Shower head slider
- Floor-to-ceiling wallpaper with chair rail
- Engineered stone countertops (kitchen, bath and living room)
- Engineered stone desktop (floor plan dependent)
- Engineered stone motorized dinette table (floor plan dependent)
- Solid surface entry steps with storage below
- Engineered stone nightstand and dresser tops
- Solid surface shower walls with soap and shampoo holder
- Stainless steel 2-compartment kitchen sink with flush-mounted covers
- Solid surface lavatory sink
- Telephone jack in living area and bedroom
- Tip-out storage below kitchen sink

- Water fill switch with automatic shut-off
- Water pump switch in kitchen, bath and utility station
- Queen bed (60"x 77")
- Roof skylight
- Self-closing drawer slides

HEATING/COOLING/ELECTRICAL

- Aqua-Hot hydronic heating and hot water system
- Coach batteries: 8d gel with heat probe (3)
- Comfort Control Center for roof AC's
- Aqua-Hot and auto generator start
- Ducted air conditioning: Dometic 15,000 BTU roof
- AC with 2 heat pumps (3 units on 442)
- Electric surge-suppression system
- Low-battery generator auto-start
- Master battery disconnect switch
- Xantrex™ 3000w inverter/charger
- 10kw Power Tech diesel generator in quiet box (12.0kw on 442)
- 50-amp shoreline connection
- 28,000 BTU automotive air conditioner
- 52,000 BTU automotive heater/defroster

SAFETY

- All coaches built to RVIA specifications
- Allison transmission retarder with dual actuators
- Back-up camera (color)
- Carbon monoxide detector
- Smoke detector
- LP leak detector
- GFI protected circuits
- Chrome Ramco triple-head remote-controlled, heated mirrors with blinking LED indicators
- Daytime running lights
- Docking lights (4)
- Emergency flasher lights
- Fire extinguishers (2)
- Fog lights
- Heat probe on coach batteries
- High-mounted additional
- LED brake light and turn signals
- Interior exit-assist handle
- Lighted entry-assist handle
- Egress window
- Driver and passenger three-point seat belts and shoulder harnesses
- Deadbolt lock on entry door

EXTERIOR FEATURES

- New design for front and rear end caps
- Air-Operated entry step
- Auxiliary rear brake lights and turn signals
- Carpeted storage bay
- Consolidated components bay
- Convenient utility station: Electric fresh water hose reel, electric 50-amp shoreline reel, hot and cold water faucet, soap dispenser, cable TV and phone connection, paper towel holder, 110v receptacle, water pump switch, water fill switch with automatic shut off
- Fiberglass roof (one piece)
- Fuel fill on both sides of coach
- Flush kits on black and grey tanks
- Integrated fairing on front and rear end caps with one electric Girard roof-mounted automatic patio awning and three awning shells
- Hidden air horns
- Peninsula™ dark grey tinted and insulated windows
- Joey Bed™
- Increased height in storage door openings
- Top-hinged storage doors
- Keyless remote locks on entry door and storage bays
- Mounted touch-pad on outside sidewall to unlock entry door
- LED marker lights
- PTL entry door with screen and kick guard
- Porch light
- Door bell
- LP quick connect
- Manibloc™ plumbing system
- Rear mud flap with brushed stainless accent
- Painted exterior graphics with full body paint and double clear-coat finish
- Storage bay lights
- Trailer wiring
- TV outlet and 12v outlet in storage bay
- Roof AC drains
- Electric TV antenna

2006 Nimbus

Features

WEIGHTS/RATINGS

- GVWR: 44,800 (34' 36" 34,800 lbs.)
- GCWR: 60,000 (34' 36" 51,000 lbs.)
- Fresh water capacity: 95 gal.
- Gray water capacity: 100 gal.
- Black water capacity: 50 gal.

- LP Tank: 17.7 gal.
- Fuel capacity: 150 gal.

CHASSIS

- Foretravel chassis and superstructure
- Cummins ISL® 05-400 HP with engine brake
- Allison transmission MH 3000
- Air disc brakes on all wheels with ABS and automatic slack adjusters
- Alcoa aluminum wheels with Dura-Bright® protection (4 on 34' and 36', 6 on 40')
- Anti-lock braking system
- Air quick connect in storage bay
- Automatic traction control
- Auxiliary 12v air compressor
- Bilstein® shock absorbers
- Computerized air-leveling system
- Cruise control with dash indicator light
- 3-AGM engine batteries
- Front tow retrieval points
- Power steering
- Cummins™ fuel filter/water separator
- Radiator coolant recovery system
- Rear axle ratio: 4.78:1
- Suspension: Firestone™ air springs, 8 bags on 34' or 36'; 10 bags on 40'; 100% air ride, outboard-mounted on all models (Lifting tag axle on 40')
- Tires: 295/80R22.5
- Transmission oil cooler
- 160-amp alternator
- 200-amp battery isolator
- 15,000 lb rated receiver hitch

COCKPIT FEATURES

- AM/FM radio with CD player (Satellite radio capable)
- Air tank switch
- Back-up monitor
- Back-lit analogue dash gauges
- Battery boost switch
- Cell phone connection and dual band antenna
- Cruise control with dash indicator light
- Driver drink holder
- In-dash driver Information Center
- Electric windshield/privacy shade
- Shade band at top of windshield
- Generator start/stop switch
- Automotive compass and outdoor temperature system
- Illuminated dash panel
- Pilot and co-pilot map lights

- Slide-out drink holder and snack tray
- Illuminated Smart Wheel® steering wheel
- Synchronized windshield wipers
- Tilt and telescoping steering wheel
- Touch-pad transmission gear selector
- Villa* leather 6-way power pilot seat
- Villa* leather 6-way power co-pilot seat with electric footrest
- 12v accessory receptacle
- Tile flooring in entry way
- Dash AC controls for co-pilot

APPLIANCES/ELECTRONICS/LIGHTING

- Audio-Visual
- Stationary TV antenna with signal booster
- 24" CRT TV in living room
- Home theater system in living room with recessed speakers (including AM/FM, DVD/CD)
- Floor-level accent lights
- Halogen adjustable reading lamps in living room and bedroom
- Inverter/Power monitor panel in living room area
- Recessed Seaward® 2-burner cook top with electronic ignition
- 1292 Dometic® side-by-side 12cu. ft. refrigerator on 36' and 40'; 10cu. ft. on 34'
- Microwave/convection oven
- Washer/dryer connections

LIVABILITY

- Air-operated step-well cover with dual controls
- Tile flooring (kitchen and bath)
- Color-coordinated throw pillows (sofa and bed)
- Designer window treatment with day/night shades
- Designer kitchen faucet with pull-out sprayer
- Drinking water filter
- Leather chair with footrest
- Electric Fantastic Fan® in bath and toilet room, equipped with automatic closing rain sensor
- Handcrafted stained cabinetry
- All slide-out rooms flush with sidewalls when retracted
- Pneumatic seal on all slide-out rooms
- Magazine rack and drink holder at co-pilot seat
- Kitchen pantry
- Solid surface lavatory sink
- China toilet
- Brushed nickel cabinet hardware
- Shower head slider
- Solid surface countertops (kitchen and bath)
- Solid surface desktop (floor plan dependent)
- Solid surface dinette table with leaf
- Solid surface nightstand tops

- Stainless steel kitchen sink with covers
- Storage under entry step
- Telephone jack in living area and bedroom
- Water pump switch in kitchen and bath
- Queen bed (60" x 77')
- Floor-to-ceiling wallpaper with matching border and chair rail
- Skylight above shower
- Concealed door hinges
- Tip-out storage below kitchen sink

HEATING/COOLING/ELECTRICAL

- Coach batteries: 8D Thermoil lead-acid (2) with heat probes
- Comfort control center for AC and heater
- Ducted air conditioning: Dometic® two 13,500 BTU roof AC (2) on 34' and 36', 15,000 BTU living room roof AC on 40', 13,500 BTU on rear of 40'
- Hydro-Hot® hydronic heating
- Electric battery disconnect with LED indicator
- Electrical surge-suppression system
- Low-battery generator auto-start
- Xantrex RS 2000w inverter/charger
- 8kw Power Tech diesel generator in quiet box
- 50 amp shoreline connection
- 28,000 BTU automotive air conditioner
- 52,000 BTU automotive heater/defroster

SAFETY

- All coaches built to RVIA specifications
- GFI protected circuits
- Polarity meter/monitor - 120v
- Back-up camera (color)
- Daytime running lights
- Emergency flasher lights
- Fire extinguishers (2)
- High-mounted additional LED brake light and turn signals on rear cap
- Interior exit-assist handle
- Lighted entry-door assist handle
- LP leak detector
- Smoke detector
- Carbon monoxide detector
- Non-skid surface on roof near ladder
- Driver and passenger 3-point seat belts and shoulder harnesses

EXTERIOR FEATURES

- Air-operated entry step
- Auxiliary rear brake lights and turn signals

- Carpeted storage bays
- Consolidated components bay
- Convenient utility station: Fresh water connection, 50-amp shoreline connection, hot and cold water faucet, soap dispenser, cable TV and phone connection, paper towel holder, 110v receptacle
- Dual halogen head lamps with turn signals
- Fiberglass roof (one-piece)
- Fuel fill on both sides of coach
- Hidden air horns
- Dual-pane insulated windows
- Painted exterior graphics with full body paint and clear coat finish
- Girard roof-mounted, automatic patio awning
- Slide-out toppers above all slide-outs
- Aluminum ladder
- Marker lights
- Lighted entry door with assist handle
- Porch light
- PTL® entry door with screen and kick guard
- Manibloc™ plumbing system
- Mud flaps
- Trailer wiring
- TV outlet and 12v outlet in storage bay
- Black double-head mirrors
- Storage bay lights
- Electric TV antenna

OPTIONS

- Comfort package: Electric utility reels, LP connection, black and grey flush kits, built-in vacuum cleaner
- HD satellite package: 1 ID satellite, 1 HD receiver, 32" LCD TV in living room
- Outdoor entertainment package: 32" LCD TV on swing-out arm, AM-FM-CD with speakers wired to TV
- 32" LCD TV in living room
- Satellite antenna - TracStar® SV-360 In-Motion
- Satellite receiver
- Satellite radio
- GPS navigation
- VCR
- AM/FM DVD/CD bedroom stereo
- 6-Disc CD player/changer at dash
- Satellite radio (XM or SIRIUS requires subscription)
- Silverleaf VMS400™
- Shower footrest
- GE Advantium® oven
- Security system
- Joey Bed
- Solar battery charger
- Washer/dryer combination

- Girard electric window awnings
- 100 lb Freezer
- Chrome triple-head mirrors
- Allison transmission retarder
- IOkw Power Tech generator
- 12kw Power Tech generator
- 15,000 BTU roof AC on 34'or 36
- Clear shield paint protection below windshield
- Keyless remote locks on storage doors
- Hand held CB radio with weather band
- Rope lighting in ceiling recesses

From:

<https://wiki.foreforums.com/> - **ForeForums Foretravel Motorcoach Wiki**

Permanent link:

https://wiki.foreforums.com/doku.php?id=through_the_years:2006

Last update: **2021/03/10 12:31**

