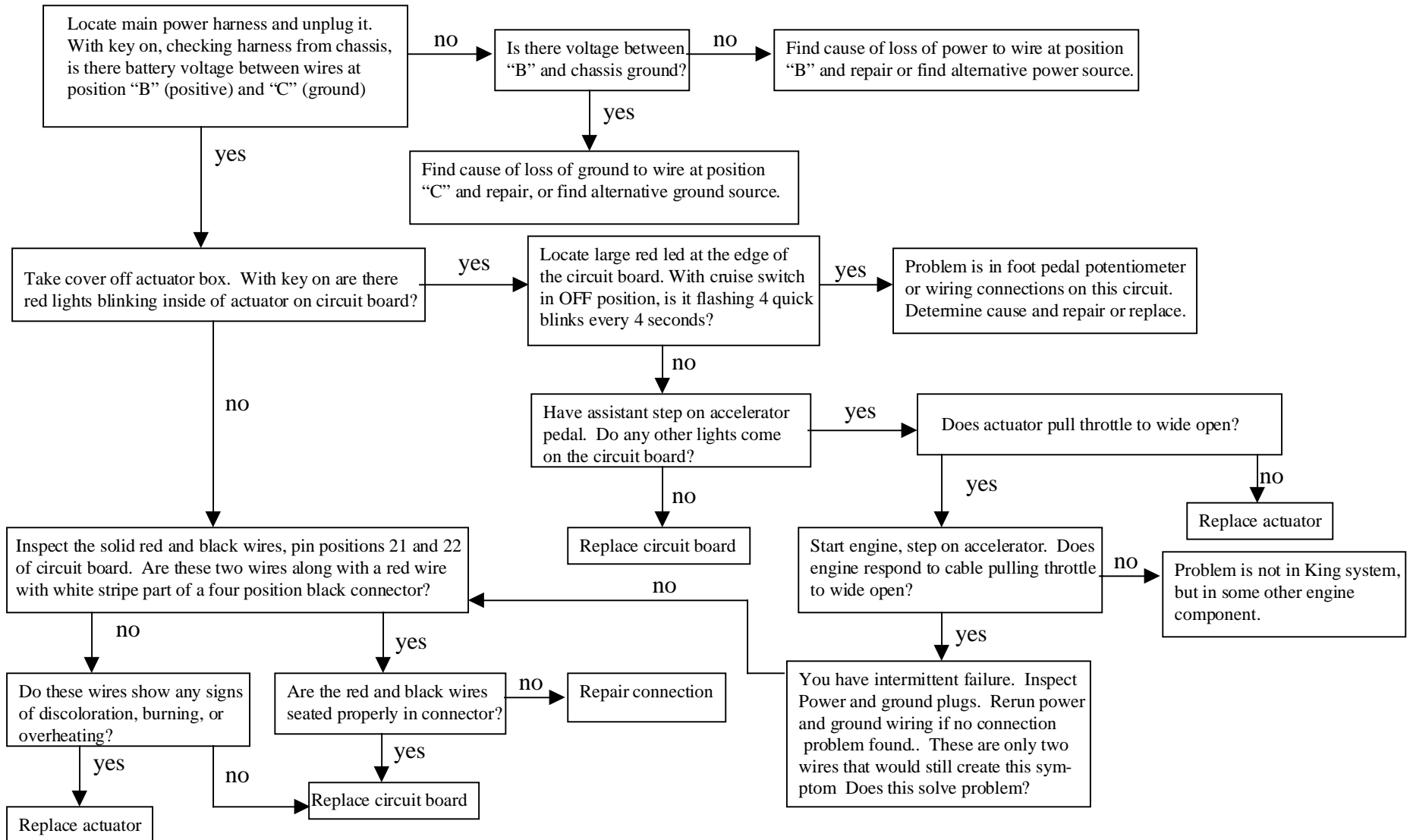


DIAGNOSTIC CHART

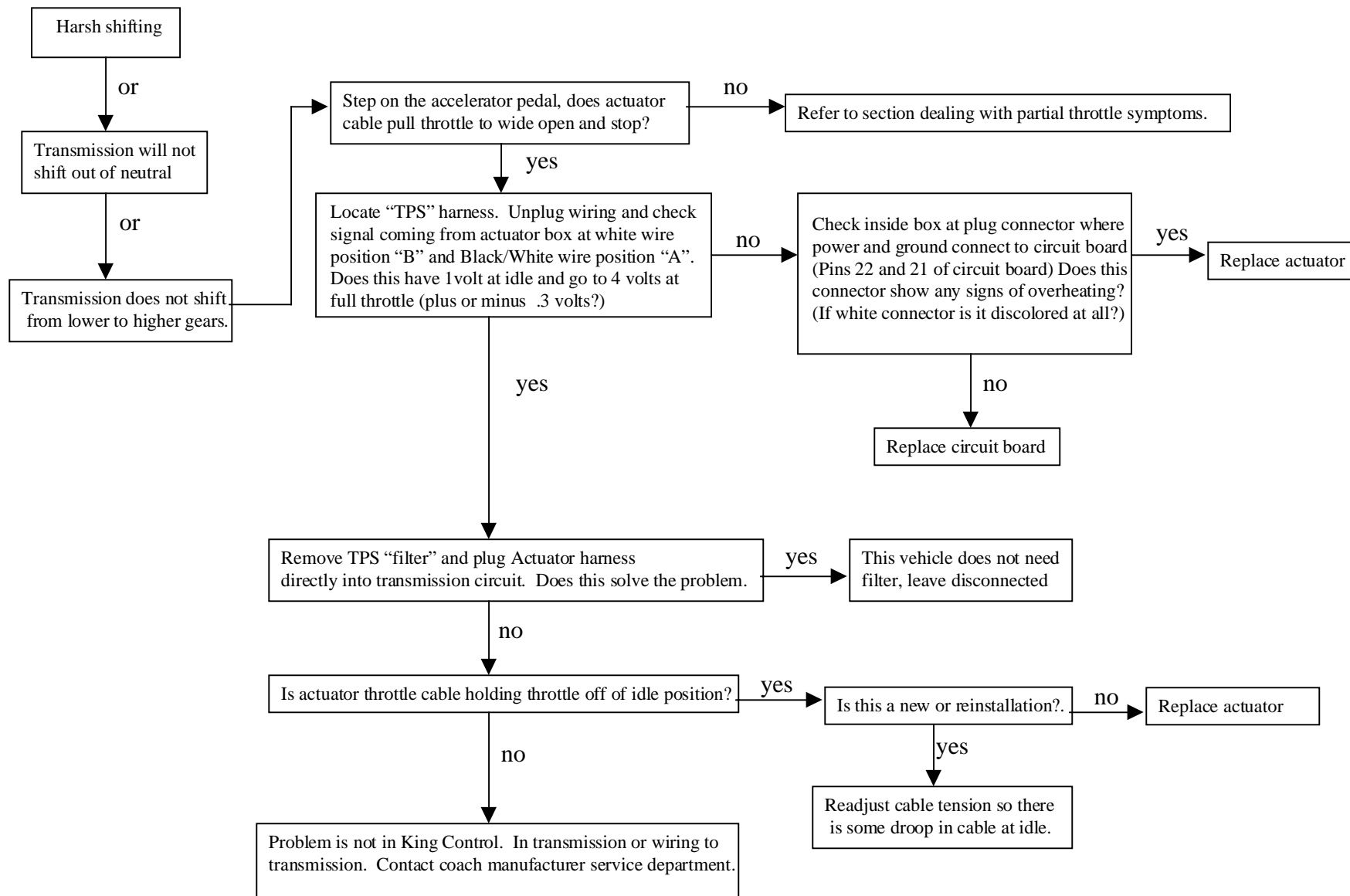
KC 2600 THROTTLE SYSTEM

MONACO AND FORETRAVEL

SYMPTOM: NO THROTTLE, NO CRUISE, NO FAST IDLE. (For partial throttle symptoms, see next section)

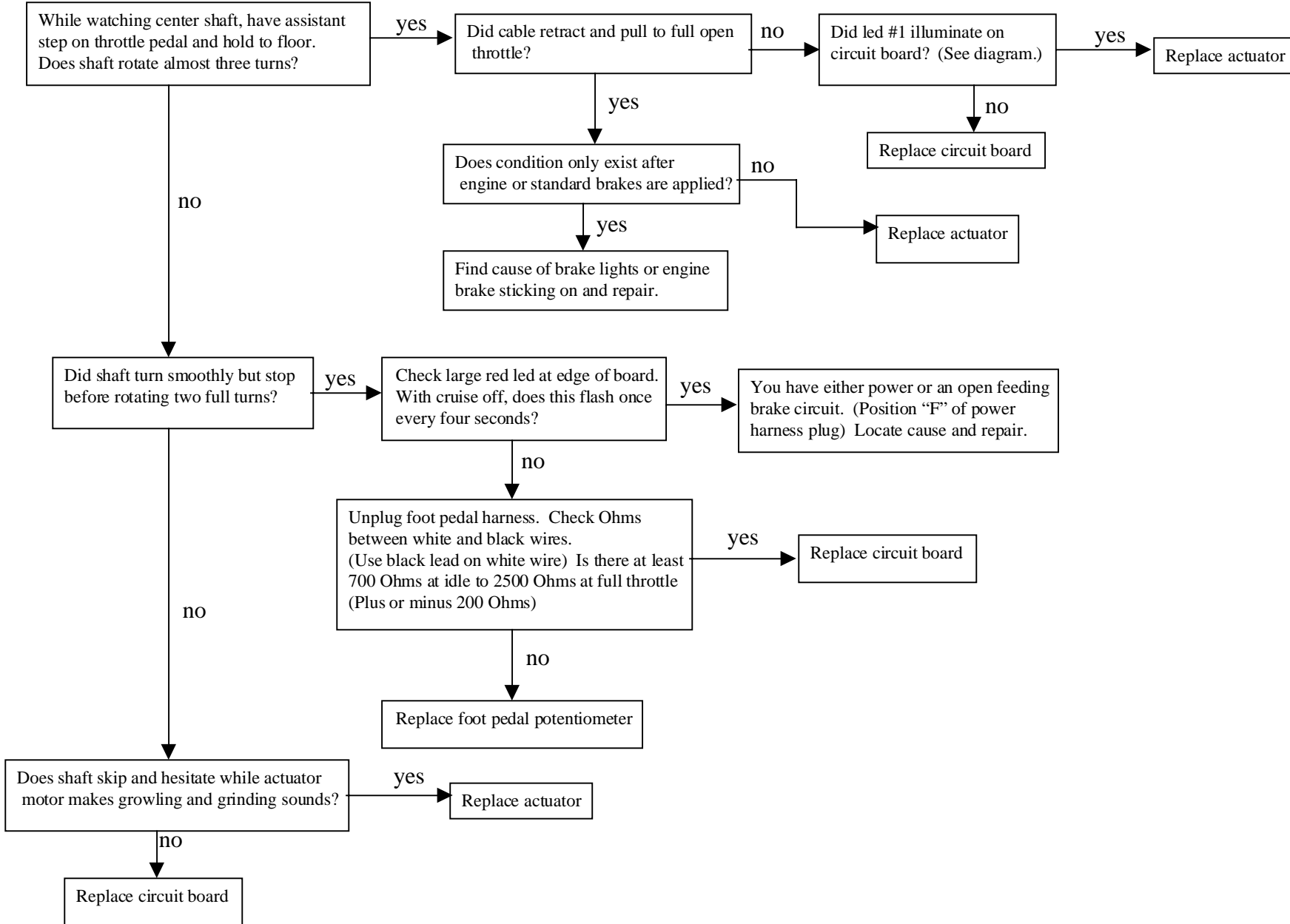


**SYMPTOM: TRANSMISSION TPS PROBLEMS: WON'T SHIFT INTO GEAR,
WILL NOT SHIFT FROM LOWER TO HIGHER GEARS, HARSH SHIFTING**



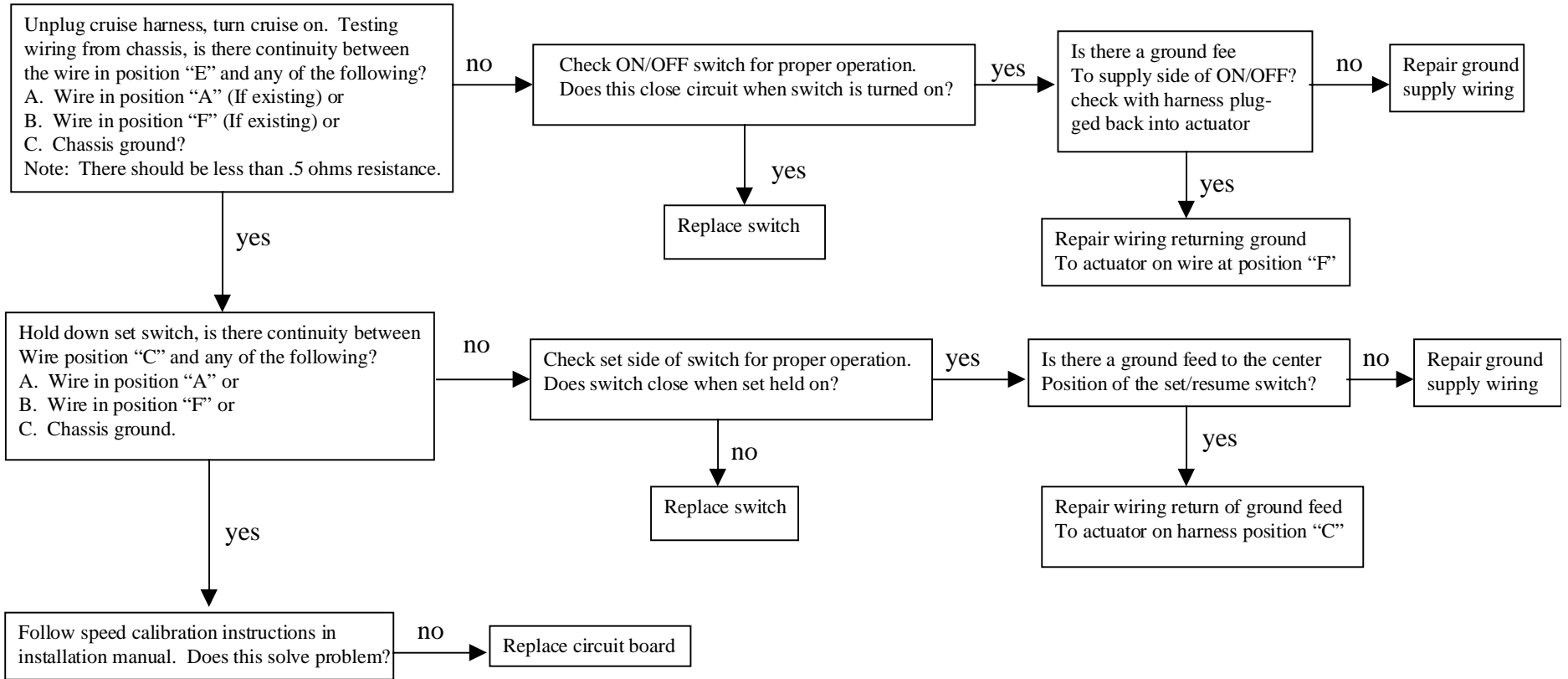
SYMPTOM: STEPPING ON FOOT PEDAL ONLY GIVES PARTIAL THROTTLE

Remove cover from King Controls box, turn on key but do not start vehicle.
 Locate circular component with pin through center shaft.

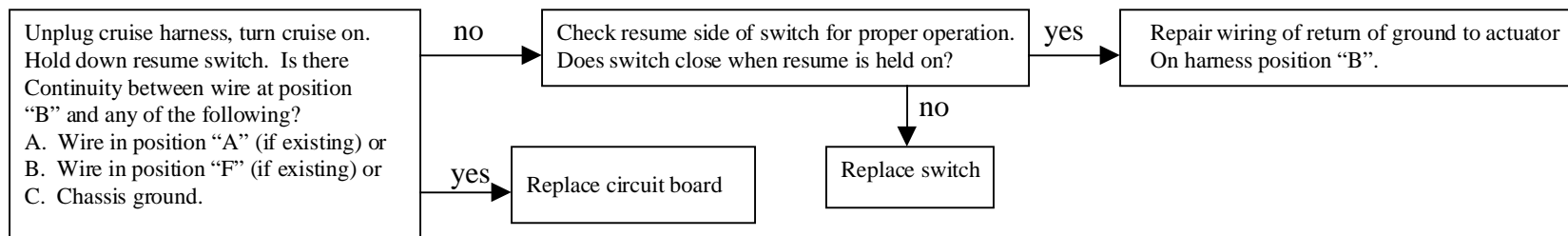


SYMPTOM: THROTTLE WORKS,BUT VEHICLE HAS CRUISE PROBLEMS

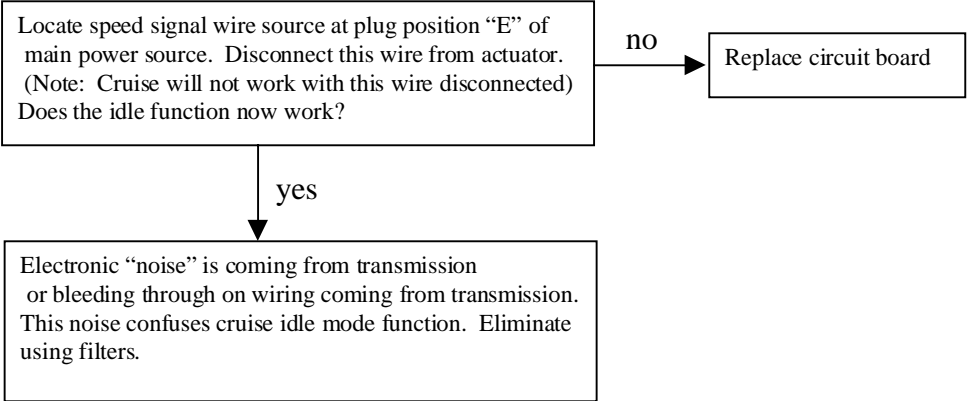
A: CRUISE WILL NOT SET AND DOES NOT ACTIVATE IN IDLE MODE:



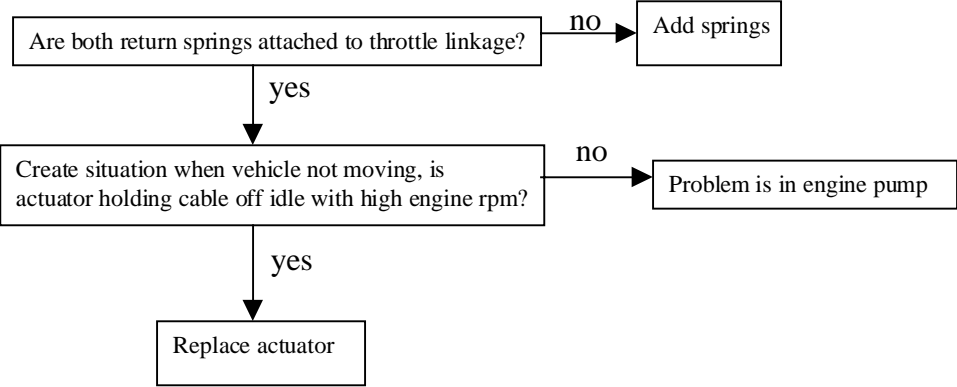
B. CRUISE SETS, BUT WILL NOT RESUME



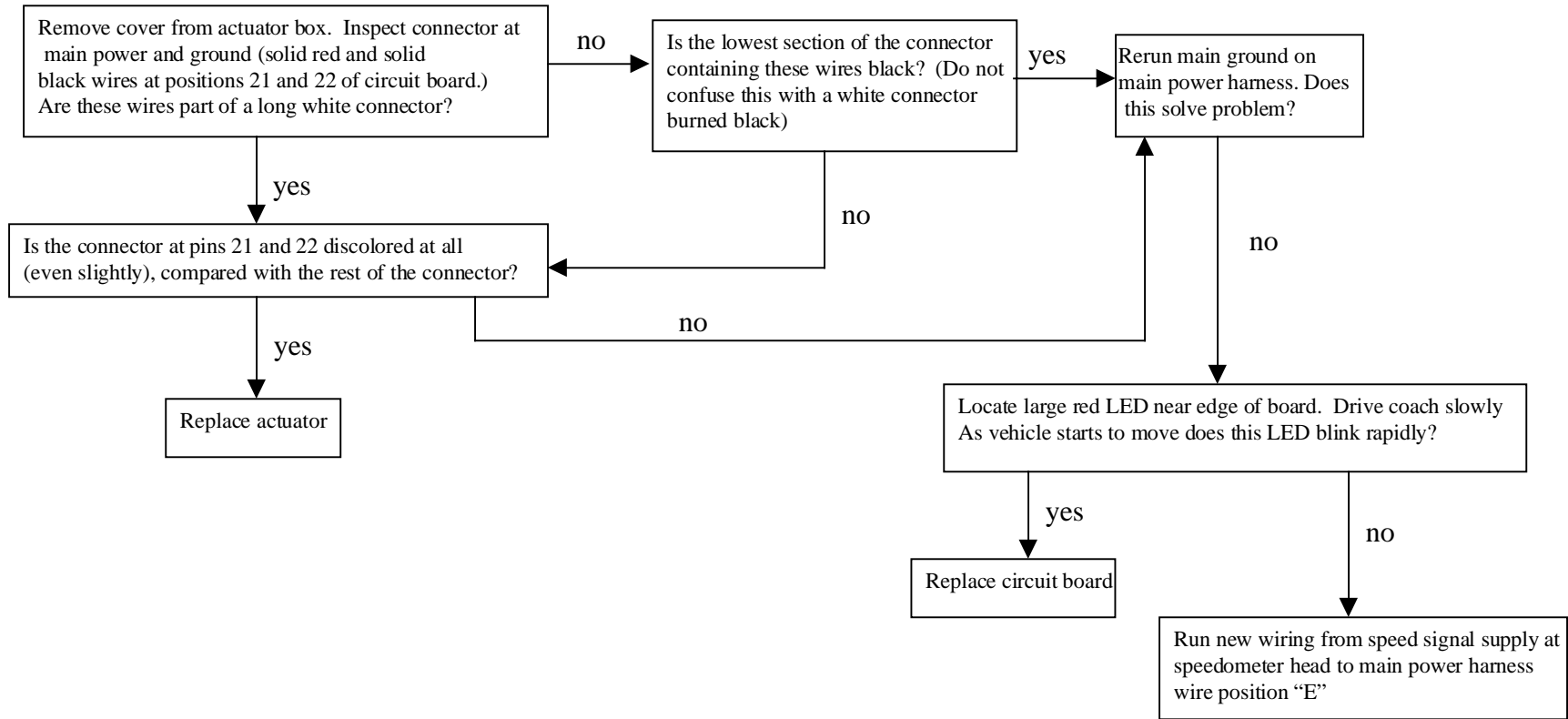
SYMPTOM: IDLE MODE WILL NOT SET OR HOLD, CRUISE WORKS FINE.



SYMPTOM: THROTTLE STICKS OFF IDLE



SYMPTOM: CRUISE SURGES OR BOOST FLUCTUATES OR OVER ACCELERATES WHEN IN CRUISE MODE.



SYMPTOM: CRUISE WORKS IN IDLE MODE BUT WILL NOT SET GOING DOWN ROAD

