



(On I-80, Exit 267 South) 2096 Moscow Road, Moscow, Iowa 52760

Phone: (800)321-3494 or (563)724-3396 Fax: (563)724-3408 Internet: www.hwhcorp.com

## PRODUCT/SERVICE BULLETIN

**ISSUE DATE:** February 15, 1993

**TO:** All O.E.M. Manufacturers and Installers

**FROM:** HWH Corporation

**RE:** Level Sensing Unit

---

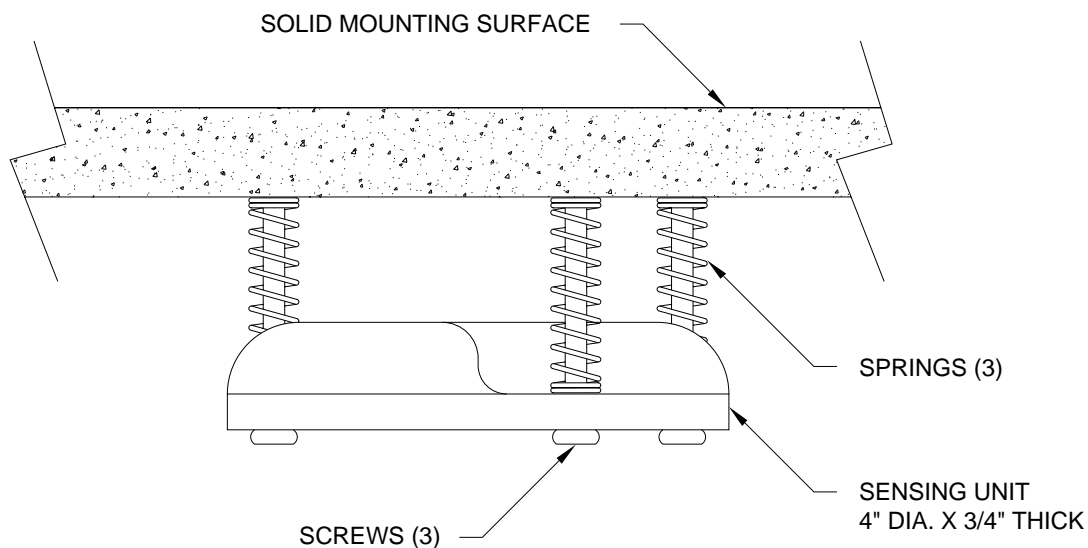
### LEVEL SENSING UNIT

**NOTE:** The sensing unit has an accuracy tolerance of +/- 1" side to side and +/- 5.4" front to rear on a 36' coach.

If it is determined that the sensing unit needs to be adjusted, contact parts and service for authorization.

The correct method for adjusting the sensor is as follows:

First, level the coach by placing a 24" level in the center of the coach on the floor. With the coach level, adjust the sensing unit until all yellow lights are out. This is done by drawing up or backing out the sensing unit screws. If a front light is on, adjust the front screw. If a side light is on, adjust the side screw. If a rear light is on, adjust the rear screws. One or more screws may have to be adjusted to turn the yellow lights out. After adjustment has been made, pull down on the sensing unit to make sure that the unit is bottomed out on the screw heads. Check to make sure all yellow lights are out. If not, readjust. Rock the coach and recheck for yellow lights. Readjust if needed.



Please contact HWH Corporation at (800) 321-3494 for technical advice or assistance.

**MI95.43**  
**30MAR01**