

# Foretravel, inc.

MOTORHOMES OF DISTINCTION

## Grand Villa FRONT ENGINE MODELS

MODEL NO*	WHEEL BASE	PRICE
GRANDVILLA 2900	190"	\$109,500.00
OPTIONAL Cummins 5.9 Diesel 190 h.p.		\$115,500.00

MODEL NO*	WHEEL BASE	PRICE
GRANDVILLA 3000	190"	\$111,000.00
OPTIONAL Cummins 5.9 Diesel 190 h.p.		\$117,000.00

MODEL NO*	WHEEL BASE	PRICE
GRANDVILLA 3300	208"	\$125,000.00
OPTIONAL Cummins 5.9 Diesel 190 h.p.		\$131,000.00

### STANDARD EQUIPMENT

#### Automotive

2" square receiver hitch  
200 amp. hour battery - coach  
90 gallon fuel tank  
Clock in dash  
Cruise control  
Dual wipers & washers  
Halogen headlights  
Heavy duty radiator  
Heavy duty transmission  
Inside rearview mirror  
Large trunk storage  
Large V8 engine/gas  
Cummins 5.9 diesel-optional  
Padded automotive-type dash with swing-up top for easy service  
Padded sun visors  
Power disc brakes front and rear  
Power steering  
Radiator water recovery system  
Stainless steel wheel covers  
Stainless steel bumpers  
Transmission oil cooler  
Trunk light

#### Safety

Back-up lights  
Emergency exit side windows  
Emergency flashers  
Entry door hand rail  
Fire extinguisher  
Halogen fog lights  
Impact switch for emergency fuel pump shut down  
Large outside mirrors with wide angle vision, turn signals  
LP gas leak detector  
Park lights  
Retractable seat belts  
Smoke detector  
Steel cage with aluminum roof frame  
Steel chassis  
Tinted safety glass  
Warning triangle reflector kit

#### Livability

1 1/2" block Styrofoam® insulation  
4 burner cooktop with gas oven below  
40 channel CB radio  
36 x 76 Twin beds - RB & SB  
54 x 76 2900 SBI  
60 x 80 Queen size bed - SBI  
All wood drawers on full extension ball bearing glides  
Automatic closet lights  
Built-in 13" color TV over dash  
Built-in vacuum cleaner  
Carpeted overhead cabinets  
Cedar lined closet  
Corian® countertops in kitchen and bath  
Curtains and sheers  
Deadbolt lock  
Deluxe carpet & pad  
Digital alarm clock in bedroom  
Dometic® AES ref/freezer  
Electronic AM/FM/cassette with Seek  
Exterior cable TV hookup  
Eye level microwave/convection oven  
Fiberglass underskin  
Fluorescent lighting throughout  
Generator switch in bedroom & cockpit  
Ice maker  
Laundry chute with removable bag (Except 2900 SBI)  
Motor-aid water heater with electronic ignition  
One piece fiberglass roof and sidewalls  
Porch and entry lights  
Power ceiling vent in bath area  
Real wood paneling  
Recliner & swivel chair (Except 2900 & 3000)  
Reclining pilot & co-pilot seats  
Slide-out console table & drawer  
Sofa bed (Except 3000 series)  
Thermostatically controlled fresh air ventilator  
Tub & shower combination  
TV antenna with 2 jacks

Wall mounted clock  
Water pump switch in bath & kitchen

#### Electrical

110 volt automatic changeover  
50 Amp. shoreline  
6.3 K.W. L.P. generator/diesel  
7.0 K.W. generator/gas  
75 Amp. converter-charger  
Master battery disconnect switch  
Trailer wiring

#### Heating/Cooling

17,250 BTU auto AC  
35,000 BTU auto heat/def.  
(2) - 13,500 roof AC with heat strips  
Ducted furnace with electronic ignition (35,000 BTU) Additional  
16,000 BTU furnace on 3300 series

#### Convenience

194 lb. LPG tank/diesel model  
100 lb. LPG tank/gas model  
38 & 42 gallon waste tanks  
70 gallon fresh water capacity - SBI  
64 gallon fresh water capacity - RB  
2 gallon pre-charged water accumulator tank  
77" interior height  
90 3/8" interior width  
Antenna warning  
Battery boost switch  
Electronic systems monitor  
Exterior 110v outlet  
Glove box  
Large exterior storage  
Large interior storage  
LPG access door  
Pilot & co-pilot ducted fan system  
Roof mounted rack and ladder  
Telephone jack



## CHASSIS SPECIFICATIONS

### FRONT ENGINE SERIES

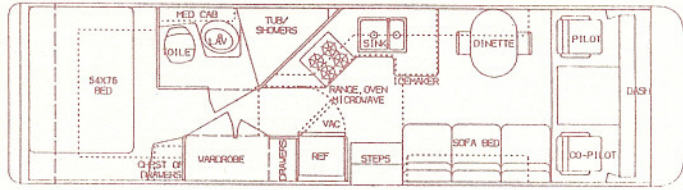
Grand Villa Models	2900	3000	3300
<b>Gross Vehicle Weight Rating</b>	16000 (Gas) 18000 (Diesel)	16000 (Gas) 18000 (Diesel)	18000
<b>Gross Combined Vehicle Weight Rating</b>	20000	20000	20000
<b>Wheel Base</b>	190"	190"	208"
<b>Standard Engine</b>	Ford 460	Ford 460	Ford 460
<b>Optional Diesel Power</b>	Cummins B 5.9 Diesel	Cummins B 5.9 Diesel	Cummins B 5.9 Diesel
<b>Transmission:</b>			
Gas	Ford C-6	Ford C-6	Ford C-6
Diesel	Allison 542	Allison 542	Allison 542
<b>Rear Axle Ratio:</b>			
Gas	4:88	4:88	5:13
Diesel	3:73	3:73	3:73
<b>Brakes</b>	Hyd. Disc.	Hyd. Disc.	Hyd. Disc.
<b>Tires</b>	8R 19.5 Michelin	8R 19.5 Michelin	8R 19.5 Michelin

### ADDITIONAL CHASSIS SPECIFICATIONS

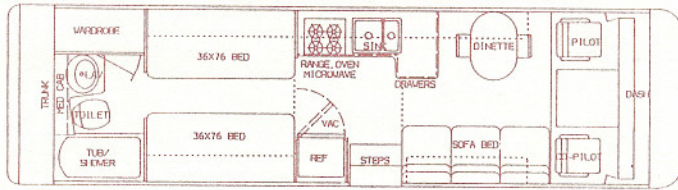
<b>Frame Rails</b>	7.32 / 2.79 / .25 Channel 36000 PSI	<b>Wheel Tread Width</b>	69.9 Inches
<b>Steering System</b>	Integral Hydraulic	<b>Rear Axle</b>	Dana HD 70 (Gas) Dana HD 80 (Diesel)
<b>Power Assist</b>	Std.	<b>Suspension</b>	Leaf Springs
<b>Steering Gear</b>	Saginaw 710	<b>Stabilizer Bar</b>	Heavy Duty Standard
<b>Steering Column</b>	Tilt	<b>Gross Axle Rating</b>	12000 lbs. (10,000 on 29 & 30' Gas)
<b>Steering Wheel</b>	VIP	<b>Tread Width</b>	67.5 Inches
<b>Electrical System</b>	12 Volt Negative Ground	<b>Parking Brake</b>	Drum Type, Spring Applied Hyd. Release
<b>Alternator</b>	100 Amp/Gas: 145 Amp/Diesel	<b>Park Brake Control</b>	Hydraulic Switch
<b>Battery</b>	650 CCA/Gas: 925 CCA/Diesel	<b>Additional Equipment</b>	Wheel Nut Wrench Wheel Jack
<b>Front Axle</b>	Rockwell I-Beam		
<b>Suspension</b>	Leaf Springs		
<b>Stabilizer Bar</b>	Heavy Duty Standard		
<b>Gross Axle Rating</b>	6000 lbs. / 6340 Diesel		
<b>Shock Absorber</b>	Yes		

# FLOOR PLANS

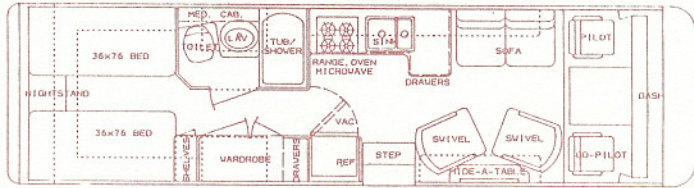
## 2900 GVF SBI FLOOR PLAN



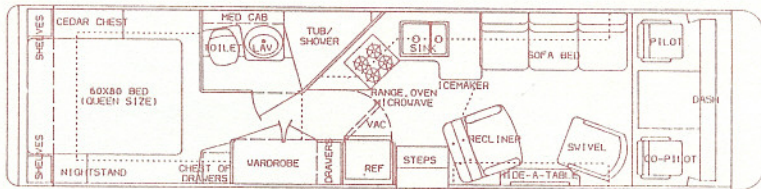
## 2900 GVF RB FLOOR PLAN



## 3000 GVF SB FLOOR PLAN

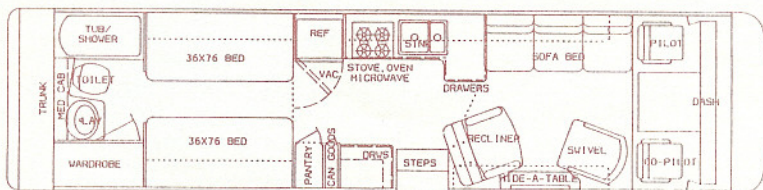


## 3300 GVF SBI FLOOR PLAN



\* Twin beds available

## 3300 GVF RB FLOOR PLAN



**BASIC FLOOR PLANS:**  
 SB - SIDE BATH, TWIN BEDS  
 SBI - SIDE BATH, ISLAND BED  
 RB - REAR BATH