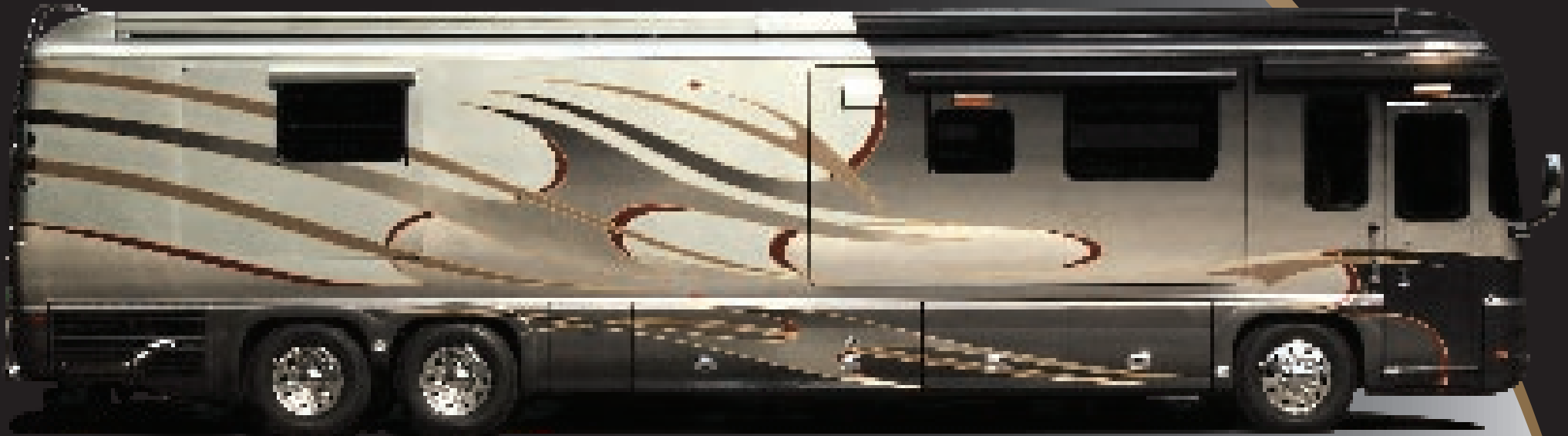




FORETRAVEL
MOTORCOACH



2008 FORETRAVEL

Phenix



Inspired by legendary craftsmanship and a legacy of the very highest quality, Phenix is the coach most only dream about. A coach born of hardened steel, hand-turned woods, and the relentless pursuit of perfection. Phenix is the essence of the custom coach. An invitation to discover the freedom within. To step inside a world where fabrics, tile, colors, and space are at your whim and command. Where comfort and function are limited only by the imagination.

Nimbus



The Nimbus, available in XT, SE, & CE Series, offers the discriminating buyer a range of prices, engine sizes, features, and custom options for those who take pride in owning a quality motorcoach. The fit & finish and ride & handling are what you've come to expect from Foretravel, one of the all time leaders in the motorcoach industry.

Chassis Features	Nimbus XT 34',36',38',40'	Nimbus SE 40',42'	Nimbus CE 38',40',42'	Phenix 40',42',45'
ABS anti-lock braking system w/automatic slack adjusters	*	*	*	*
Air disc brakes on all wheels	*	*	*	*
Air hose for tire service	*	*	*	*
Air quick connect in storage bay	*	*	*	*
Alcoa aluminum wheels with Dura-Bright protection	*	*	*	*
Allison gen.. 4 transmission MH 3000R	*		*(38)	*
Allison gen.. 4 transmission MH 4000R		*(40, 42)	*(40, 42)	*
Allison transmission retarder	*	*	*	*
Alternator - 160-amp	*		*(38)	*
Alternator - 200-amp		*(40, 42)	*(40, 42)	*
Alternator - 320-amp				*
Automatic traction control (ATC)	*	*	*	*
Auxiliary 12v air compressor	*	*	*	*
Chassis - TravelRide by Foretravel	*	*	*	*
all air ride	*	*	*	*
4 outboard-mounted air springs (drive axle),	*	*	*	*
4 outboard-mounted air springs (straight front axle),	*	*	*	*
2 air springs (IFS front axle),				*
2 air springs (lifting tag axle)		*(40, 42)	*(40, 42)	*
Engine - Cummins ISL 425 HP	*		*(38)	*
Engine - Cummins ISM 500 HP		*(40, 42)	*(40, 42)	*
Engine - Cummins ISX 600 HP				*
Fuel filter/water separator, Cummins	*		*(38)	*
Fuel system w/air & water purge		*(40, 42)	*(40, 42)	*
Front axle – straight beam	*	*	*	*
Front axle – IFS (independent front suspension)				*
Front tow retrieval points	*	*	*	*
House batteries - 210 amp AGM each	*	*	*	*
HWH computerized air leveling system	*	*	*	*
Koni FSD shock absorbers	*	*	*	*(not on IFS)
Power steering	*	*	*	*
Radiator coolant recovery system	*	*	*	*
Rear axle ratio: 4.30:1				*
Rear axle ratio: 4.33:1		*(40, 42)	*(40, 42)	*
Rear axle ratio: 4.78:1	*		*(38)	*
Receiver hitch - 18,000 lb. rated	*	*	*	*
Remote battery jumper terminals		*	*(40, 42)	*
Suspension: Firestone air springs	*	*	*	*
Tag axle, lifting		*(40, 42)	*(40, 42)	*
Tires: 295/80R22.5	*	*	*	*
Tires: 315/80R22.5				*
Transmission oil cooler	*	*	*	*

Exterior Features				
Auxiliary rear brake lights and turn signals	*	*	*	*
Awning, Girard electric door	Option	Option	Option	Option
Awning, roof-mounted, automatic patio, Girard	1	1	1	1
Awning, shells, Girard		*(3-40'/42')	*(1-38', 3-40'/42')	*
Awnings, Girard electric window	Option	Option	Option	Option
Awnings, Zip Dee manual window	Option	Option	Option	Option
Cargo tray, sliding	Option	1	1	1
Carpeted storage bays	*	*	*	*
Chairs, folding patio	Option	Option	*	*
Clear shield paint protection below windshield	Option	Option	Option	Option
Consolidated components bay	*	*	*	*
Docking lights, (4) with switch in dash	*	*	*	*
Docking lights, (4) with switch in dash & bedroom				*
Dual halogen head lamps	*	*	*	*
Dual-pane tinted & insulated windows	*	*	*	*

Exterior Features Continued	Nimbus XT 34',36',38',40'	Nimbus SE 40',42'	Nimbus CE 38',40',42'	Phenix 40',42',45'
Easy view one-piece windshield	*	*	*	*
Electric entry step	*	*	*	*
Electric entry step (Executive)				*
Electric utility reels	Option	*	*	*
Fiberglass roof & sub floor (one-piece)	*	*	*	*
Flush kit	Option	*	*	*
Fog lights	*	*	*	*
Freezer, 100lb in storage bay	Option	Option	Option	Option
Fuel fill – on both sides of coach	*	*	*	*
Heated/remote triple head chrome mirrors w/LED turn signals	*	*	*	*
Hidden air horns	*	*	*	*
Lighted entry door with assist handle, keypad, & doorbell	*	*	*	*
LP connection	Option	*	*	*
Manabloc plumbing supply manifold	*	*	*	*
Marker lights, LED		*	*	*
Mud flaps	*	*	*	*
Painted exterior, full body paint with clear coat finish	*	*	*	*
Parallel storage doors	Option	*	*	*
Porch light	*	*	*	*
PTL entry door with screen and kick guard	*	*	*	*
Remote storage door locks	*	*	*	*
Roof AC drains	*	*	*	*
Stainless steel lined utility bay		*	*	*
Storage bay lights	*	*	*	*
Trailer wiring	*	*	*	*
TV antenna - electric with booster	Option	*	*	*
TV antenna with booster	*			
TV outlet and 12v outlet in storage bay	*	*	*	*
Utility station: Fresh water connection, 50 amp shoreline connection, hot and cold water faucet, soap dispenser, cable TV, phone connection, paper towel holder, water pump switch, water fill switch with auto shut-off, 120v receptacle	*	*	*	*
Xenon low beam headlights		Option	*	*

Dash & Cockpit Features				
12 volt accessory receptacle	*	*	*	*
Battery boost switch	*	*	*	*
Camera, motorized back-up with control at dash	Option	Option	*	*
Cameras, mirror mount with color back-up monitor	Option	*	*	*
CB at dash, hand held	Option	*	*	*
Compass and outdoor temperature	*	*	*	*
Co-pilot seat, Villa leather 6 way power with footrest	*			
Co-pilot seat, Villa residential 6 way power w/footrest & headrest	Option	*	*	*
Cruise control with dash indicator light	*	*	*	*
Dash AC controls for co-pilot	*	*	*	*
Driver and passenger drink holder	*	*	*	*
Entry flooring, hard surface	*	*	*	*
Gauges, backlit analogue	*	*	*	*
Generator auto start/stop	*	*	*	*
Generator start/stop switch	*	*	*	*
GPS/AM/FM/CD in dash (sat. radio capable)	Option	*	*	*
Illuminated dash panel	*	*	*	*
Monitor, passenger satellite/GPS	Option	Option	Option	Option
Map lights, pilot & copilot	*	*	*	*
Pedals, throttle & brake adjustable	*	*	*	*
Pilot seat, Villa leather 6-way power	*	*	*	*
Pilot seat, Villa leather 6-way power with air ride				*
Silverleaf digital glass dash		Option	Option	Option

	Nimbus XT 34',36',38',40'	Nimbus SE 40',42'	Nimbus CE 38',40',42'	Phenix 40',42',45'
Dash & Cockpit Features Continued				
Silverleaf VMS 400 (eng./trans. Monitor)	Option	Option	Option	Option
Steering wheel, leather illuminated Smart wheel	•			
Steering wheel, tilt and telescoping	•	•	•	•
Steering wheel, wood look Smart wheel	Option	•	•	•
Transmission gear selector, touch-pad	•	•	•	•
Windshield / privacy shade, electric	•	•	•	•
Windshield wipers, synchronized	•	•	•	•
Windshield, shade band at top	•	•	•	•

Appliances/Electronics/Lighting/Audio-Video

Battery charger, solar	Option	Option	Option	Option
Cellular antenna, digital	Option (40)	Option	Option (40, 42)	Option
Component audio and digital video cables	•	•	•	•
Cook top, 2-burner electric	Option	Option	Option	•
Cook top, 2-burner LP w/electronic ignition, recessed	•	•	•	Option
Elan Via 2 remote				Option
Home theater system in LR w/ Anthony Gallo Speakers	•	•	•	•
Inverter/power monitor panel in living room area	•	•	•	•
Lighting, accent under counters, behind valances, floor lights	Option	•	•	•
Lighting, Halogen reading lamps in bedroom	•	•	•	•
Microwave, GE Advantium	Option	Option	•	•
Microwave/convection oven	•	•		
MX3000 Universal remote	Option	Option	Option	Option
MX850 Universal remote	2	2	2	
MX950 Universal remote		Option	Option	2
Refrigerator, 120v electric w/ice & water in door		Option	Option	•
Refrigerator, Dometic side-by-side 12 cu. ft.	•	•	•	Option (14 cu. ft.)
Satellite radio, XM or Sirius (requires subscription)	Option	Option	Option	• (XM)
Satellite system, 2nd HD receiver	Option	Option	Option	Option
Satellite system, in motion w/HD DVR receiver	Option	Option	Option	•
Satellite system, in motion w/HD receiver	Option	Option	Option	
Silverleaf Total Coach monitor				•
TV 20" LCD in bedroom	•			
TV 23" LCD w/DVD in bedroom		•	•	
TV 26" LCD in bedroom				•
TV 32" LCD in living room	•			
TV 37" LCD in living room	Option	•	•	•
TV 42" LCD in living room		Option (FD)	Option (FD)	Option (FD)
TV antenna - electric with booster	Option	•	•	•
TV antenna with booster	•			
Washer/dryer connections	•	•	•	•

Interior Livability Features

Powered step-well cover with two switch locations	•	•	•	•
Brushed nickel cabinet hardware	•	•	•	•
Calap-Z-Table	Option	Option	Option	Option
China toilet	•	•	•	•
Color-coordinated throw pillows (sofa & bed)	•	•	•	•
Concealed door hinges	•	•	•	•
Designer kitchen faucet with pullout sprayer	•	•	•	•
Designer window treatment with day/night shades	•	•	•	•
Designer window treatment with electric shades			Option	•
Doors, interior	Panel-Frame	Raised Panel	(RP 40', 42') (PF 38')	Raised Panel
Electric Fantastic fan in bath & toilet room w/auto rain sensor	•	•	•	•
Filter, drinking water & ice maker water	•	•	•	•
Floor-to-ceiling wallpaper and chair rail	•	•	•	•
Floor Heat, electric (with approved flooring)		Option	Option (40, 42)	Option
Kitchen pantry	•	•	•	•
Lighting, Intellitec multiplex system	•	•	•	•

	Nimbus XT 34',36',38',40'	Nimbus SE 40',42'	Nimbus CE 38',40',42'	Phenix 40',42',45'
Interior Livability Features Continued				
Magazine rack and drink holder at co-pilot seat	•	•	•	•
Queen bed (60" x 77") (66" x 77" floor plan dependent)				
Recliner	•(FD)	•(FD)	•(FD)	•(FD)
Shower foot rest	Option	Option	Option	Option
Shower head slider	•	•	•	•
Sink, vessel lavatory sink				•
Skylight above shower	•	•	•	•
Slide-out rooms, flush with sidewalls when retracted	•	•	•	•
Slide-out rooms, pneumatic sealed	•	•	•	•
Solid surface counter tops (kitchen and bath)	•	•	•	• (Silestone)
Solid surface desktop (floorplan dependent)	•	•	•	• (Silestone)
Solid surface dinette table	•	•	•	• (Silestone)
Solid surface night stand tops		•	•	• (Silestone)
Solid wood bedroom counter tops	•			
Stainless steel kitchen sink w/covers	•	•	•	•
Storage under entry step	•	•	•	•
Telephone jack in living area and bedroom	•	•	•	•
Tip-out storage below kitchen sink	•	•	•	•
Tile floor (kit, bath, D & P area)		•(40', 42')	•(40', 42')	•
Resilient ceramic tile (vinyl) (bath, D & P area)	•		•(38')	
Washer dryer combination	Option	Option	Option	Option
Washer dryer, stacked		Option (FD)	Option (FD)	Option (FD)
Wood, exotic				Option
Wood, handcrafted cherry, walnut or maple cabinetry	•	•		•
Wood, handcrafted cherry, walnut or mahogany cabs.			•	•

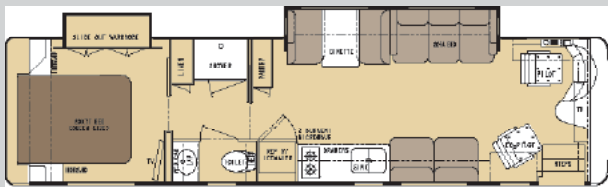
Safety Features

All coaches built to RVIA specifications	•	•	•	•
Carbon monoxide detector	•	•	•	•
Daytime running lights	•	•	•	•
Driver & passenger 3-point seat belts & shoulder harnesses	•	•	•	•
Emergency flasher lights	•	•	•	•
Fire extinguishers (2)	•	•	•	•
GFI protected circuits	•	•	•	•
High-mounted additional brake lights	•	•	•	•
Interior exit-assist handle	•	•	•	•
Lighted entry-door assist handle	•	•	•	•
LP leak detector	•	•	•	Option
Polarity meter/monitor – 120v	•	•	•	•
Safe	Option	Option	Option	•
Smoke detector	•	•	•	•

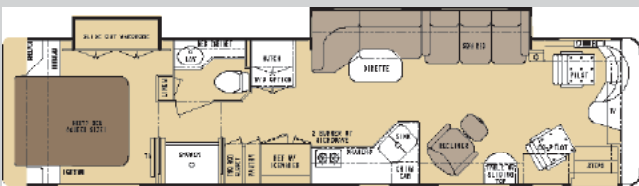
Heating/Cooling/Electrical

10kw diesel generator in quiet box	•	•(38', 40')	•(38')	
12 volt battery disconnect	•	•	•	•
12.5kw diesel generator in quiet box		(Option 40') (STD 42')	(Option 40') (STD 42')	•
2000 w inverter/charger	•	•	•	
3000 w inverter/charger		Option	Option	•
50 amp shoreline connection	•	•	•	•
Air conditioning and heating with hidden returns	•	•	•	•
Air conditioning, ducted with 2 roof airs	•	•(40')	•(38', 40')	•(40')
Air conditioning, ducted with 3 roof airs		•(42')	•(42')	•(42')
Air-conditioning, ducted with 4 roof airs				•(45')
Auto temp. start for generator w/safety reset	•	•	•	• w/o reset
Electrical surge-suppression system	•	•	•	•
Heat pumps on roof AC's	•	•	•	•
Hydronic heating with galvanized steel housing	•			
Hydronic heating with stainless steel housing		•	•	•
Low-battery generator auto-start	•	•	•	•

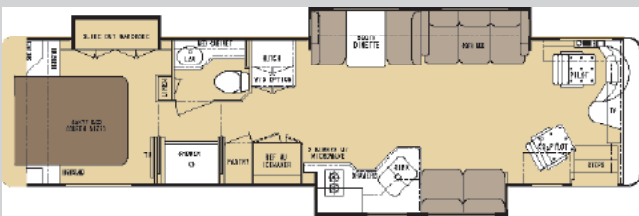
Nimbus XT



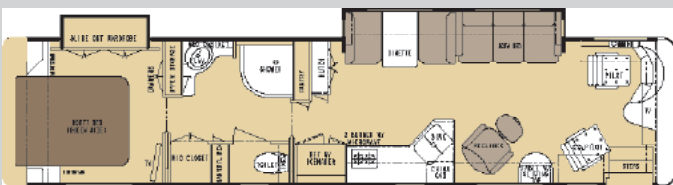
34 Classic



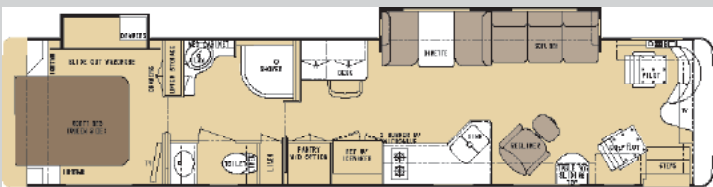
36 Classic



36 Delano

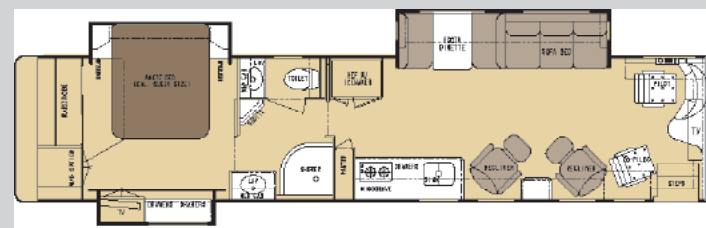


38 Classic

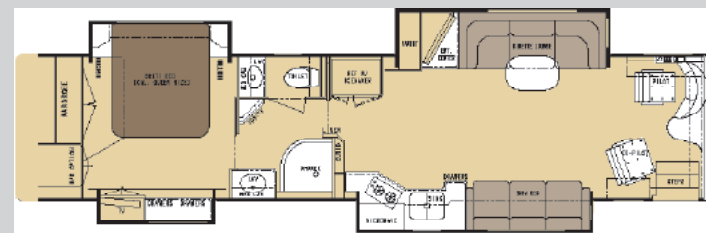


40 Modena

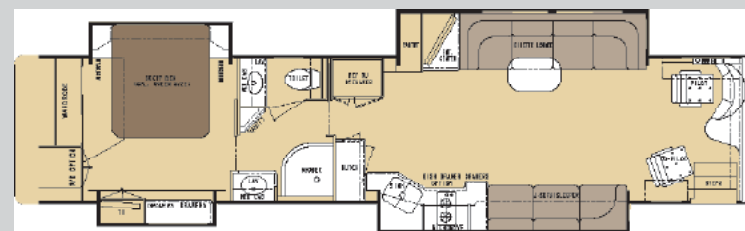
Nimbus SE



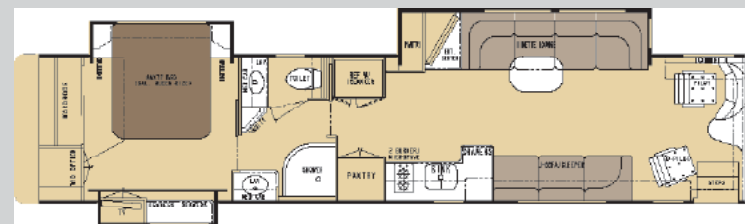
40 Tahoe



40 Caspian

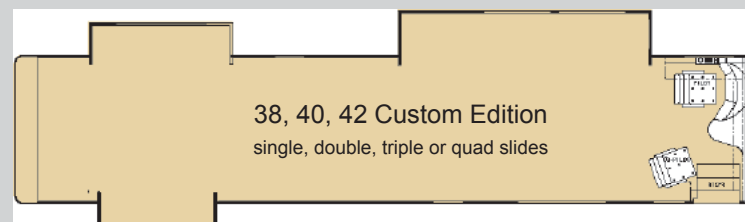


42 Carlyle



42 Castella

Nimbus CE



38, 40, 42 Custom Edition
single, double, triple or quad slides



The Onan Generator is hydraulically powered for easy maintenance access.



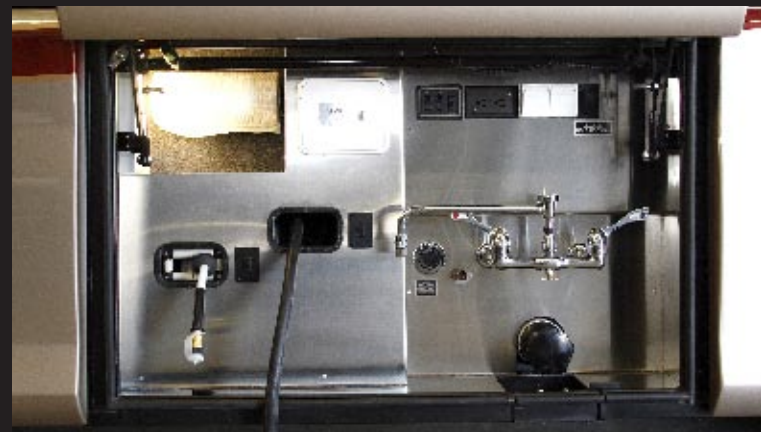
Pictured is a Phenix dash with optional Silverleaf digital glass display, all models come with Villa 6 way power seat, adjustable brake & accelerator pedals, back-up camera with dash monitor, Allison transmission retarder.



Horizontal parallel storage doors below slide rooms. Vertical storage doors in other locations. Standard on Phenix, Nimbus SE & CE, optional on Nimbus XT.



Horizontal parallel storage door for easy access to storage bay when slide room is extended.



Stainless steel lined utility bay. Standard on Phenix and Nimbus CE.

	Nimbus XT	Nimbus SE	Nimbus CE	Phenix
Warranty				
Coach	12mo/12000mi	12mo/12000mi	15mo/15000mi	18mo/18000mi
Structure	4yr/75000mi	4yr/75000mi	5yr/100000mi	5yr/100000mi
Engine	5yr/100000mi	5yr/100000mi	5yr/100000mi	5yr/100000mi
Transmission	5yr/unlimited mi	5yr/unlimited mi	5yr/unlimited mi	5yr/unlimited mi
Available Lengths	34' / 36' / 38' / 40'	40' / 42'	38' / 40' / 42'	40' / 42' / 45'

Weights/Measurements/Tank Capacities	Nimbus XT	Nimbus SE	Nimbus CE	Phenix
Exterior height	12' 2 3/8"	12' 2 3/8"	12' 2 3/8"	12' 3"
Exterior width	102"	102"	102"	102"
Fresh water capacity	95 gal.	135 gal.	95gal(38) 135gal(40,42)	135 gal.
Holding tank(s)	145 gal.	145 gal.	145 gal.	145 gal.
LP capacity	17 gal.	17 gal.	17 gal.	Opt.
Fuel capacity	120 gal.	150 gal.	120gal(38) 150gal(40,42)	200 gal.



FORETRAVEL
MOTORCOACH

1221 NW Stallings Drive • Nacogdoches, Texas 75964 • 936-564-8367

www.foretravel.com

Foretravel, Inc. reserves the right to change or correct product specifications at any time without incurring obligations.