

Unihome  
U-280 Series  
102" Wide



**Foretravel, inc.**

Unihome  
U-280 Series  
102" Wide

**MOTORHOMES OF DISTINCTION**

**102" Wide**

**Grand Villa**

**unihome U-280**

**STANDARD EQUIPMENT**

**Automotive**

- 8 bag 100% air ride suspension
- 148 gallon fuel tank
- 160 amp alternator
- 160 amp battery isolator
- 2" square hitch receiver
- 275/80R 22.5 PXZA Michelin ® tires
- Air disc brakes front and rear
- Air hose for tire service
- Allison MT 647 transmission
- Clock in dash
- Cummins C8.3-300 h.p.
- Cruise control
- Dry air cleaner
- Dual electric wipers & washers
- Engine batteries - 1600 CCA Gel Cell
- Engine compartment light
- Engine coolant heater - 110v
- Foretravel chassis 28,000 GVWR
- Full instrumentation
- Halogen headlights
- Heavy duty radiator, bolted construction
- Heavy steel bumpers with decorative fascia
- One piece Alcoa® aluminum wheels
- Padded automotive-type dash with swing-up top for easy service
- Padded sun visors
- Power steering
- Racor® fuel filter
- Radiator water recovery system
- Remote Start Panel
- Transmission oil cooler

**Safety**

- Back-up lights
- Docking lights
- Emergency exit side windows
- Emergency flashers
- Entry door hand rail both sides
- Fire extinguisher
- Halogen fog lights
- Large outside remote mirrors with wide angle vision, heated
- LP gas leak detector
- Park lights
- Polarity meter at hook-up area
- Rear Monitor
- Retractable seat belts
- Self-canceling directional signal lights with volume control
- Smoke detector
- Steel cage with aluminum roof frame
- Tinted safety glass
- Warning triangle reflector kit

**Livability**

- 1 1/2" block Styrofoam® insulation
- 20" Stereo TV in living area
- 36 x 76 Twin beds - SB
- 4 burner cooktop with gas oven
- 40 channel CB radio

- 6-way electric pilot and co-pilot seat base
- 60 - 80 queen-size bed - SBI
- All wood drawers on full extension ball bearing glides
- AM/FM/cassette stereo in bedroom
- Automatic closet lights
- Built-in 13" color TV & VCR in bedroom
- Built-in vacuum cleaner
- Carpeted overhead cabinets
- Cedar lined wardrobe closet
- Corian® countertops in kitchen & bath
- Corian® table w/chairs on 4000 SAI & SBID & WTBI
- Corian® lavatory bowl
- Curtains and sheers
- Deadbolt lock
- Decorative ceiling light on 4000 Series
- Deluxe carpet & pad
- Digital alarm clock in bedroom
- Dometic® AES ref/freezer (SBI)
- Dometic® AES ref/freezer/ice maker (SAI, WTBI & SBID)
- Electronic AM/FM/cassette with seek
- Exterior cable TV hookup
- Eye level microwave/convection oven
- Fiberglass underskin
- Floor level night lights
- Fluorescent lighting throughout
- Full screen door
- Generator switch in bedroom & cockpit
- Ice maker (SBI only)
- Large bath/shower & tub combination or shower
- Laundry storage area on SAI model
- Lavatory drawer
- Lighted vanity with mirror
- Motor-aid water heater with electronic ignition
- One piece fiberglass roof and sidewalls
- Porch & entry lights with touch switch
- Power ceiling vent in bath area
- Real wood paneling
- Recessed double stainless steel sink with covers
- Recliner & swivel chair
- Reclining pilot & co-pilot seats
- Slide-out pantry (except 4000 SAI & WTBI)
- Slide-out console table
- Slide-out shelf under kitchen sink
- Sofa bed
- Thermostatically controlled fresh air ventilator
- Two-point compartment door latches
- Trash compactor except on 3600 SBID & WTBI models
- TV antenna with booster
- Wall mount clock
- Wardrobe dressing mirrors
- Washer/dryer plumbing on 4000 Series
- Water pump switch in bath & kitchen
- Water purifier

**Electrical**

- 110 volt automatic changeover
- 110 voltmeter & polarity meter
- 50 Amp. shoreline
- 6.3 K.W. generator/L.P. fuel
- 75 Amp. converter-charger
- Coach Battery (1) Gel Cell 408 reserve minutes
- Master battery disconnect switch
- Trailer wiring

**Heating/Cooling**

- 17,250 BTU auto/AC
- 35,000 BTU auto heat/def.
- (2)-13,500 BTU roof AC with heat strips and wall thermostats
- (2)-Ducted furnaces with electronic ignition (16,000 and 35,000 BTU)

**Convenience**

- 110 gal. gray water capacity
- 54 gal. black water capacity
- 102 gallon fresh water capacity
- 2 gallon pre-charged water accumulator tank
- 77" interior height
- 12v air compressor
- 270 lb. LPG tank
- Antenna warning
- Automatic air step
- Computer screen systems monitor
- Computerized air leveling system
- Convenient utility station: Hot and cold water, soap dispenser, paper towel holder, easy hookup and dump
- Door bell
- Dual Hadley® air horns
- Exterior 110v outlet
- Glove box
- Large bus type belly storage
- Large interior storage
- Map lights for pilot & co-pilot
- Pilot & co-pilot ducted fan system
- Remote searchlight
- Roof mounted rack and ladder
- Safe
- Storage compartment lights
- Telephone jack

**UNIHOME U-280**

MODEL NO*	WHEEL BASE	PRICE
GRANDVILLA		
3600	228"	\$267,000.00
4000	276"	\$290,000.00

\*Model number denotes approx. length

Prices, specifications, descriptions and illustrations in this literature are accurate as known at the time of publication but subject to change without notice.  
1993 Model Price List effective 5/1/92

# Grand Villa

unhome

## U-280 SERIES CHASSIS SPECIFICATIONS

<b>Grand Villa Series</b>	3600	4000
<b>Gross Vehicle Weight Rating</b>	28000	28000
<b>Gross Combined Vehicle Weight Rating</b>	30000	30000
<b>Wheel Base</b>	228"	276"
<b>Standard Engine</b>	Cummins C 8.3 300 H.P.	Cummins C 8.3 300 H.P.
<b>Transmission</b>	Allison MT 647	Allison MT 647
<b>Rear Axle Ratio</b>	3.58	3.58
<b>Brakes</b>	Four Wheel Air Operated Disc	
<b>Tires</b>	275/80 R22.5 XZA Pilot Radial Michelin	
<b>Wheels</b>	22.5X8.25 Alcoa® Polished Aluminum 10 Stud, 11.25 BC	

## POWER TRAIN ARRANGEMENT

### VEHICLE RATINGS

Front axle GAWR -10,000  
Rear axle GAWR -19,000  
Total GVWR -28,000  
Total GCWR -30,000

### AIR CLEANER

Donaldson - 1475 CFM @ 10" H2O

### AXLES

#### Front

Rockwell FF941 Easy Steer®  
Hub rating - 12,000

#### Rear

Rockwell RS21 145  
Hub rating - 21,000  
Ratio - 3.58:1  
Hypoid-Generoid ® gearing  
Extended Life ® pinion seals

### BRAKES

#### Parking and Emergency:

Spring brake on rear axle  
Chambers - 30 cu in

#### Service:

Air operated; Dual system  
DuraMaster® air disc brakes  
Paymaster® Automatic slack adjusters  
Air dryer - Bendix AD-4  
Rear chambers- 24 cu in  
Front chambers - 20 cu in

### CHASSIS EQUIPMENT

148 gallon fuel tank in front bay  
Wheel nut wrench and wheel jack

Rotary freon compressor

### COOLANT SYSTEM

Radiator core - brass and copper,  
tube and fin  
Bolted construction  
Thermostat Controlled Hydrostatic Fan  
Charged air cooler  
Rear side mount low profile radiator

### ELECTRICAL SYSTEM

Alternator - 160 amp  
Lighting - 12v  
Starting - 12v  
Batteries - 1600 CCA Gel Cell

### ENGINE DATA

Cummins C8.3-300  
Type - Turbo charged 4 cycle  
Horsepower - 300  
Displacement - 510 cu in  
Torque - 820 ft lbs @ 1300 RPM  
Bendix air cruise control  
Continuous engine monitoring:  
Transmission temperature, water  
temperature, oil pressure

### FRAME

Low carbon steel  
Welded unibody

### INSTRUMENTATION

Speedometer, trip odometer,  
tachometer with hour meter, oil pressure,  
fuel level, transmission temperature,  
engine coolant temperature, dual air

pressure, voltmeter, turn signal  
indicators, high beam indicator, parking  
brake light, low air pressure warning light,  
blade type automotive fuses, clock

### PAINT

Black Chassis Coat

### PROPELLER SHAFT

Dana Spicer 1710  
Dynamically balanced

### STEERING SYSTEM

Integral hydraulic power gear  
Vickers V-10 direct drive pump

### SUSPENSION

Trailing arm  
100% air ride suspension

### TRANSMISSION

Detroit Diesel Allison MT 647

#### Ratios:

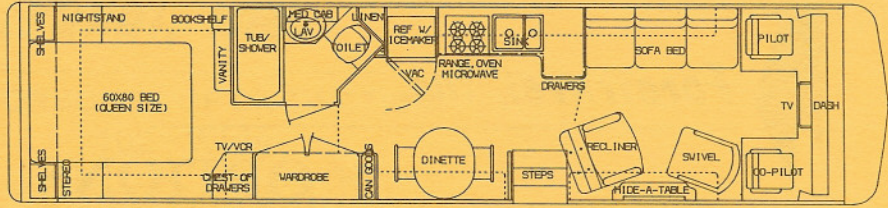
4th -1.00:1  
3rd -1.39:1  
2nd -2.09:1  
1st -3.58:1  
Rev -5.67:1

### TIRES

275/80R 22.5 XZA Michelin®

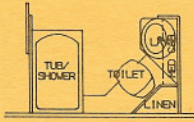
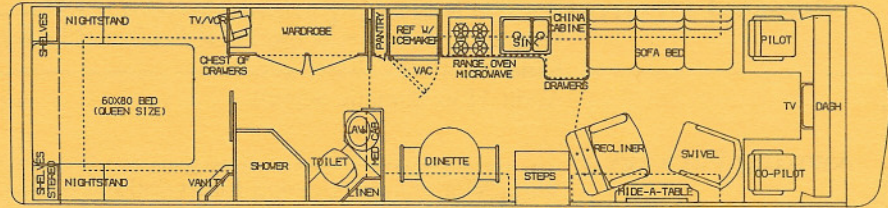
# FLOOR PLANS

**3600 U280W SBID 102"**



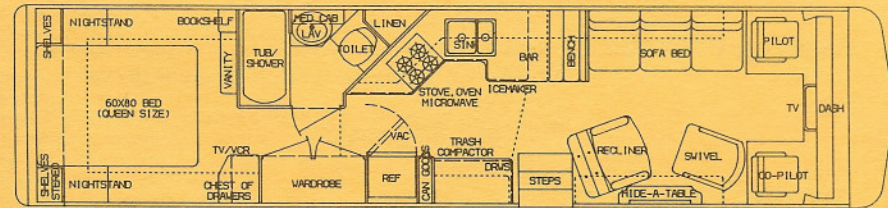
\*Twin beds available

**3600 U280W WTBI 102"**



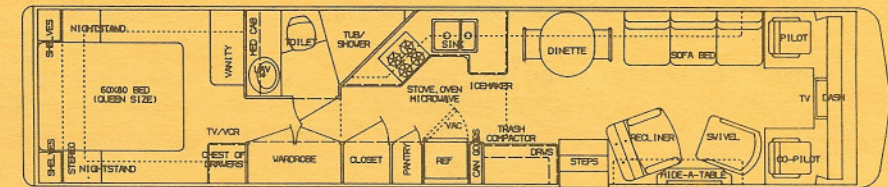
OPTIONAL BATH

**3600 U280W SBI 102"**



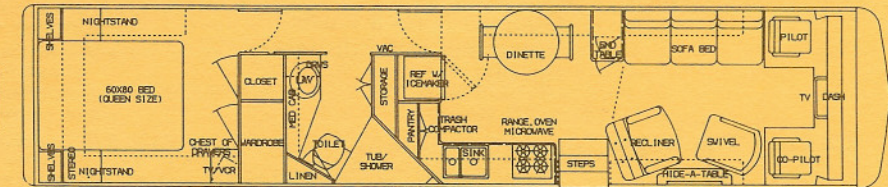
\*Twin beds available

**4000 U280W SBI 102"**

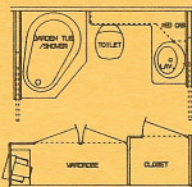
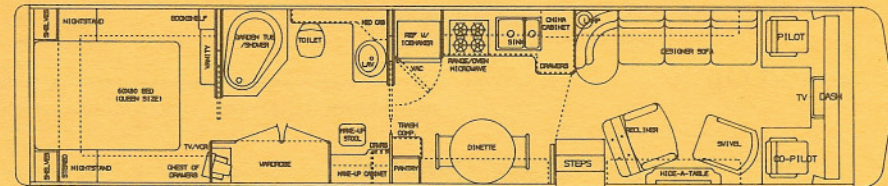


\*Twin beds available

**4000 U280W SAI 102"**



**4000 U280W WTBI 102"**



OPTIONAL BATH

**BASIC FLOOR PLANS:**  
 SB - SIDE BATH, TWIN BEDS  
 SBI - SIDE BATH, ISLAND BED  
 SAI - SIDE AISLE, ISLAND BED  
 SBID - SIDE BATH, ISLAND BED, DINETTE  
 WTBI - WALK THRU BATH, ISLAND BED



**Foretravel, inc.**

**Grand Villa**  
**unihome U280**

## OPTIONS

<b>Advanced Electronics Package.....</b>	<b>\$6302.00</b>
1500 watt inverter system (includes extra battery) .....	\$2750.00
Slide out 10 kw diesel generator .....	\$3500.00
Audit 1150 Climatic Screen .....	\$600.00
<b>Awning Package I .....</b>	<b>\$1665.00</b>
Window awnings covering four windows .....	\$824.00
Patio awning .....	\$876.00
Two matching chairs .....	\$110.00
<b>Awning Package II .....</b>	<b>\$1873.00</b>
Window awnings covering five windows .....	\$1050.00
Patio awning .....	\$876.00
Two matching chairs .....	\$110.00
<b>Awning Package III .....</b>	<b>\$2044.00</b>
Window awnings covering six windows .....	\$1236.00
Patio awning .....	\$876.00
Two matching chairs .....	\$110.00
<b>Convenience Package .....</b>	<b>\$2316.00</b>
LP connection for Bar-B-Que .....	\$94.00
100 lb. slide out freezer .....	\$1274.00
Solar battery charger .....	\$550.00
Modular storage cabinet .....	\$600.00
<b>Deluxe Kitchen Package.....</b>	<b>\$520.00</b>
Gourmet Spray® faucet .....	\$140.00
Instant hot water dispenser .....	\$175.00
Blender .....	\$250.00
<b>Luxury Package .....</b>	<b>\$1276.00</b>
Parquet flooring (kitchen only) .....	\$1032.00
Sealand china toilet with sprayer .....	\$120.00
Leaded beveled glass insert for china cabinet door (SAI, WTB) .....	\$100
Personalized entrance door lighted assist handle .....	\$35.00
Cellular antenna .....	\$100.00
<b>Sound Option .....</b>	<b>\$975.00</b>
Compact Disc Player/Changer .....	\$975.00
<b>Washer / Dryer Package (4000 only) .....</b>	<b>\$2070.00</b>
Washer / Dryer .....	\$2000.00
6 gallon 3-way water heater .....	\$250.00
<b>Video Travel Map Option .....</b>	<b>\$2995.00</b>
Blaupunkt Travel Pilot Scrolling Travel Map with one CD Map .....	\$2995.00
<b>Hot Water Heat (Exchange) Option .....</b>	<b>\$4995.00</b>
Aqua Hot Diesel, Electric and Motoraid System .....	\$4995.00
(available on ordered units only)	