

# Table of Contents

<b>1995 Foretravel</b>	3
<b>Specifications U320 / U300 / U280 / U240</b>	3
<b>Brochures</b>	3
<b>Floor Plans</b>	3
<b>Photos</b>	6
<b>Specifications</b>	9
<b>1995 U320C SE</b>	9
Models & Codes	9
WEIGHTS/RATINGS	10
AUTOMOTIVE	10
LIVABILITY	10
CONVENIENCE	11
SAFETY	12
HEATING/COOLING	12
COCKPIT FEATURES	13
APPLIANCES/ELECTRONICS/LIGHTING	13
<b>1995 U320</b>	14
Models & Codes	14
WEIGHTS/RATINGS	14
AUTOMOTIVE	14
LIVABILITY	15
SAFETY	16
HEATING/COOLING	16
CONVENIENCE	17
<b>1995 Grand Villa U300</b>	17
Models & Codes	17
WEIGHTS/RATINGS	18
CHASSIS	18
LIVABILITY	19
ELECTRICAL	20
SAFETY	20
HEATING/COOLING	20
CONVENIENCE	21
OPTIONS	21
<b>1995 Grand Villa U280</b>	22
Models & Codes	22
WEIGHTS/RATINGS	22
CHASSIS	22
LIVABILITY	23
ELECTRICAL	24
SAFETY	24
HEATING/COOLING	25
CONVENIENCE	25
OPTIONS	25
<b>1995 Grand Villa U240</b>	26
Models & Codes	26
WEIGHTS/RATINGS	26
CHASSIS	26
LIVABILITY	27
ELECTRICAL	28

SAFETY .....	28
HEATING/COOLING .....	29
CONVENIENCE .....	29

# 1995 Foretravel

Specifications, Brochures, Floor Plans & Photos for model year 1995



- The Unicoach was launched in 1995, featuring a bus-style front end and greater interior space.
- U320 SE & U300 were 370hp M11 engines up-rated to 400hp at the Foretravel factory
- 'C' designated coaches are Unicoach (Bus Style), otherwise its a Unihome (Grand Villa Style)
- All 1995 U320 models were 'SE' with a 'C' to distinguish it as a Unicoach.
- 1995 was the only year the U240 was a wide body, on same narrow track axles.
- The 1995 GV had a full width hatch in front as access for Dash AC while earlier GV's had two small hatches.

## Specifications U320 / U300 / U280 / U240

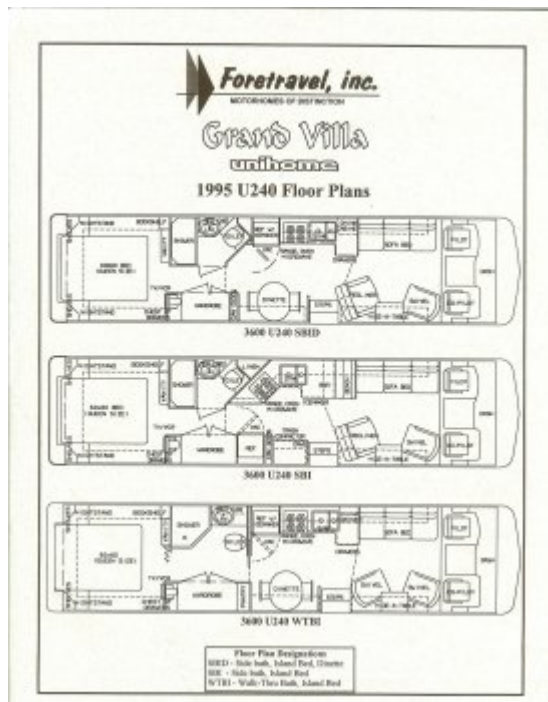
- [1995 U320C Specifications](#)
- [1995 U320 Specifications](#)
- [1995 U300 Specifications](#)
- [1995 U280 Specifications](#)
- [1995 U240 Specifications](#)

## Brochures

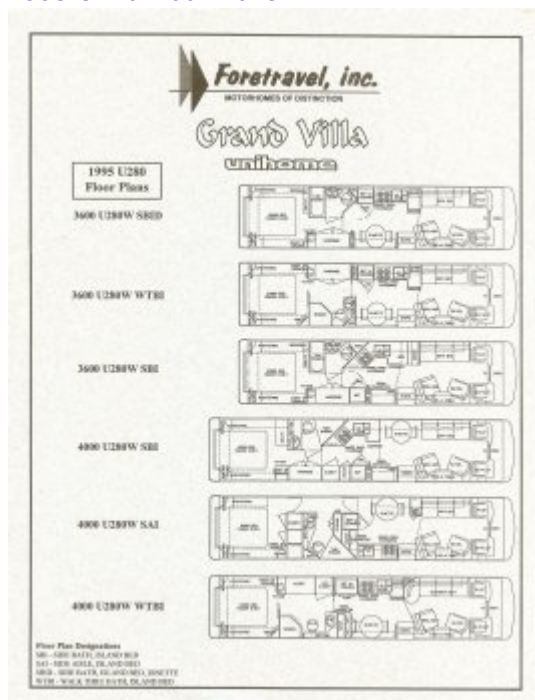
- U320C UniCoach Featured in FMCA Magazine
  - 1995 U300 Options Flyer
  - 1995 U295 Options Flyer
  - 1995 U280 Options Flyer
  - 1995 U240 Options Flyer

## Floor Plans

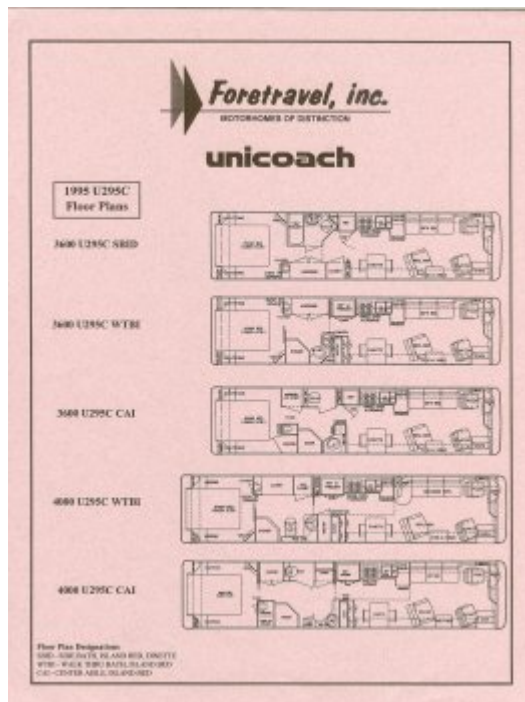
- 1995 U300 Floor Plans
- 1995 U295 Floor Plans
- 1995 U240 Floor Plans



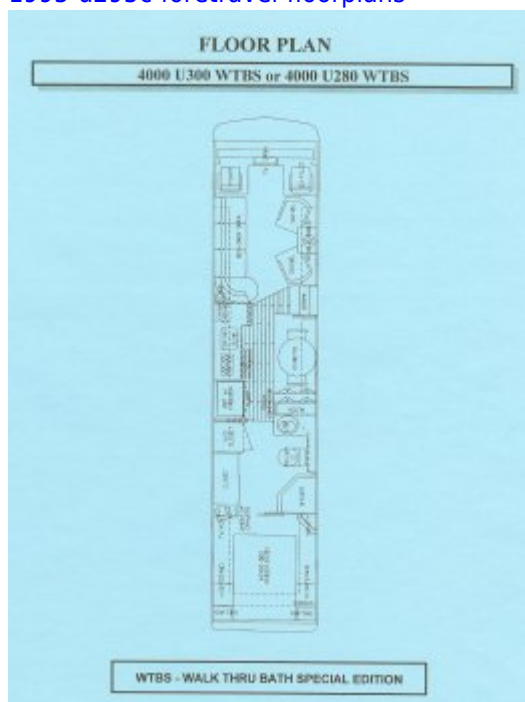
1995 U240 Floor Plans



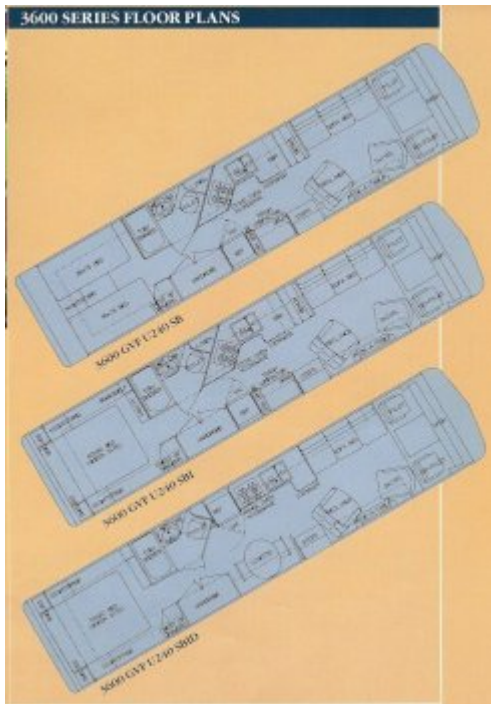
1995 U280 Floor Plans



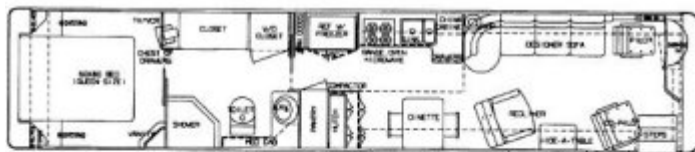
[1995-u295c-foretravel-floorplans](#)



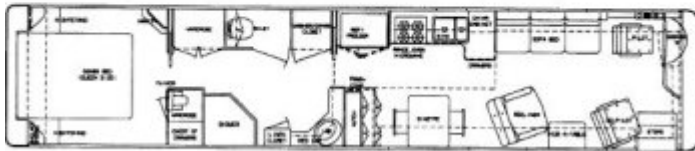
[1995-u300-foretravel-floorplans](#)



1995 U320 Unihome 36' Floor Plans



4000 U320C  
WTBI



4000 U320C  
CAI

1995 U320 Unicoach 40' Floor Plans

## Photos



1995 U240



1995 U280





1995 U295 SE



1995 U300





1995 U320C SE



1995 U320C

## Specifications

### 1995 U320C SE

#### Models & Codes

## WEIGHTS/RATINGS

## WEIGHTS/RATINGS

- Lengths: 40'
- Exterior Height: 11'6"
- Exterior Width: 102"
- Fresh water capacity: 112 gal.
- Gray water capacity: 75 gal.
- Waste water capacity: 56 gal.
- LP capacity: 17 gal.
- Fuel capacity: xxx gal.
- GVWR: 42,000 lbs.
- GCWR: xxx lbs.

## AUTOMOTIVE

## AUTOMOTIVE

- Foretravel chassis and superstructure
- Cummins M11 400 h.p. Electronic diesel engine
- Allison 4060MH 6 speed transmission
- Allison transmission retarder
- Air disc brakes- all wheels
- Air hose for tire service
- Alcoa aluminum wheels, (6) with Dura-Bright protection
- Anti-lock Braking-System
- Auxiliary 12 volt air compressor
- Computerized air Leveling system
- Electronic cruise control
- Engine batteries: Deep Cycle (3)
- Engine Block heater
- Front retrieval points
- Koni shock absorbers
- Power Steering
- Racor integrated fuel system with air & water purge
- Radiator coolant recovery system
- Rear axle ratio: 3.91: 1
- Suspension: Firestone air springs, 8 bag 100% air ride, outboard mounted
- Tires: Michelin 275/80R22.5 XZA-2
- Transmission oil cooler
- 200 amp alternator
- 200 amp battery isolator

## LIVABILITY

## LIVABILITY

- Air operated step-well cover with dual controls
- Aqua-Hot hydronic heating and hot water system
- Bedroom alarm clock
- Built-in safe
- Ceramic tile floor, kitchen, bath and D/P area
- China cabinet in kitchen
- Color-coordinated throw pillows, sofa and bed
- Concealed cabinet door hinges
- Designer kitchen facet with spray
- Designer window treatment with day/night shades
- Drinking water filter
- Air conditioning
- Fantastic Fan in bath
- Generator start/stop switch in bedroom
- Handcrafted walnut cabinetry
- Magazine rack and drink holder at co-pilot seat
- Pantry in kitchen
- Porcelain toilet
- Satin nickel and brass cabinet hardware
- Self under kitchen sink
- Corian counter tops, kitchen and bath
- Corian table with leaf
- Oak entry steps
- Corian 2-compartment kitchen sink
- Corian lavatory sink
- Corian nightstand tops
- Storage under entry step
- Telephone jack in living area and bedroom
- Villa sofa, leather
- Wardrobe dressing mirror
- Water pump switch in kitchen, bath and utility station
- 60'x80' queen bed

## **CONVENIENCE**

## **CONVENIENCE**

- Air-operated entry step
- Auxiliary rear brake lights and turn signals
- Carpeted storage bays
- Consolidated components bay
- Convenient utility station:
  - fresh water hose reel
  - 50 amp shoreline reel
  - hot & cold water faucet
  - soap dispenser
  - cable TV & phone connection
  - paper towel holder
  - 110v receptacle
  - water pump switch
- Docking lights (4)

- Door bell
- Drawer-1 in LP compartment
- Drawer-2 in large bay
- Dual halogen head lamps with turn signals
- TV antenna
- Fiberglass roof, one piece
- Fog lights
- Fuel fill two sides
- Patio awning
- Hadley air horns
- Joey bed
- Ladder
- Lighted entry door assist handle
- LP quick connect
- Manibloc plumbing system
- Mud flaps
- Painted exterior graphics with full body paint and double clear coat finish (no decals)
- Porch lights with touch switch
- Double Ramco mirrors, remote/heated
- Storage bay lights
- Trailer wiring
- TV outlet and 12v outlet in storage bay
- Zip Dee window awnings over all windows

## **SAFETY**

## **SAFETY**

- Carbon monoxide detector
- Ramco double-head remote-control & heated mirrors
- Docking lights (4)
- Emergency flasher lights
- Fire extinguishers (2)
- Fog lights
- High mounted additional brake light and turn signals
- Interior exit assist handle
- Lighted entry door assist handle
- LP leak detector
- Polarity meter/monitor 110v
- Smoke detector
- Step well cover, air operated

## **HEATING/COOLING/ELECTRICAL**

## **HEATING/COOLING**

- Aqua-hot hydronic heating and hot water
- Coach batteries 2 (8d gel type)
- Air conditioning: (2) Domestic 15,000 BTU roof a/c with heat strips

- Electrical surge suppression system
- Master battery disconnect switch
- 2000 watt inverter/charger
- 10.0 kw Power Tech diesel generator in quiet box
- 50 amp shoreline connection
- 28,000 BTU Automotive air conditioner
- 52000 BTU Automotive heater/defroster

## **COCKPIT FEATURES**

## **COCKPIT FEATURES**

- XM/AM/FM/Cassette radio with CD
- Antenna warning alarm
- Back-lit analogue dash gauges
- Battery boost switch
- Cell phone connection and dual band antenna
- Cruise control with dash indicator light
- Driver drink holder
- Driver Information Center in dash
- Generator start/stop switch
- Hand held CB radio with weather band
- Illuminated dash panel and shifter panel
- Map lights, pilot and co-pilot
- Slide-out snack tray
- Synchronized windshield wipers
- Tilt and telescoping steering wheel
- Touch pad transmission gear selector
- Villa leather 6 way power pilot seat
- Villa leather 6 way power co-pilot seat with electric footrest
- 12v. Accessory receptacle
- 8" tint top of windshield

## **APPLIANCES/ELECTRONICS/LIGHTING**

## **APPLIANCES/ELECTRONICS/LIGHTING**

- Living room audio/video
- Panasonic 20" TV monitor built into front overhead
- Sony digital AM/FM radio/video receiver
- Sony DVD/VCR
- Bose surround sound speakers
- Bedroom audio/video
- Panasonic 13" TV
- Accent lighting under counters and behind valances
- Domestic 18 cu .ft. Refrigerator/freezer
- TV antenna with signal booster
- Floor level accent lights
- Convection microwave oven

- Halogen accent lighting
- Reading lamps in bedroom
- Indirect ceiling lighting
- Inverter/Power monitor panel
- Recessed Gaggenau 2 burner cook top w/electronic ignition
- Washer/dryer

## 1995 U320

### Models & Codes

MODEL NO	WHEEL BASE	LENGTH	HEIGHT	WIDTH	INT HEIGHT	RETAIL
3600 U320	228"	36'	11'4"	102"	80"	
4000 U320	276"	40'	11'4"	102"	80"	

CODE	DESCRIPTION
CSGI	CURB SIDE GALLEY, ISLAND BED
WTBI	WALK THROUGH BATH, ISLAND BED
CAI	CENTER AISLE, ISLAND BED
SBID	SIDE BATH, ISLAND BED, DINETTE
SB	SIDE BATH
SBI	SIDE BATH, ISLAND BED

### WEIGHTS/RATINGS

### WEIGHTS/RATINGS

- Lengths: 36, 40'
- Exterior Height: 11'6"
- Interior Height: 80" at center
- Exterior Width: 102"
- Fresh water capacity: 102 gal.
- Gray water capacity: 110 gal.
- Waste water capacity: 54 gal.
- LP capacity: 270 lb.
- Fuel capacity: xxx gal.
- GVWR: xxx lbs.
- GCWR: xxx lbs.
- Wheelbase: 276" (40') / 228 (36')

### AUTOMOTIVE

### AUTOMOTIVE

- Foretravel Unihome Chassis
- Engine: Cummins M11 400 h.p.
- Transmission: Allison HD4060R 6 speed
- Air disc brakes- front and rear

- Anti-lock Braking-System
- Air hose for tire service
- Engine batteries: 2400 CCA Optima's
- Engine Block heater (110V)
- Halogen Headlamps
- One piece Alcoa aluminum wheels, (6)
- Power Steering
- Radiator coolant recovery system
- Rear axle ratio: 3.91: 1
- Remote Start Panel in Engine Compartment
- Suspension: 8 bag 100% air ride
- Tires: Michelin 275/80R22.5 PXZA
- Transmission oil cooler
- Transmission Retarder
- Wheelbase: 276" (40')
- Winn Fuel Filter System
- 190 amp alternator
- 190 amp battery isolator

## **LIVABILITY**

## **LIVABILITY**

- AM/FM/Cassette Stereo at dash
- AM/FM/Cassette Stereo in Bedroom
- Built in 20" Stereo TV in cockpit area
- Built in 13" Stereo TV and VCR in Bedroom
- Built in drink holders for Pilot and Co-pilot
- Built in Vacuum
- Bus Styling
- Carpeted overhead Cabinets
- Cedar lined Wardrobe
- China cabinet in kitchen
- China Toilet
- Corian Counter tops Kitchen and Bath
- Corian Lavatory Bowl
- Corian Table with Chairs
- Crowned Roof
- Digital Alarm Clock in bedroom
- Docking Light switch in Bedroom
- Dometic side by side Refrigerator/freezer with ice maker
- Drinking water filter
- Air conditioning
- Extra wide co-pilot seat
- Eye Level Microwave/Convection oven
- Flat floor thru out
- Floor Level Night light's
- Generator start/stop switch in Dash and bedroom
- Halogen and Fluorescent interior lighting
- Handcrafted cabinetry (walnut or oak)
- Magazine rack and drink holder at co-pilot seat



- Indirect lighting in bedroom
- Kool-O-matic exhaust fan in kitchen area
- Max Guard 29 Gel coat exterior finish
- Posi-temp shower valve
- Porch light with touch switch
- Power ceiling vent in bath area
- Power pilot and co-pilot seats
- Real wood paneling
- Slide out shelf under kitchen sink
- Sofa bed
- Recliner
- Trash compactor
- TV Antenna with power signal booster
- TV and 12v hook-up in Storage Compartment
- Wall mounted lamp in living area
- Washer/Dryer plumbing
- Wardrobe dressing mirror
- Water pump switch in kitchen and bath
- Window shadow boxes with day/night shades
- Wrap around dash with slide out snack tray
- 10 gal. 3-way water heater
- 40 channel CB radio
- 4 burner cook top stove with gas oven
- 60" x 80" queen bed

## **SAFETY**

## **SAFETY**

- Back up lights
- Carbon monoxide detector
- Entry door assist handle
- Halogen Fog lights
- LP leak detector
- Polarity meter in utility station
- Remote-control heated mirrors with wide angle vision
- Smoke detector
- Steel cage framing with aluminum roof frame
- 6" Tint top of windshield

## **HEATING/COOLING**

## **HEATING/COOLING**

- 17,200 BTU Automotive air conditioner
- 33,500 BTU Automotive heater/defroster
- (2) 13,500 BTU roof a/c with heat strips and wall mounted thermostat
- (2) Ducted furnaces with electronic ignition (16,000 and 35,000 BTU)

## CONVENIENCE

### CONVENIENCE

- Automatic air step well cover
- Antenna warning
- Audit 1860 rear view monitor with systems monitor and climate screen
- Air-operated entry step
- Auxiliary rear brake lights and turn signals
- Cellular phone antenna
- Computerized air leveling system with 12v compressor
- Convenient utility station:
  - hot and cold water
  - soap dispenser
  - paper towel holder
  - water pump switch
  - easy water and electrical hook-ups
  - easy access dump valves
  - cable TV & phone connection
  - 110v
- Door bell
- Dual Hadley air horns
- Exterior 110v outlet
- Fireproof document box
- Front entry door
- Fuel fill two sides
- Large engine access door
- Large pass-thru storage compartment
- Map lights for pilot and co-pilot
- Remote control spotlight
- Remote mounted generator radiator
- Roof rack and ladder
- Slide out tray in storage compartment
- Mud flaps
- Storage compartment lights
- Single motor synchronized windshield wipers
- (2) Telephone jacks
- Gray water capacity: 110 gal.
- Waste water capacity: 54 gal.
- Fresh water capacity: 102 gal.
- 2 gal. pre-charged water accumulator tank
- 80" interior height at center
- LP capacity: 270 lb.

## 1995 Grand Villa U300

### Models & Codes

MODEL NO	WHEEL BASE	RETAIL
Foretravel Grand Villa 3600	228"	\$328,500

MODEL NO		WHEEL BASE	RETAIL
Foretravel Grand Villa 4000		276"	\$343,000
CODE	DESCRIPTION		
SB	SIDE BATH, TWIN BEDS		
SBI	SIDE BATH, ISLAND BED		
SAI	SIDE AISLE, ISLAND BED		
SBID	SIDE BATH, ISLAND BED, DINETTE		
WTBI	WALK THRU BATH, ISLAND BED		

## WEIGHTS/RATINGS

## WEIGHTS/RATINGS

- Lengths: 36, 40'
- Exterior Height: 11'6"
- Interior Height: 80" at center
- Exterior Width: 102"
- Fresh water capacity: 102 gal.
- Gray water capacity: 110 gal.
- Waste water capacity: 54 gal.
- LP capacity: 270 lb.
- Fuel capacity: 148 gal.
- GVWR: 30,000 lbs.
- GCWR: xxx lbs.
- Wheelbase: 276" (40') / 228 (36')

## CHASSIS

## CHASSIS

- Foretravel Unihome Chassis: 30,000 GVWR
- Engine: Caterpillar 3176 350hp
- Transmission: Allison HD4060 6 speed
- Air disc brakes front and rear
- Air hose for tire service
- Anti-Lock brake system
- Engine batteries: 2400 CCA Optima
- Engine block heater (110v)
- Halogen headlamps
- Jake Brake
- One piece Alcoa\* aluminum Wheels (6)
- Power steering
- Racor fuel filter/water separator
- Radiator coolant recovery system
- Rear axle ratio: 3 91
- Remote Start panel in engine compartment
- Suspension: 8 bag 100% air ride
- Tires: Michelin 275/80R22.5 PXZA
- Transmission oil cooler

- Wheelbase: 228" (3600 models) / 276" (4000 models)
- 148 gal. fuel tank
- 190 amp alternator
- 190 amp battery isolator

## **LIVABILITY**

## **LIVABILITY**

- AM/FM/Cassette stereo in dash
- AM/FM/Cassette stereo in bedroom
- Built-in 20" stereo TV in dash
- Built-in 13" TV and VCR in bedroom
- Built-in drink holders for pilot & co-pilot
- Built-in vacuum cleaner
- Carpeted overhead cabinets
- Cedar-lined wardrobe
- China cabinet in kitchen (SBID & WTBI)
- China toilet
- Corian countertops kitchen and bath
- Corian lavatory bowl
- Corian table with chairs (In dinette models)
- Crowned roof
- Digital alarm clock in bedroom
- Docking light switch in bedroom
- Dometic refrigerator/freezer (Model varies by floor plan)
- Drinking water filter
- Eye-level microwave/convection oven
- Floor level night lights
- Generator switch in dash and bedroom
- Halogen & Fluorescent interior lighting
- Hand-crafted cabinetry (walnut or oak)
- Icemaker (Model varies by floor plan)
- Kool-o-matic exhaust fan in kitchen area
- MaxGuard 29 Gelcoat exterior finish
- Posi-Temp shower valve
- Porch light with touch switch
- Power ceiling vent in bath area
- Power pilot and co-pilot seats
- Real wood paneling (walnut or oak)
- Slide-out shell under kitchen sink
- Sofa bed
- Swivel chair and recliner
- Trash compactor (Some floor plans)
- TV antenna with power signal booster
- TV and 12v. hook-up in storage compartment
- Wall-mounted lamp in living area
- Washer/Dryer plumbing in 4000 Series
- Wardrobe dressing mirror
- Water pump switch in kitchen and bath
- Window shadow boxes with day/night shades

- Wrap around dash with slide-out snack tray
- 10 gal. 3-way water heater
- 40 Channel CB radio
- 4 Burner cooktop with gas oven
- 60" x 80" Queen size bed

## **ELECTRICAL**

## **ELECTRICAL**

- 110 volt automatic changeover switch
- 110 voltmeter and polarity meter
- 130 amp. converter/charger
- 50 amp shoreline
- 2500 watt Heart Interface, inverter
- 10 KW slide-out generator/diesel fuel
- Coach batteries (2) Gel type-816 reserve minutes
- Master battery disconnect switch
- trailer wiring

## **SAFETY**

## **SAFETY**

- Back up lights
- Carbon Monoxide detector
- Docking lights
- Entry door assist handles 2 sides
- Halogen fog lamps
- LP leak detector
- Polarity meter in utility station
- Remote controlled heated mirrors with wide-angle vision
- Smoke detector
- Steel cage framing with aluminum roof frame
- 6" Tint lop of windshield

## **HEATING/COOLING**

## **HEATING/COOLING**

- 17,250 BTU automotive A/C
- 35,000 BTU automotive heater/def
- (2) 13,500 BTU roof AC with heat strips and wall mounted thermostats
- (2) Ducted furnaces with electronic ignition (16,000 and 35,000 BTU)

## CONVENIENCE

### CONVENIENCE

- Antenna warning
- Audit I860 rear view monitor with systems monitor and climatic screen
- Automatic air-operated entry step
- Cellular phone antenna
- Computerized air leveling system with 12v compressor
- Convenient Utility Station:
  - hot & cold water,
  - soap dispenser,
  - paper towel holder,
  - water pump switch,
  - easy water & electrical hookup,
  - easy access dump valves,
  - cable TV & phone hook-up
- Doorbell
- Dual Hadley air horns
- Exterior 110v outlet
- Floor Safe
- Large engine access door
- Large Pass-thru storage compartments
- Map lights for pilot and co-pilot
- Remote control spotlight
- Roof rack and ladder
- Slide-Out tray in storage compartment
- Storage compartment lights
- Synchronized windshield wipers
- (2) Telephone jacks
- 110 gal. gray water capacity
- 54 gal. black water capacity
- 102 gal. fresh water tank capacity
- 2 gal pre-charged water accumulator tank
- 80" interior height at center
- 2701b. LP tank

## OPTIONS

### OPTIONS

- Convenience Package: \$1675.00
  - 100 lb. Freezer on slide out tray (\$950)
  - LP connection for Bar-B-Que (\$100)
  - Slide-out drawer in LP compartment (\$265)
  - Solar battery charger (\$545)
- Washer/Dryer Package: \$2070.00
  - Washer/Dryer (\$2000.00)
  - 6 gallon 3-way water heater (\$250.00)
- Blender: \$375.00

- Compact Disc Player/Changer: \$975.00
- Hot Water Heat (Exchange) Option Aqua-Hot Diesel,Electric and Motoraid System (available on ordered units only): \$5000.00
- Personalized entrance door lighted assist handle: \$45.00

## 1995 Grand Villa U280

### Models & Codes

MODEL NO	WHEEL BASE	RETAIL
Foretravel Grand Villa 3600	228"	\$286,500
Foretravel Grand Villa 4000	276"	\$310,000
CODE	DESCRIPTION	
SBI	SIDE BATH, ISLAND BED	
SAI	SIDE AISLE, ISLAND BED	
SBID	SIDE BATH, ISLAND BED, DINETTE	
WTBI	WALK THROUGH BATH, ISLAND BED	

### WEIGHTS/RATINGS

### WEIGHTS/RATINGS

- Lengths: 36, 40'
- Exterior Height: 11'6"
- Interior Height: 80" at center
- Exterior Width: 102"
- Fresh water capacity: 102 gal.
- Gray water capacity: 110 gal.
- Waste water capacity: 54 gal.
- LP capacity: 270 lb.
- Fuel capacity: 148 gal.
- GVWR: 28,000 lbs.
- GCWR: xxx lbs.
- Wheelbase: 276" (40') / 228 (36')

### CHASSIS

### CHASSIS

- Foretravel Unihome Chassis: 28,000 GVWR
- Engine: Cummins C8.3 300hp
- Transmission: Allison MD3060 6 speed
- Air disc brakes front and rear
- Anti-Lock brake system
- Air hose for tire service
- Engine batteries: 1600 CCA Optima
- Engine block heater (110v)



- Halogen headlamps
- One piece Alcoa\* aluminum Wheels (6)
- Power steering
- Racor fuel filter/water separator
- Radiator coolant recovery system
- Rear axle ratio: 5.13
- Remote Start panel in engine compartment
- Suspension: 8 bag 100% air ride
- Tires: Michelin 275/80R22.5 PXZA
- Transmission oil cooler
- Wheelbase: 228" (3600 models) 276" (4000 models)
- 148 gal. fuel tank
- 190 amp alternator
- 190 amp battery isolator

## **LIVABILITY**

## **LIVABILITY**

- AM/FM/Cassette stereo in dash
- AM/FM/Cassette stereo in bedroom
- Built-in 20" stereo TV in dash
- Built-in 13" TV and VCR in bedroom
- Built-in drink holders for pilot & co-pilot
- Built-in vacuum cleaner
- Carpeted overhead cabinets
- Cedar-lined wardrobe
- China cabinet in kitchen (SBID & WTBI)
- China toilet
- Corian countertops kitchen and bath
- Corian lavatory bowl
- Corian table with chairs (In dinette models)
- Crowned roof
- Digital alarm clock in bedroom
- Docking light switch in bedroom
- Dometic refrigerator/freezer (Model varies by floor plan)
- Drinking water filter
- Eye-level microwave/convection oven
- Floor level night lights
- Generator switch in dash and bedroom
- Halogen & Fluorescent interior lighting
- Hand-crafted cabinetry (walnut or oak)
- Icemaker (Model varies by floor plan)
- Kool-o-matic exhaust fan in kitchen area
- MaxGuard 29 Gelcoat exterior finish
- Posi-Temp shower valve
- Porch light with touch switch
- Power ceiling vent in bath area
- Power pilot and co-pilot seats
- Real wood paneling (walnut or oak)
- Slide-out shell under kitchen sink

- Sofa bed
- Swivel chair and recliner
- Trash compactor (Some floor plans)
- TV antenna with power signal booster
- TV and 12v. hook-up in storage compartment
- Wall-mounted lamp in living area
- Washer/Dryer plumbing in 4000 Series
- Wardrobe dressing mirror
- Water pump switch in kitchen and bath
- Window shadow boxes with day/night shades
- Wrap around dash with slide-out snack tray
- 10 gal. 3-way water heater
- 40 Channel CB radio
- 4 Burner cooktop with gas oven
- 60" x 80" Queen size bed

## **ELECTRICAL**

## **ELECTRICAL**

- 110 volt automatic changeover switch
- 110 voltmeter and polarity meter
- 50 amp shoreline
- 6.5 KW slide-out generator/LP fuel
- Coach batteries (2) Gel type-816 reserve minutes
- Master battery disconnect switch
- Trailer wiring

## **SAFETY**

## **SAFETY**

- Back up lights
- Carbon Monoxide detector
- Docking lights
- Entry door assist handles 2 sides
- Halogen fog lamps
- LP leak detector
- Polarity meter in utility station
- Remote controlled heated mirrors with wide-angle vision
- Smoke detector
- Steel cage framing with aluminum roof frame
- 6" Tint top of windshield

## **HEATING/COOLING**

## HEATING/COOLING

- 17,250 BTU automotive A/C
- 35,000 BTU automotive heater/def
- (2) 13,500 BTU roof AC with heat strips and wall mounted thermostats
- (2) Ducted furnaces with electronic ignition (16,000 and 35,000 BTU)

## CONVENIENCE

## CONVENIENCE

- Antenna warning
- Audit 1860 rear view monitor with systems monitor and climatic screen
- Automatic air-operated entry step
- Cellular phone antenna
- Computerized air leveling system with 12v compressor
- Convenient Utility Station:
  - hot & cold water,
  - soap dispenser,
  - paper towel holder,
  - water pump switch,
  - easy water & electrical hookup,
  - easy access dump valves,
  - cable TV & phone hook-up
- Doorbell
- Dual Hadley air horns
- Exterior 110v outlet
- Floor Safe
- Large engine access door
- Large Pass-thru storage compartments
- Map lights for pilot and co-pilot
- Remote control spotlight
- Roof rack and ladder
- Storage compartment lights
- Synchronized windshield wipers
- (2) Telephone jacks
- 110 gal. gray water capacity
- 54 gal. black water capacity
- 102 gal. fresh water tank capacity
- 2 gal pre-charged water accumulator tank
- 80" interior height at center
- 2701b. LP tank

## OPTIONS

## OPTIONS

- Advanced Electronics Package (U280 Only): \$5800.00
  - 2500 watt inverter system (includes extra battery) (\$2585)

- Slide out 10kw diesel generator (\$3850.00)
- Convenience Package: \$1675.00
  - 100 lb. Freezer on slide out tray (\$950)
  - LP connection for Bar-B-Que (\$100)
  - Slide-out drawer in LP compartment (\$265)
  - Solar battery charger (\$545)
- Washer/Dryer Package: \$2070.00
  - Washer/Dryer (\$2000.00)
  - 6 gallon 3-way water heater (\$250.00)
- Blender: \$375.00
- Compact Disc Player/Changer: \$975.00
- Hot Water Heat (Exchange) Option Aqua-Hot Diesel,Electric and Motoraid System (available on ordered units only): \$5000.00
- Personalized entrance door lighted assist handle: \$45.00

## 1995 Grand Villa U240

### Models & Codes

MODEL NO	WHEEL BASE	RETAIL
Grand Villa 3600 U240	228"	\$213,000
CODE	DESCRIPTION	
SBI	SIDE BATH, ISLAND BED	
SBID	SIDE BATH, ISLAND BED, DINETTE	
WTBI	WALK THROUGH BATH, ISLAND BED	

### WEIGHTS/RATINGS

### WEIGHTS/RATINGS

- Lengths: 36'
- Exterior Height: 11'6"
- Interior Height: 80" at center
- Exterior Width: 102"
- Fresh water capacity: 82 gal.
- Gray water capacity: 80 gal.
- Waste water capacity: 55 gal.
- LP capacity: 174 lb.
- Fuel capacity: 100 gal.
- GVWR: 24,000 lbs.
- GCWR: xxx lbs.
- Wheelbase: 228

### CHASSIS

### CHASSIS

- Foretravel Unihome Chassis: 24,000 GVWR

- Engine: Caterpillar 3116 250 h.p
- Transmission: Allison MD3060 6 speed with retarder
- Air brakes front and rear
- Air hose for tire service
- Engine batteries: 1600 CCA Optima
- Engine block heater (110v)
- Halogen headlamps
- One piece Alcoa\* aluminum Wheels (6)
- Racor fuel filter/water separator
- Radiator coolant recovery system
- Rear axle ratio: 5.29
- Remote Start panel in engine compartment
- Suspension: B.G. Goodrich Torsilastic Velvet Ride
- Tires: Michelin 9R22.5
- Transmission oil cooler
- Wheelbase: 228"
- 100 gal. fuel tank
- 190 amp alternator
- 190 amp battery isolator

## **LIVABILITY**

## **LIVABILITY**

- AM/FM/Cassette stereo in dash
- Built-in 13" TV in front overhead
- Built-in 13" TV and VCR in bedroom
- Built-in drink holders for pilot & co-pilot
- Built-in vacuum cleaner
- Carpeted overhead cabinets
- Cedar-lined wardrobe
- China cabinet in kitchen (SBID & WTBI)
- China toilet
- Corian countertops kitchen and bath
- Corian lavatory bowl
- Corian table with chairs (In dinette models)
- Crowned roof
- Digital alarm clock in bedroom
- Docking light switch in bedroom
- Dometic refrigerator/freezer (Model varies by floor plan)
- Drinking water filter
- Eye-level microwave/convection oven
- Floor level night lights
- Generator switch in dash and bedroom
- Halogen & Fluorescent interior lighting
- Hand-crafted cabinetry (walnut or oak)
- Icemaker (Model varies by floor plan)
- Kool-o-matic exhaust fan in kitchen area
- MaxGuard 29 Gelcoat exterior finish
- Posi-Temp shower valve
- Porch light with touch switch

- Power ceiling vent in bath area
- Power pilot and co-pilot seats
- Real wood paneling (walnut or oak)
- Slide-out shell under kitchen sink
- Sofa bed
- Swivel chair and recliner (except WTBI plan, 2 swivel chairs)
- Trash compactor (SBI floor plan)
- TV antenna with power signal booster
- Wall-mounted lamp in living area
- Wardrobe dressing mirror
- Water pump switch in kitchen and bath
- Window shadow boxes with day/night shades
- Wrap around dash with slide-out snack tray
- 10 gal. 3-way water heater
- 40 Channel CB radio
- 4 Burner cooktop with gas oven
- 60"x80" Queen size bed

## **ELECTRICAL**

## **ELECTRICAL**

- 110 volt automatic changeover switch
- 110 voltmeter and polarity meter
- 50 amp shoreline
- 6.5 KW slide-out generator/LP fuel
- 75 amp converter/charger
- Coach batteries (2) Gel type-408 reserve minutes
- Master battery disconnect switch
- Trailer wiring

## **SAFETY**

## **SAFETY**

- Back up lights
- Carbon Monoxide detector
- Docking lights
- Entry door assist handles 2 sides
- Halogen fog lamps
- LP leak detector
- Polarity meter in utility station
- Remote controlled heated mirrors with wide-angle vision
- Smoke detector
- Steel cage framing with aluminum roof frame
- 6" Tint top of windshield
- Triangle warning kit

## HEATING/COOLING

## HEATING/COOLING

- 17,250 BTU automotive A/C
- 35,000 BTU automotive heater/def
- (2) 13,500 BTU roof AC with heat strips and wall mounted thermostats
- (2) Ducted furnaces with electronic ignition (16,000 and 35,000 BTU)

## CONVENIENCE

## CONVENIENCE

- Antenna warning
- Audit 1860 rear view monitor with systems monitor and climatic screen
- Automatic entry step
- Cellular phone antenna
- Doorbell
- Dual Hadley air horns
- Exterior 110v outlet
- Floor Safe
- HWH automatic leveling system
- Large engine access door
- Large Pass-thru storage compartments
- Map lights for pilot and co-pilot
- Remote control spotlight
- Roof rack and ladder
- Storage compartment lights
- Synchronized windshield wipers
- (2) Telephone jacks
- 80 gal. gray water capacity
- 55 gal. black water capacity
- 82 gal. fresh water tank capacity
- 2 gal pre-charged water accumulator tank
- 174 lb. LP tank

From:

<https://wiki.foreforums.com/> - **Foretravel Wiki**

Permanent link:

[https://wiki.foreforums.com/through\\_the\\_years:specs:1995](https://wiki.foreforums.com/through_the_years:specs:1995)

Last update: **2025/09/11 12:18**

