

## Table of Contents

<b>2008 Foretravel Specifications</b> .....	3
<i><b>Brochures</b></i> .....	3
<i><b>Photos</b></i> .....	4
<b>Specifications</b> .....	5
<b>2008 Phenix / Nimbus</b> .....	5
WEIGHTS/RATINGS .....	6
CHASSIS .....	6
DASH & COCKPIT .....	7
EXTERIOR FEATURES .....	8
APPLIANCES/ELECTRONICS/LIGHTING/AUDIO VIDEO .....	9
LIVABILITY .....	10
SAFETY .....	11
HEATING/COOLING/ELECTRICAL .....	12



# 2008 Foretravel Specifications

Specifications, Brochures, Floor Plans & Photos: Phenix, Nimbus

- The PHENIX is Foretravel's luxury Bus, and has Cummins biggest 600 HP, ISX engine and Dana's IFS independent front suspension, available in 40', 42' and 45'.
- The NIMBUS is offered in three series:
  - XT Series: This is our non-tag Motorcoach that is available in 34', 36', 38' and 40', production series with carefully engineered floor plans. The XT series Motorcoach are powered by the Cummins 425 HP, ISL engine.
  - SE Series: Is our Special Edition 40' and 42' production coach with our specially designed floor plans that are equipped with Cummins 500 HP, ISM engine. The SE has a new front cap look and many other standard features not found on the XT series.
  - CE Series: The Foretravel's Custom Edition Series that comes with more standard features than the other series, and enables the customer to specify custom floor plans, request additional equipment, select from additional interior design materials, and personalize exterior graphics and paint colors. This series is available in 38', 40' and 42' lengths and also has the new front cap of the SE.

## Brochures



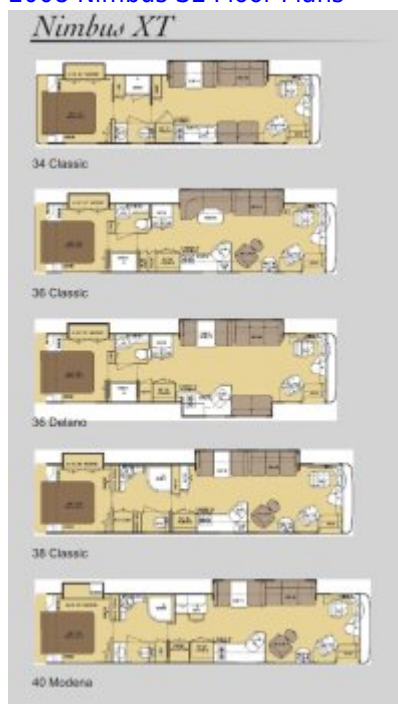
- 2008 was the last year Phenix shipped with a solid (non IFS) front axle. This was a transition year so you will find both.
- Nimbus line is expanded into the XT/SE/CE series of coaches.

2008 Full Line Brochure

2008 Specifications



2008 Nimbus SE Floor Plans



2008 Nimbus XT Floor Plans

## Photos



2008 Nimbus SE



2008 Nimbus XT



2008 Phenix

## Specifications

### 2008 Phenix / Nimbus

WEIGHTS/RATINGS

WEIGHTS/RATINGS

Phenix

- Fresh water capacity: 135 gal.
- Holding tank capacity: 145 gal.
- Fuel tank capacity: 200 gal.
- Overall Height: 12' 3" (to top of AC)
- Interior Height: x'
- Exterior Width 102"
- Wheelbase: xxx"
- Available Lengths: 40,42,45'
- GVWR: xxxlb.
- Front GAWR: xxxlb.
- Rear GAWR: xxxlb.
- Tag GAWR: 11,000 lb.
- GCWR: xxxlbs.

Nimbus

- Fresh water capacity: 95 gal. (36-38) / 135 gal. (40 & 42)
- Holding tank capacity: 145 gal.
- Fuel tank capacity: 120 gal. (36-38) / 150 gal. (40 & 42)
- LP tank capacity: 17 gal.
- Overall Height: 12' 3" (to top of AC)
- Interior Height: x'
- Exterior Width 102"
- Wheelbase: xxx"
- Available Lengths: 34,36,38,40 wo/tag, 40,42,45' w/tag
- GVWR: xxxlb.
- Front GAWR: xxxlb.
- Rear GAWR: xxxlb.
- Tag GAWR: xxxlb.
- GCWR: xxxlbs.

CHASSIS

CHASSIS

Nimbus XT 34*,36,38,40 (34 spc order)	Nimbus SE 40,42 -	Nimbus CE 38,40,42 -	Phenix 40,42,45 -	
S	S	S	S	ABS anti-lock braking system with automatic slack adjusters
S	S	S	S	Air disc brakes on all wheels
S	S	S	S	Air hose for tire service
S	S	S	S	Air quick connect in storage bay
S	S	S	S	Alcoa aluminum wheels with Dura-Bright protection

<b>Nimbus XT 34*,36,38,40 (34 spc order)</b>	<b>Nimbus SE 40,42 -</b>	<b>Nimbus CE 38,40,42 -</b>	<b>Phenix 40,42,45 -</b>	
S		S(38)		Allison gen. 4 transmission MH 3000R
	S(40&42)	S(40&42)	S	Allison gen. 4 transmission MH 4000R
S	S	S	S	Allison transmission retarder
S		S(38)		Alternator - 160-amp
	S(40&42)	S(40&42)		Alternator - 200-amp
			S	Alternator - 320-amp
S	S	S	S	Automatic traction control (ATC)
S	S	S	S	Auxiliary 12v air compressor
S	S	S	S	Chassis - TravelRide by Foretravel
S	S	S	S	all air ride with
S	S	S	S	4 outboard-mounted air springs (drive axle),
S	S	S		4 outboard-mounted air springs (straight front axle),
			S	2 air springs (IFS front axle),
	S(40&42)	S(40&42)	S	2 air springs (lifting tag axle)
S		S(38)		Engine - Cummins ISL 425 HP
	S(40&42)	S(40&42)		Engine - Cummins ISM 500 HP
			S	Engine - Cummins ISX 600 HP
S		S(38)	S	Fuel filter/water separator, Cummins
	S (40&42)	S (40&42)	S	Fuel system w/air & water purge
S	S	S		Front axle - straight beam
			S	Front axle - IFS (independent front suspension)
S	S	S	S	Front tow retrieval points
S	S	S	S	House batteries - 210 amp AGM each
S	S	S	S	HWH computerized air leveling system
S	S	S	S (not on IFS)	Koni FSD shock absorbers
S	S	S	S	Power steering
S	S	S	S	Radiator coolant recovery system
			S	Rear axle ratio: 4.30:1
	S(40&42)	S(40&42)	S	Rear axle ratio: 4.33:1
S		S(38)		Rear axle ratio: 4.78:1
S	S	S	S	Receiver hitch - 18,000 lb. rated
	S	S(40&42)	S	Remote battery jumper terminals
S	S	S	S	Suspension: Firestone air springs,
	S(40-42)	S(40-42)	S	Tag axle, lifting
S	S	S		Tires: 295/80R22.5
			S	Tires: 315/80R22.5
S	S	S	S	Transmission oil cooler

**DASH / COCKPIT****DASH & COCKPIT**

<b>Nimbus XT</b>	<b>Nimbus SE</b>	<b>Nimbus CE</b>	<b>Phenix</b>	
S	S	S	S	12 volt accessory receptacle

Nimbus XT	Nimbus SE	Nimbus CE	Phenix	
S	S	S	S	Battery boost switch
opt	opt	S	S	Camera, motorized back-up with control at dash
opt	S	S	S	Cameras, mirror mount with color back-up monitor
opt	S	S	S	CB at dash, hand held
S	S	S	S	Compass and outdoor temperature
S				Co-pilot seat, Villa leather 6 way power with footrest
opt	S	S	S	Co-pilot seat, Villa residential 6 way power w/footrest & headrest
S	S	S	S	Cruise control with dash indicator light
S	S	S	S	Dash AC controls for co-pilot
S	S	S	S	Driver and passenger drink holder
S	S	S	S	Entry flooring, hard surface
S	S	S	S	Gauges, backlit analogue
S	S	S	S	Generator auto start/stop
S	S	S	S	Generator start/stop switch
opt	S	S	S	GPS/AM/FM/CD in dash (sat. radio capable)
S	S	S	S	Illuminated dash panel
opt	opt	opt	opt	Monitor, passenger satellite/GPS
S	S	S	S	Map lights, pilot & copilot
S	S	S	S	Pedals, throttle & brake adjustable
S	S	S		Pilot seat, Villa leather 6-way power
			S	Pilot seat, Villa leather 6-way power with air ride
	opt	opt	opt	Silverleaf digital glass dash
opt	opt	opt	opt	Silverleaf VMS 400 (eng./trans. monitor)
S				Steering wheel, leather illuminated Smart wheel
S	S	S	S	Steering wheel, tilt and telescoping
opt	S	S	S	Steering wheel, wood look Smart wheel
S	S	S	S	Transmission gear selector, touch-pad
S	S	S	S	Windshield / privacy shade, electric
S	S	S	S	Windshield wipers, synchronized
S	S	S	S	Windshield, shade band at top

## EXTERIOR FEATURES

## EXTERIOR FEATURES

Nimbus-XT	Nimbus-SE	Nimbus-CE	Phenix	
S	S	S	S	Auxiliary rear brake lights and turn signals
opt	opt	opt	opt	Awning, Girard electric door
1	1	1	2	Awning, roof-mounted, automatic patio, Girard
opt (1-38/40)	S (3-40/42)	S (1-38, 3-40/42)	S	Awning, shells, Girard
opt	opt	opt	opt	Awnings, Girard electric window
opt	opt	opt	opt	Awnings, Zip Dee manual window
opt	1	1	1	Cargo tray, sliding
S	S	S	S	Carpeted storage bays
opt	opt	S	S	Chairs, folding patio



Nimbus-XT	Nimbus-SE	Nimbus-CE	Phenix	
opt	opt	opt	opt	Clear shield paint protection below windshield
S	S	S	S	Consolidated components bay
S	S	S		Docking lights, (4) with switch in dash
			S	Docking lights, (4) with switch in dash & bedroom
S	S	S	S	Dual halogen headlamps
S	S	S	S	Dual-pane tinted & insulated windows
S	S	S	S	Easy view one-piece windshield
S	S	S		Electric entry step
			S	Electric entry step (Executive)
opt	S	S	S	Electric utility reels
S	S	S	S	Fiberglass roof & sub floor (one-piece)
opt	S	S	S	Flush kit
S	S	S	S	Fog lights
opt	opt	opt	opt	Freezer, 100lb in storage bay
S	S	S	S	Fuel fill - on both sides of coach
S	S	S	S	Heated/remote triple head chrome mirrors w/LED turn signals
S	S	S	S	Hidden air horns
S	S	S	S	Lighted entry door with assist handle, keypad, & doorbell
opt	S	S	S	LP connection
S	S	S	S	Manibloc plumbing supply manifold
	S	S	S	Marker lights, LED
S	S	S	S	Mud flaps
S	S	S	S	Painted exterior, full body paint with clear coat finish
opt	S	S	S	Parallel storage doors
S	S	S	S	Porch light
S	S	S	S	PTL entry door with screen and kick guard
S	S	S	S	Remote storage door locks
S	S	S	S	Roof AC drains
		S	S	Stainless steel lined utility bay
S	S	S	S	Storage bay lights
S	S	S	S	Trailer wiring
opt	S	S	S	TV antenna - electric with booster
S				TV antenna with booster
S	S	S	S	TV outlet and 12v outlet in storage bay
S	S	S	S	Utility station: Fresh water connection, 50 amp shoreline connection, hot and cold water faucet, soap dispenser, cable TV, phone connection, paper towel holder, water pump switch, water fill switch, 120v receptacle
	opt	S	S	Xenon low beam headlights

## APPLIANCES/ELECTRONICS/LIGHTING/AUDIO VIDEO

## APPLIANCES/ELECTRONICS/LIGHTING/AUDIO VIDEO

Nimbus XT	Nimbus SE	Nimbus CE	Phenix	
opt	opt	opt	S	Alarm Clock, built in

Nimbus XT	Nimbus SE	Nimbus CE	Phenix	
opt	opt	opt	opt	Battery charger, solar
opt	opt	opt	opt	Cellular antenna, digital
S	S	S	S	Component audio and digital video cables
opt	opt	opt	S	Cook top, 2-burner electric
S	S	S	opt	Cook top, 2-burner LP w/electronic ignition, recessed
	opt	opt	opt	Elan Via 2 remote
S	S	S	S	Home theater system in LR w/ Anthony Gallo Speakers
S	S	S	S	Inverter/power monitor panel in living room area
opt	S	S	S(+ valances)	Lighting, accent under counters, floor lights
S	S	S	S	Lighting, Halogen reading lamps in bedroom
opt	opt	S	S	Microwave, GE Advantium
S	S			Microwave/convection oven
opt	opt	opt	opt	MX3000 Universal remote
2	2	2		MX850 Universal remote
	opt	opt	2	MX950 Universal remote
	opt	opt	S	Refrigerator, 120v electric w/ice & water in door
S	S	S	opt (14 cu ft)	Refrigerator, Dometic side-by-side 12 cu. ft
opt	opt	opt	S(XM)	Satellite radio, XM or Sirius (requires subscription)
opt	opt	opt	opt	Satellite system, 2nd HD receiver
opt	opt	opt	S	Satellite system, in motion w/HD DVR receiver
opt	opt	opt		Satellite system, in motion w/HD receiver
			S	Siverleaf Total Coach monitor
S				TV 20" LCD in bedroom
	S	S		TV 23" LCD w/DVD in bedroom
			S	TV 26" LCD in bedroom
S				TV 32" LCD in living room
opt	S	S	S	TV 37" LCD in living room
	opt(FD)	opt(FD)	opt(FD)	TV 42" LCD in living room
opt	S	S	S	TV antenna - electric with booster
S				TV antenna with booster
S	S	S	S	Washer/dryer connections

**LIVABILITY****LIVABILITY**

Nimbus XT	Nimbus SE	Nimbus CE	Phenix	
S	S	S	S	Powered step-well cover with two switch locations
S	S	S	S	Brushed nickel cabinet hardware
opt	opt	opt	opt	Calap-Z-Table
S	S	S	S	China toilet
S	S	S	S	Color-coordinated throw pillows (sofa & bed)
S	S	S	S	Concealed door hinges
S	S	S	S	Designer kitchen faucet with pullout sprayer
S	S	S		Designer window treatment with day/night shades
	opt	opt	S	Designer window treatment with electric shades

Nimbus XT	Nimbus SE	Nimbus CE	Phenix	
panel-frame	raised panel	RP (40-42)panel frame 38	raised panel	Doors, interior
S	S	S	S	Electric Fantastic fan in bath & toilet room w/auto rain sensor
S	S	S	S	Filter, drinking water & ice maker water
S	S	S	S	Floor-to-ceiling wallpaper and chair rail
	opt	opt	opt	Floor Heat, electric (with approved flooring)
S	S	S	S	Kitchen pantry
S	S	S	S	Lighting, Intellitec multiplex system
S	S	S	S	Magazine rack and drink holder at co-pilot seat
S	S	S	S	Queen bed (60" x 77") (66" x 77" floorplan dependent)
S(FD)	S(FD)	S(FD)	S(FD)	Recliner
opt	opt	opt	opt	Shower foot rest
S	S	S	S	Showerhead slider
			S	Sink, vessel lavatory sink
S	S	S	S	Skylight above shower
S	S	S	S	Slide-out rooms, flush with sidewalls when retracted
S	S	S	S	Slide-out rooms, pneumatic sealed
S	S	S	S (Silestone)	Solid surface countertops (kitchen and bath)
S	S	S	S (Silestone)	Solid surface desktop (floorplan dependent)
S	S	S	S (Silestone)	Solid surface dinette table
	S	S	S (Silestone)	Solid surface nightstand tops
S				Solid wood bedroom countertops
S	S	S	S	Stainless steel kitchen sink w/covers
S	S	S	S	Storage under entry step
S	S	S	S	Telephone jack in living area and bedroom
S	S	S	S	Tip-out storage below kitchen sink
	S (40-42)	S (40-42)	S	Tile floor (kit, bath, D & P area)
S		S (38)		Resilient ceramic tile (vinyl) (bath, D & P area)
opt	opt	opt	opt	Vacuum, built in
opt	opt	opt	opt	Washer dryer combination
	opt (FD)	opt (FD)	opt (FD)	Washer dryer, stacked
			opt	Wood, exotic
S	S		S	Wood, handcrafted cherry, walnut or maple cabinetry
		opt	opt	Wood, mahogany cabs.

## SAFETY

## SAFETY

Nimbus XT	Nimbus SE	Nimbus CE	Phenix	
S	S	S	S	All coaches built to RVIA specifications
S	S	S	S	Carbon monoxide detector
S	S	S	S	Daytime running lights
S	S	S	S	Drive and passenger 3-point seat belts & shoulder harnesses
S	S	S	S	Emergency flasher lights
S	S	S	S	Fire extinguishers (2)

Nimbus XT	Nimbus SE	Nimbus CE	Phenix	
S	S	S	S	GFI protected circuits
S	S	S	S	High-mounted additional brake lights
S	S	S	S	Interior exit-assist handle
S	S	S	S	Lighted entry-door assist handle
S	S	S	opt	LP leak detector
S	S	S	S	Polarity meter/monitor - 120v
opt	opt	opt	S	Safe
opt	opt	opt	S	Security system
S	S	S	S	Smoke detector

**HEATING/COOLING/ELECTRICAL****HEATING/COOLING/ELECTRICAL**

Nimbus XT	Nimbus SE	Nimbus CE	Phenix	
S	S(38-40)	S(38)		10kw diesel generator in quiet box
S	S	S	S	12 volt battery disconnect
	opt (40) std (42)	opt (40) std (42)	S	12.5kw diesel generator in quiet box
S	S	S		2000 w inverter/charger
	opt	opt	S	3000 w inverter/charger
S	S	S	S	50 amp shoreline connection
S	S	S	S	Air conditioning and heating with hidden returns
S	S(40)	S(38-40)	S(40)	Air conditioning, ducted with 2 roof airs
	S(42)	S(42)	S(42)	Air conditioning, ducted with 3 roof airs
			S(45)	Air-conditioning, ducted with 4 roof airs
S	S	S	S w/o reset	Auto temp. start for generator w/safety reset
S	S	S	S	Electrical surge-suppression system
S	S	S	S	Heat pumps on roof AC's
S				Hydronic heating with galvanized steel housing
	S	S	S	Hydronic heating with stainless steel housing
S	S	S	S	Low-battery generator auto-start

From:

<https://wiki.foreforums.com/> - Foretravel Wiki

Permanent link:

[https://wiki.foreforums.com/through\\_the\\_years:specs:2008](https://wiki.foreforums.com/through_the_years:specs:2008)Last update: **2024/07/29 17:32**